

# Monkfish Specifications

FYs 2020-2022

Fiona Hogan, NEFMC

Jason Didden, MAFMC



New England  
Fishery Management Council



MID-ATLANTIC FISHERY  
MANAGEMENT  
COUNCIL

# Summary

---

- ▶ NEFMC supported a 10% increase in the acceptable biological catch (ABC) for the northern area and a status quo southern area ABC.
  - ▶ Survey-based multiplier
- ▶ Larger discard set-aside in southern area, lower TAL
- ▶ no changes to effort controls, possession limits, and day-at-sea (DAS) allocations



**NFMA ACL = ABC**

**8,351 mt**



Management Uncertainty (-3%)

**ACT = 97% of ACL**

**8,101 mt**



Discards (-18.2%)

**TAL = ACT - Discards**

**6,624 mt**

ABC = Acceptable Biological Catch  
ACL = Annual Catch Limit

**SFMA ACL = ABC**

**12,316 mt**



Management Uncertainty (-3%)

**ACT = 97% of ACL**

**11,947 mt**



Discards (-50.8%)

**TAL = ACT - Discards**

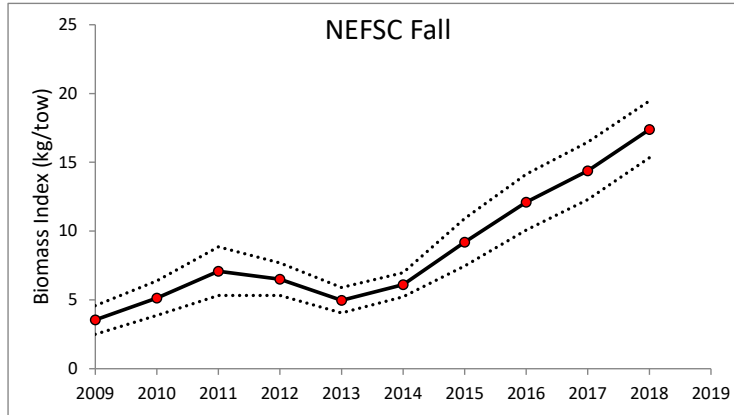
**5,882 mt**

ACT = Annual Catch Target  
TAL = Total Allowable Landings

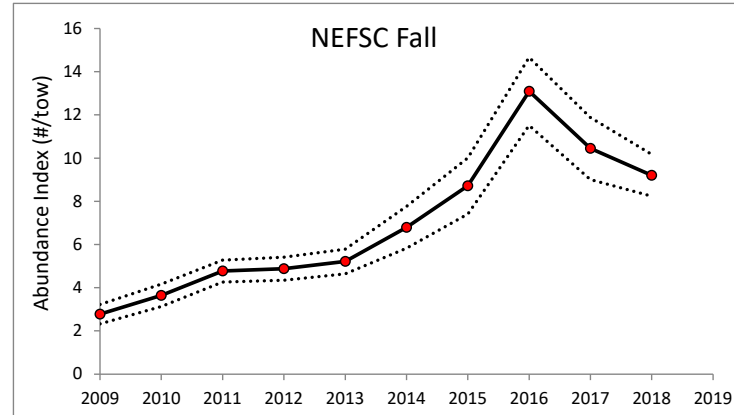


# Northern survey indices

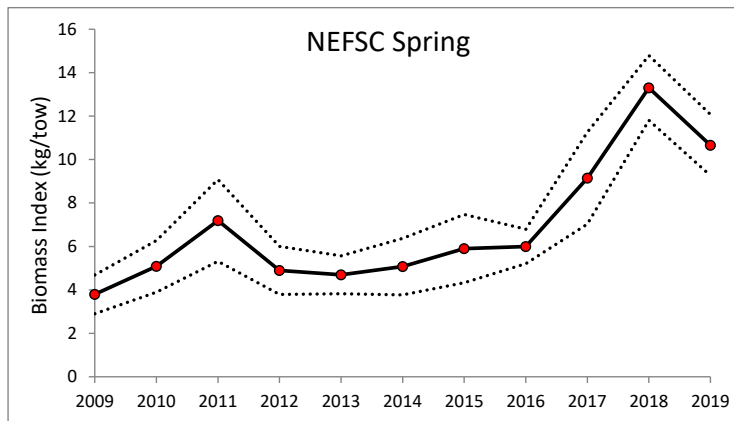
Biomass



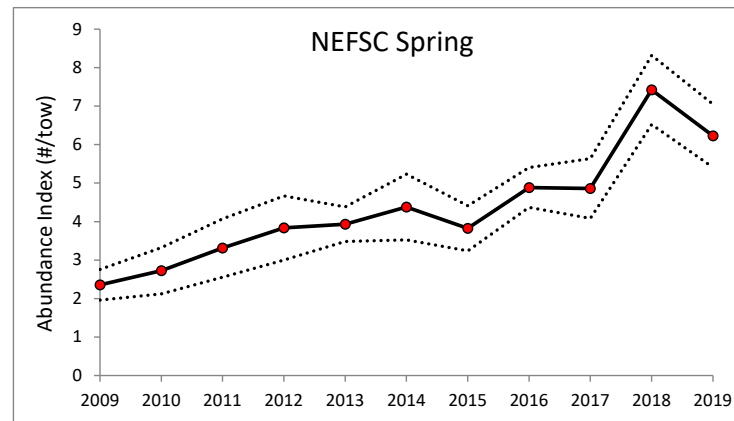
Abundance



NEFSC Spring

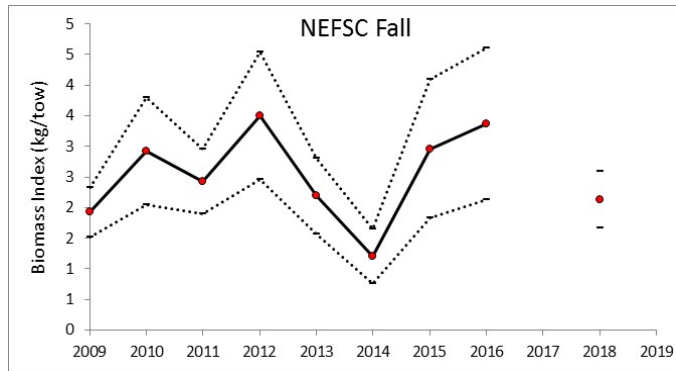


NEFSC Spring

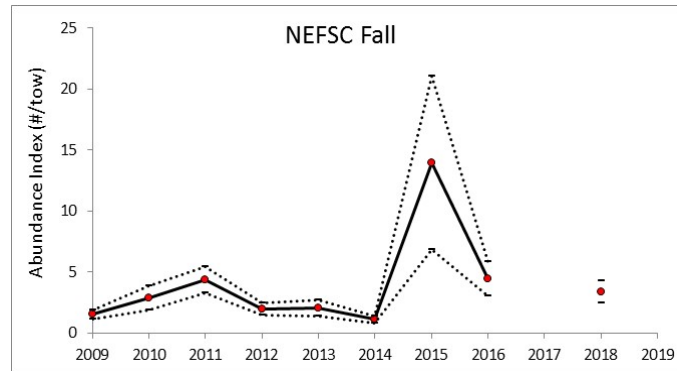


# Southern survey indices

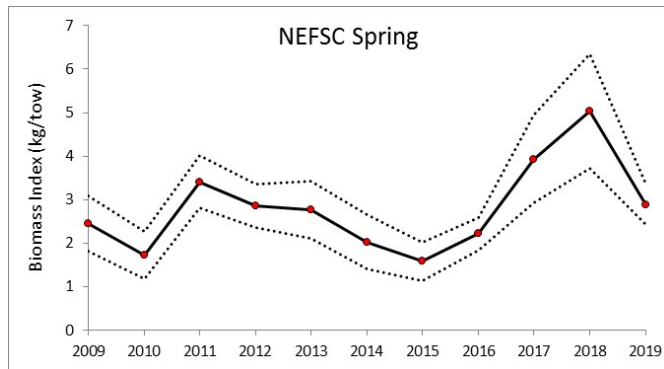
Biomass



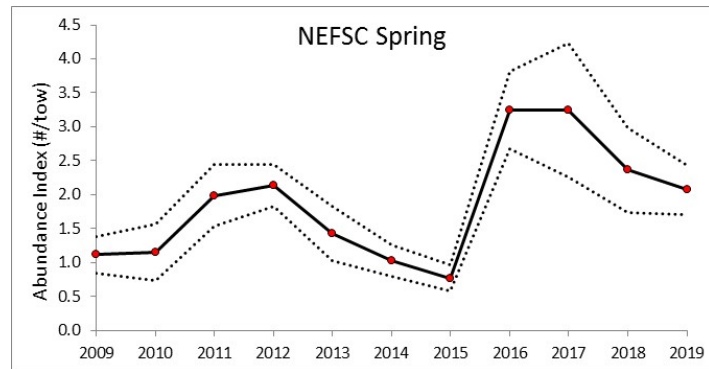
Abundance



NEFSC Spring

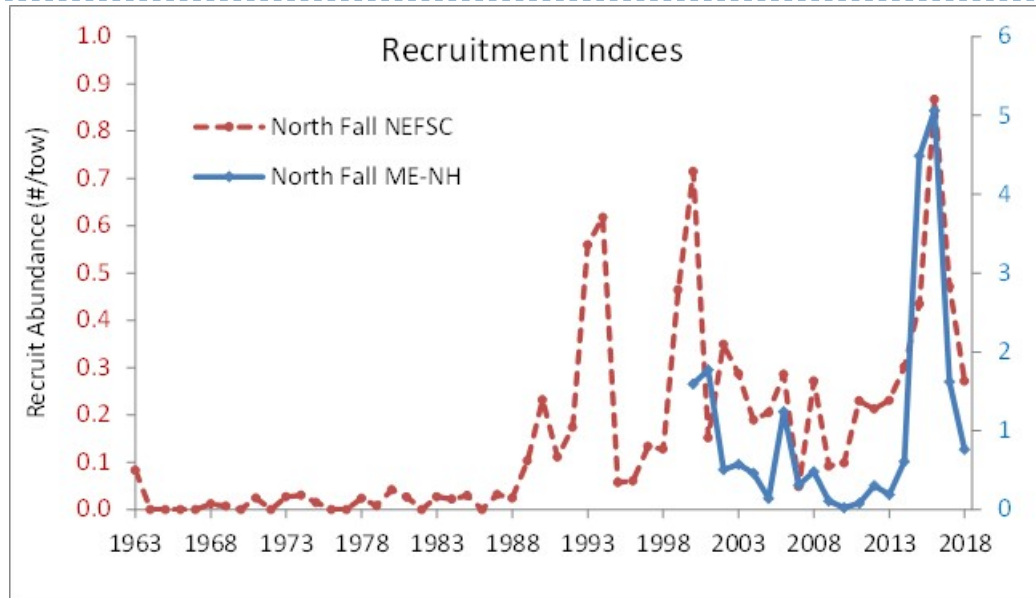


NEFSC Spring

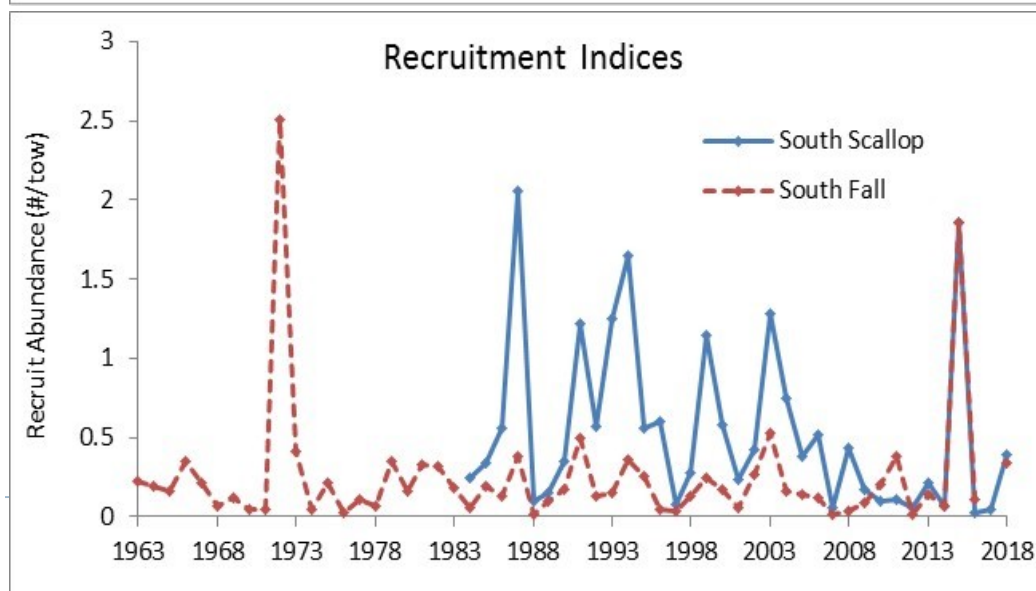


# Recruitment

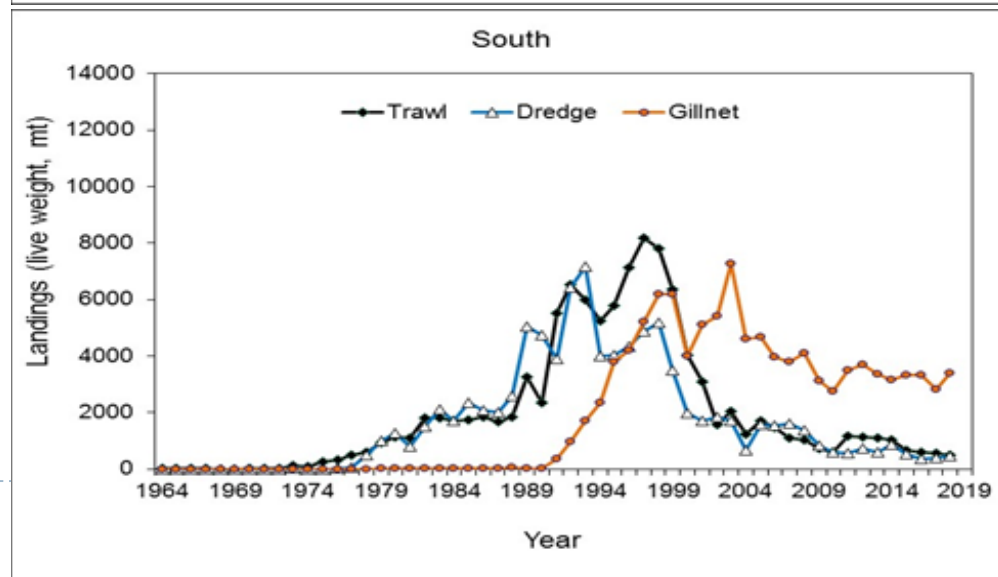
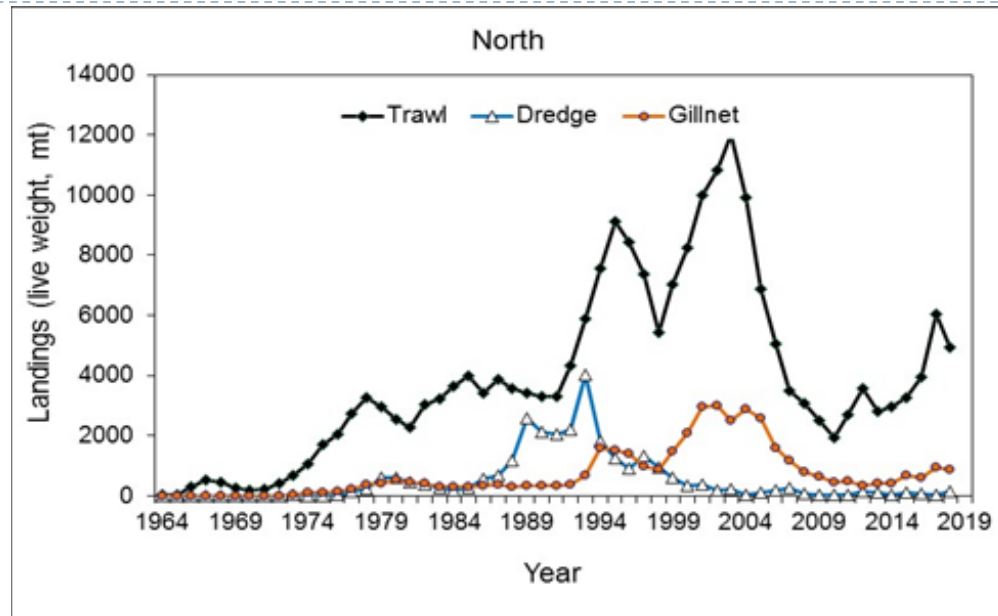
North



South



# Landings



# Market

RELATED CATEGORIES: Food & Beverage

SORT BY: Relevancy

FILTER RESULTS BY: Supplier Types Supplier Location Min. Order: less than Ready to Ship

Certification Part Shape Style Freezing Process

Home Food & Beverage monkfish whole monkfish 225 products found for whole monkfish



Hot selling seafood frozen monkfish cut with flour

1 Kilogram (Min. Order)

15 YRS Xiamen East Ocean Fishery...

67.6%

Contact Supplier



Competitive price and superior quality frozen whole round monkfish

US \$3000-4000 / Metric Ton  
10 Metric Tons (Min. Order)

9 YRS Dandong Huayi Foodstuff Co...

64.3%

Contact Supplier



China made Frozen Monkfish whole round

US \$1000-5000 / Ton  
8 Tons (Min. Order)

7 YRS Rongcheng South Light Food...

Verified 62.8%

Contact Supplier



Sea food fish frozen monkfish whole round from china supplier

US \$1000-6000 / Ton  
10 Tons (Min. Order)

2 YRS Zhoushan Haiwang Seafood...

59.0%

Contact Supplier

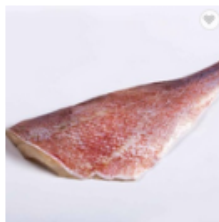


Whole round frozen monkfish (Lophius litulon)

US \$800-950 / Metric Ton  
25 Metric Tons (Min. Order)

4 YRS Xiamen Tongzhonghe Imp &...

Contact Supplier



Competitive price and superior quality frozen whole round monkfish

US \$20-25 / Kilogram  
30 Kilograms (Min. Order)

3 YRS GREEN FARM SOUTHEAST E...

Contact Supplier



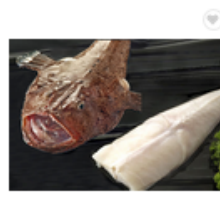
Frozen whole round gutted monkfish

US \$2.5-4.1 / Kilogram  
10 Kilograms (Min. Order)

7 YRS Shandong Kingsun Foods Co...

77.2%

Contact Supplier

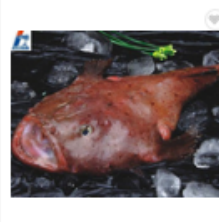


Whole Round Frozen Monkfish Prices

US \$800-900 / Ton  
27 Tons (Min. Order)

10 YRS Taizhou Huatong Aquatic P...

Contact Supplier

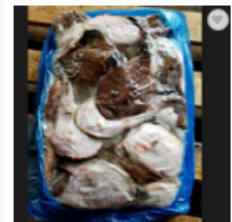


Hot sale frozen lophius litulon WR monkfish with great price

US \$900-2000 / Ton  
10 Tons (Min. Order)

2 YRS Taizhou Hongye Foods Co., L...

Contact Supplier



monkfish

US \$830.0-850.0 / Metric Tons  
27 Metric Tons (Min. Order)

7 YRS E & K CO., LTD

42.9%

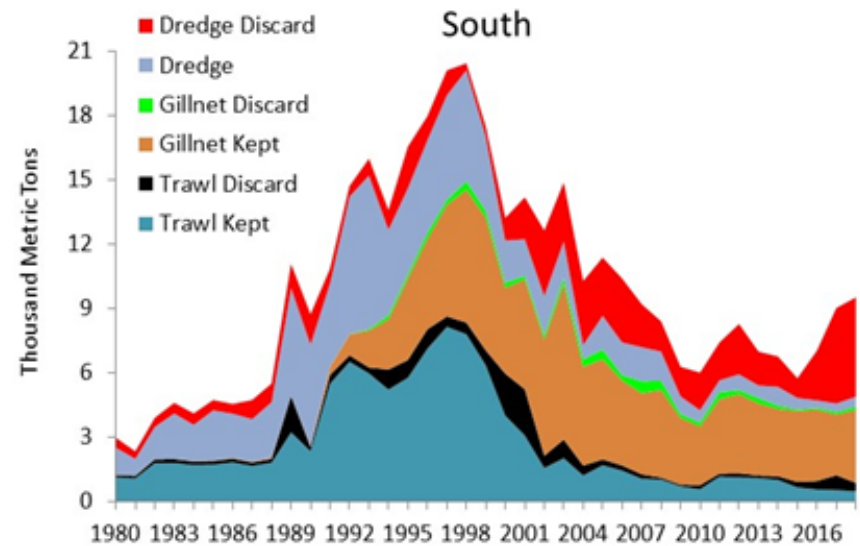
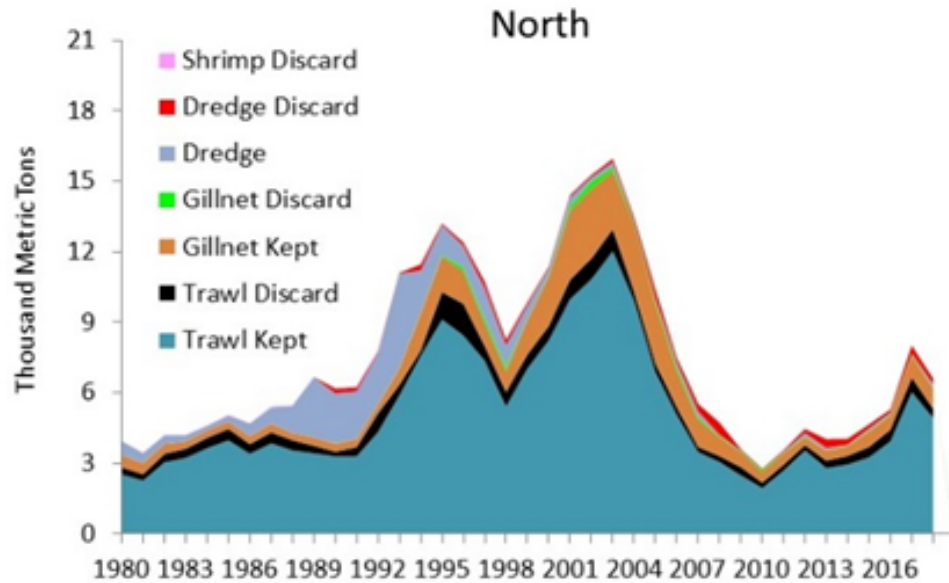
Contact Supplier





# Discards

---



# NE Motions

---

- ▶ that the Council approve Alternative 3 to revise SFMA monkfish specifications for FY2020-FY2022 only and select as preferred.
- ▶ that the Council support the recommendation of Alternative 2 (revised monkfish specifications) for FY 2020-FY2022 only for the NFMA as preferred.



# Possible M-A Motion

---

- ▶ I move that the Council approve the same FY2020-FY2022 monkfish specifications as the New England Council, Alternatives 2 and 3 in the October 2019 briefing materials.
- ▶ Nolan/Heins



# Extra Slides

---



# 2019 Operational Assessment

---

- ▶ **Assessment - still survey based**
  - ▶ 2010 assessment – SCALE model
  - ▶ 2013 operational assessment – SCALE model
  - ▶ 2016 operational assessment – survey indices
  - ▶ 2019 operational assessment – survey indices
  
- ▶ **NEFSC working on age-based assessment**



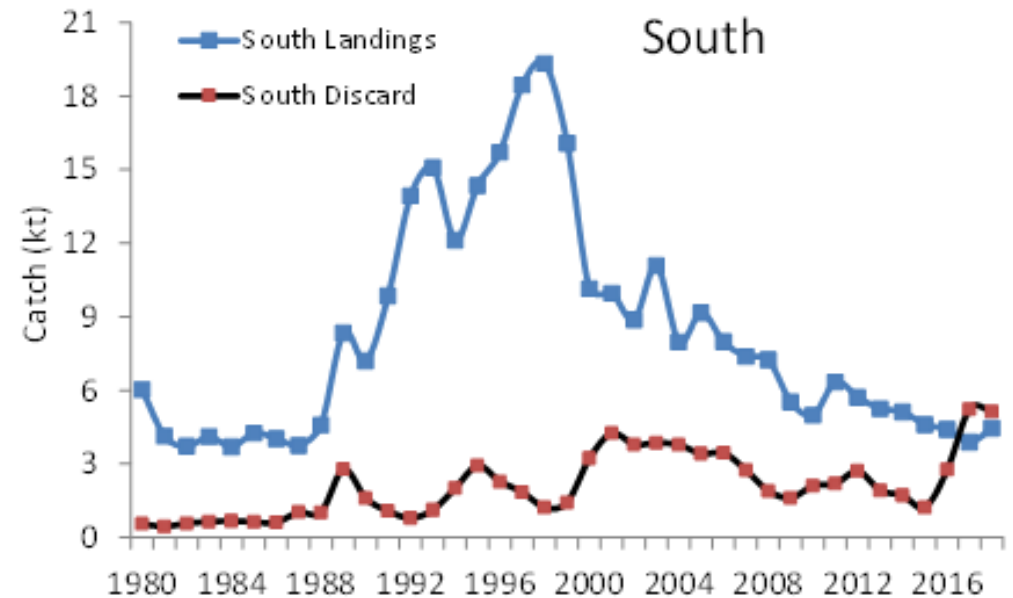
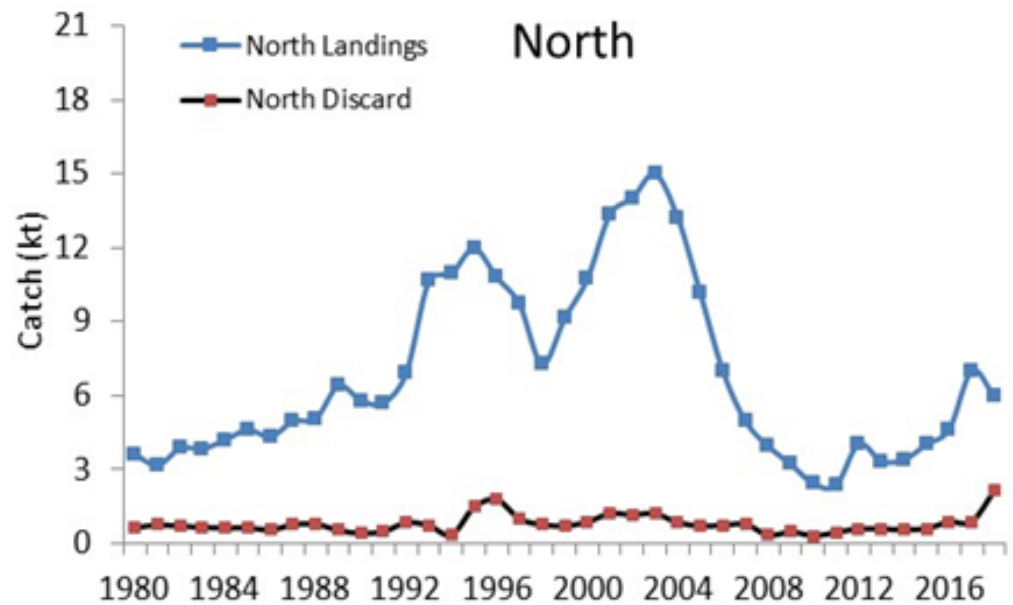
# Discards

Discards have increased

Calculated using  $D/(D+K)$   
2016 – 2018

NFMA discard: 18%

SFMA discard: 51%

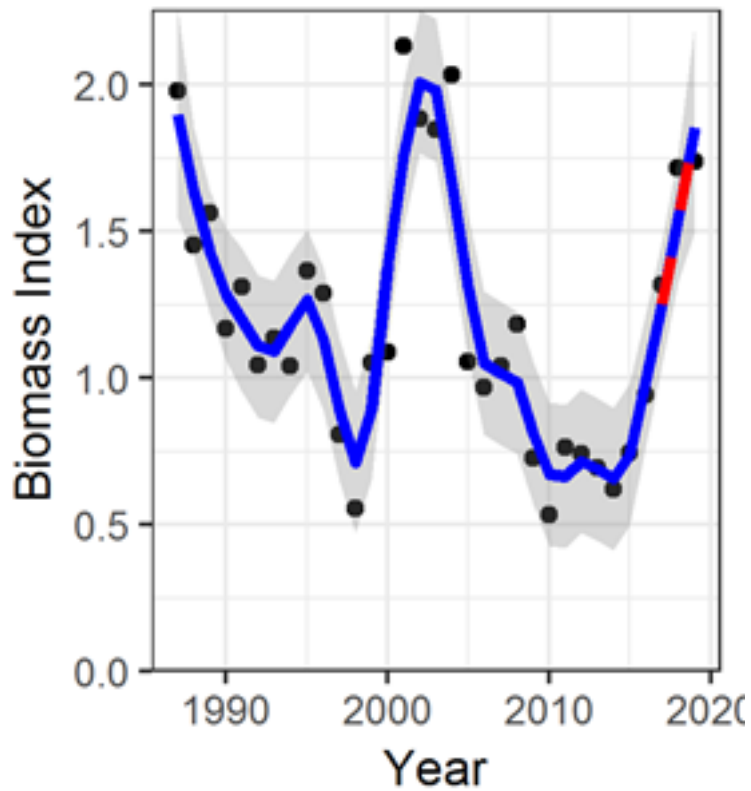


# Northern multiplier

---

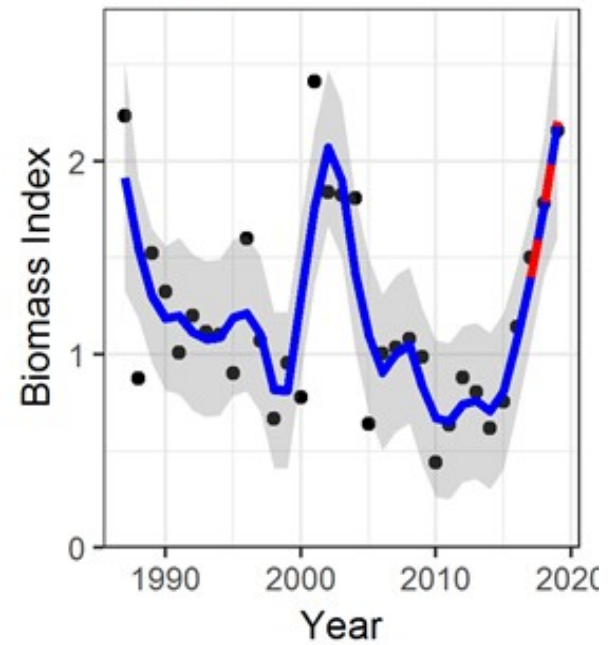
## Monkfish N Spr+Fall

Multiplier = 1.218

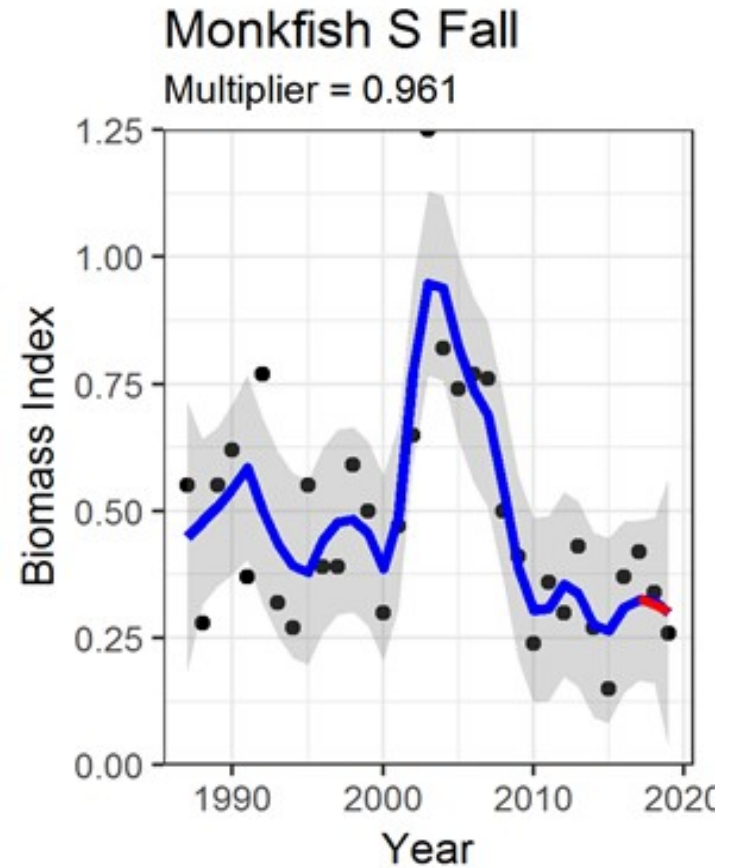
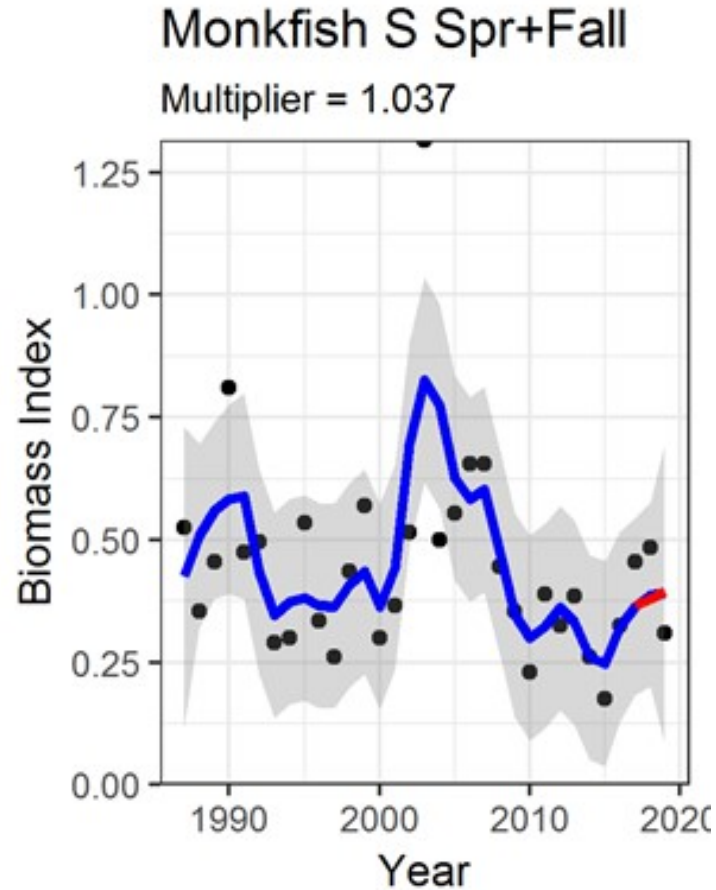


## Monkfish North Fall

Multiplier = 1.255



# Southern multiplier





# Specifications for FYs 2020-2022

---

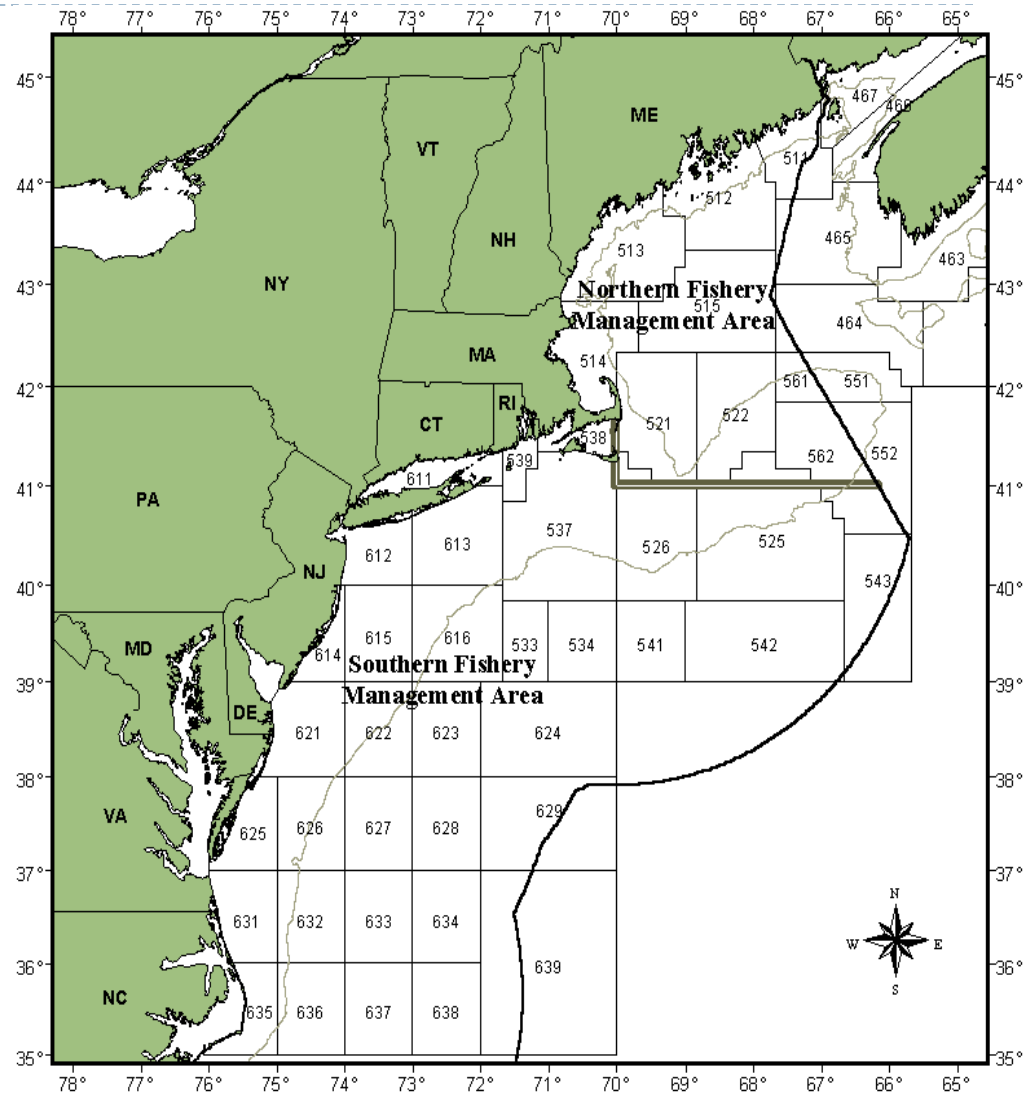
- ▶ **Revised Annual Catch Limits**
  - ▶ Alternative 2: Sets specs and updates discard rate in the NFMA
  - ▶ Alternative 3: Sets specs and updates discard rate in the SFMA
- ▶ **No changes to effort controls proposed by the PDT**



# Status Quo Specifications

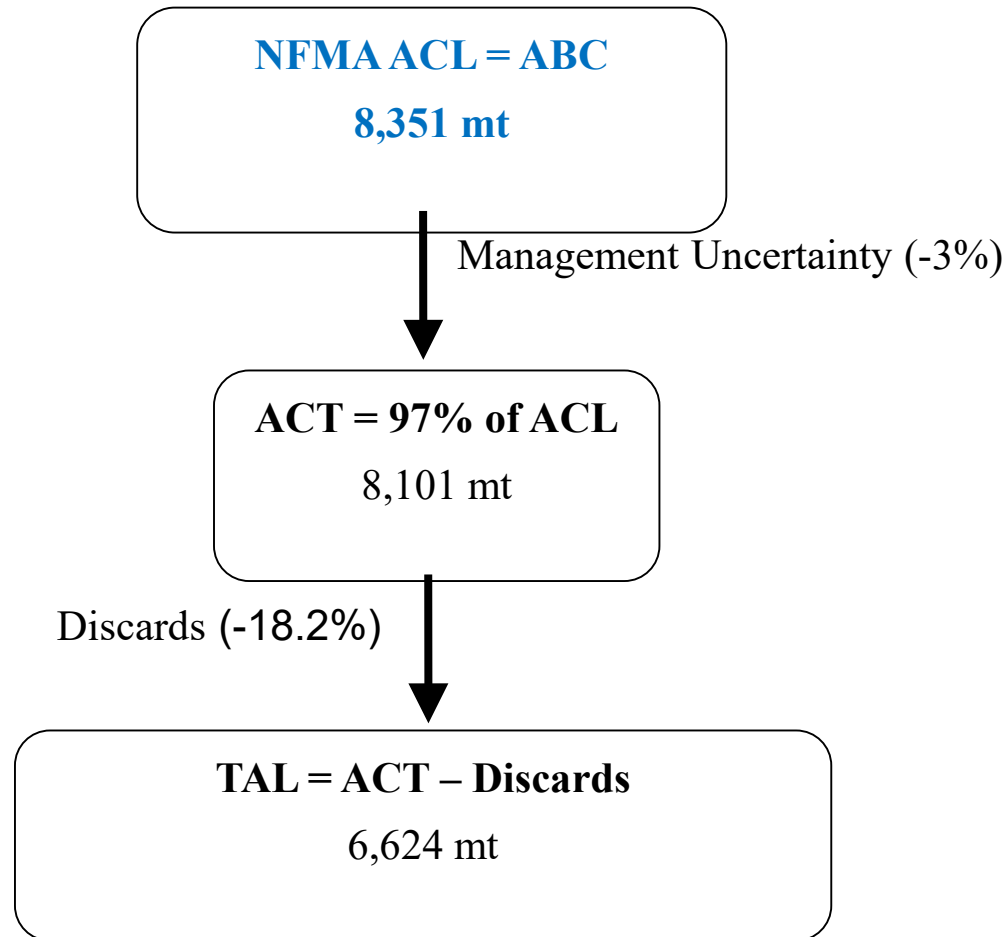
## ► Specifications

- NFMA OFL = 17,805 mt
- NFMA ABC = 7,592 mt
- SFMA OFL = 23,204 mt
- SFMA ABC = 12,316 mt



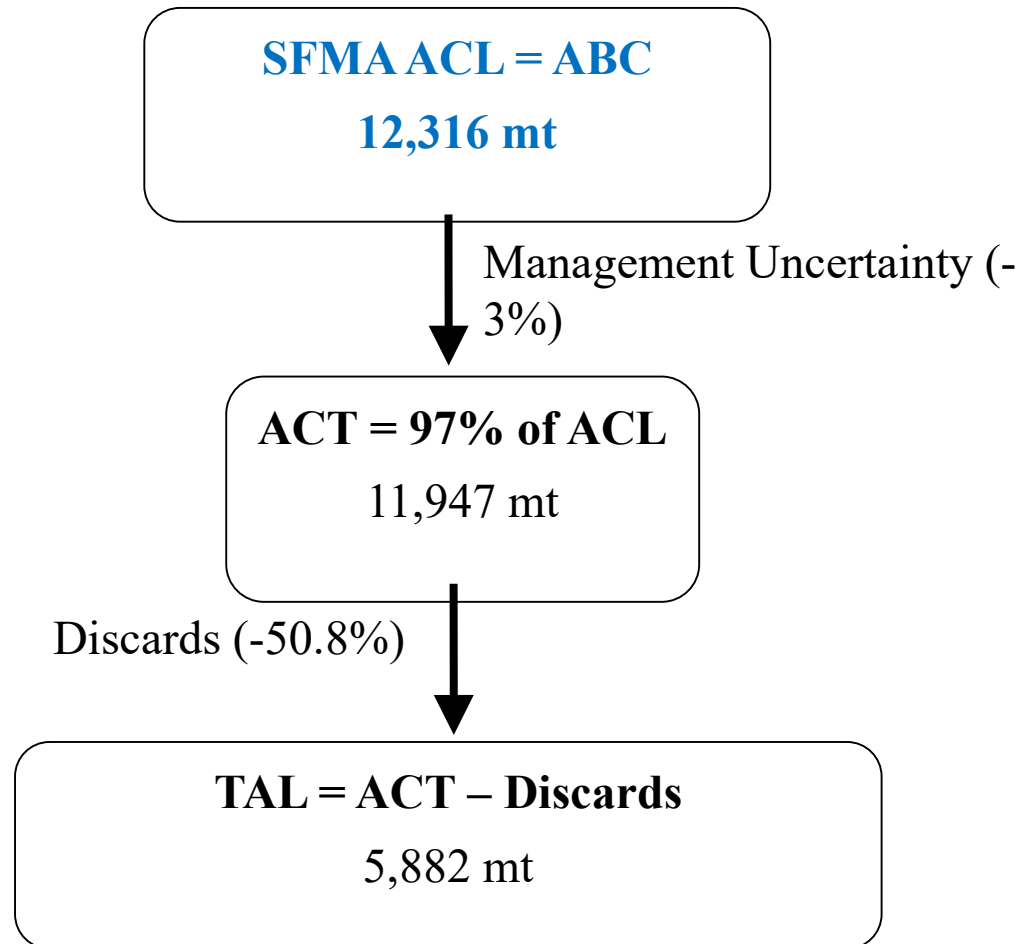
# Revised Specifications - NFMA

---



# Revised Specifications - SFMA

---



# Alternative approaches -NFMA

---

	<b>ABC</b>	<b>ACT</b>	<b>TAL</b>	<b>Estimated Discards</b>	<b>% Difference in TAL from status quo</b>
<b>Status quo</b>	7,592	7,364	6,338	1,026	0%
<b>Plan B adjustment factor (20%)</b>	9,110	8,837	7,226	1,610	13%
<b>PDT recommended adjustment factor (10%)</b>	8,351	8,101	6,624	1,477	4.4%



# Alternative approaches - SFMA

---

	<b>ABC</b>	<b>ACT</b>	<b>TAL</b>	<b>Estimated Discards</b>	<b>% Difference in TAL from status quo</b>
<b>Status quo</b>	12,316	11,947	9,011	2,936	0%
<b>PDT recommendation</b>	12,316	11,947	5,882	6,064	-42%

# NFMA – recent fishery performance

---

<b>NMFA</b>			
<b>Fishing Year</b>	<b>Landings (mt)</b>	<b>TAL (mt)</b>	<b>Percent of TAL achieved</b>
<b>2014</b>	3,403	5,854	58
<b>2015</b>	4,080	5,854	70
<b>2016</b>	5,447	5,854	93
<b>2017</b>	6,807	6,338	107
<b>2018</b>	6,168	6,338	97



# SFMA – recent fishery performance

---

<b>SMFA</b>			
<b>Fishing Year</b>	<b>Landings (mt)</b>	<b>TAL (mt)</b>	<b>Percent of TAL achieved</b>
<b>2014</b>	5,415	8,925	61
<b>2015</b>	4,733	8,825	53
<b>2016</b>	4,345	8,925	49
<b>2017</b>	3,802	9,011	42
<b>2018</b>	4,600	9,011	51





# Impacts

---

	Habitat Impacts	Allocated Target Species	Non-allocated Target Species and Bycatch	Endangered/Protected Species	Human Community Impacts
ACL	Neutral	Neutral	Neutral	Low negative to neutral	Neutral to low positive
Effort Controls: NFMA	Neutral	Neutral to low positive	Neutral	Low negative	Neutral to low positive
Effort Controls: SFMA	Neutral	Neutral to low positive	Neutral	Low negative	Low positive to positive

