



# Black Sea Bass Commercial Allocation Amendment



MAFMC Meeting

April 7, 2020

Webinar

# Today's objective

Approve scoping plan and scoping document.



# Scoping plan

- One webinar scoping hearing & written comment period.
  - Multiple scoping hearings not needed
    - Many potential alternatives partially developed
    - Action discussed at many public meetings
- Objective: allow one additional formal public comment opportunity before the range of alternatives is finalized.
- Potential dates: mid-May hearing, comment period through end of May.

# Scoping document outline

- 1) Introduction
- 2) What are the current state allocations and how were they developed?
- 3) Why are the MAFMC and ASMFC considering changes?
- 4) Potential management alternatives
- 5) How to provide scoping comments
- 6) Next steps
- 7) Stock status
- 8) Commercial fishery trends and socioeconomic information
- 9) Additional resources

# 1) Introduction

- Joint management
- Goal of amendment
- Seeking public comments



© Michael Eversmier

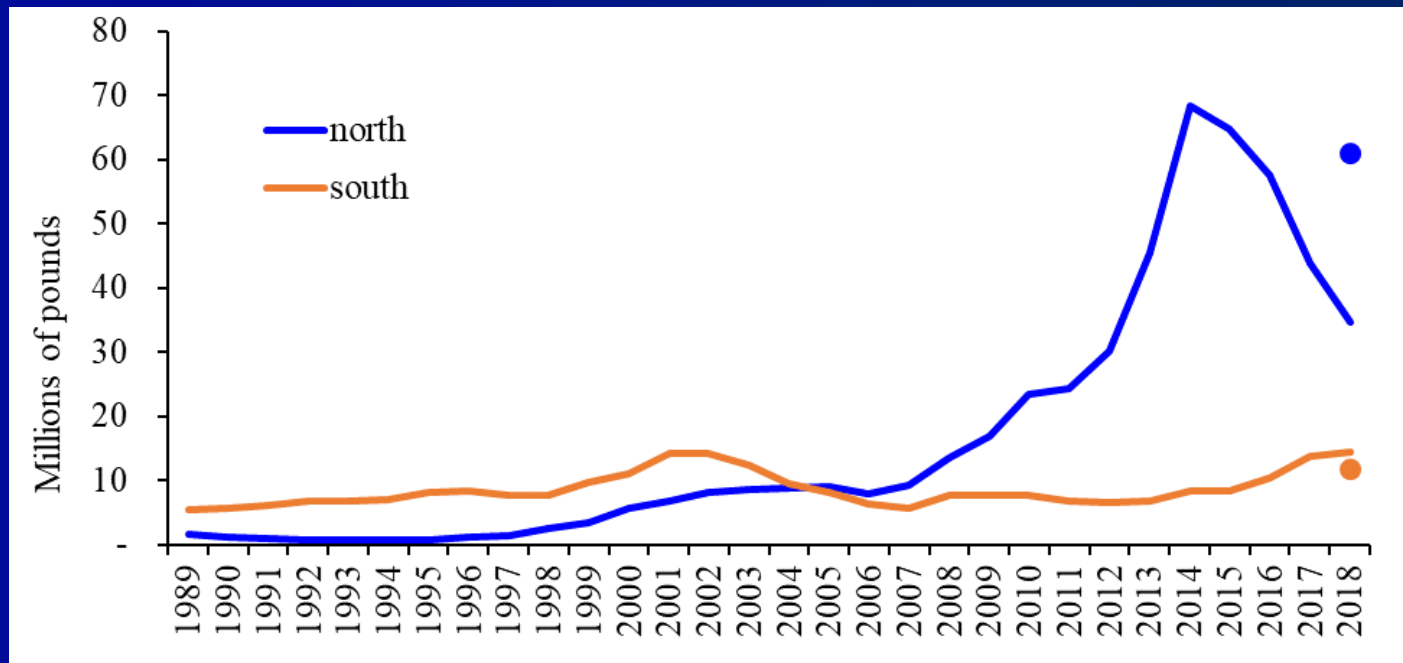
## 2) What are the current state allocations and how were they developed?

- Council FMP – coastwide.
- ASMFC FMP – allocated among states.
- Implemented through joint Amendment 13 (final action 2002, implemented 2003).
- Based loosely on landings data from 1980-2001.

State	Allocation
ME	0.5 %
NH	0.5 %
MA	13.0 %
RI	11.0 %
CT	1.0 %
NY	7.0 %
NJ	20.0 %
DE	5.0 %
MD	11.0 %
VA	20.0 %
NC	11.0 %

### 3) Why are the MAFMC and ASMFC considering changes? (1/3)

- 67% of coastwide quota allocated to “southern region” (i.e., NJ-NC).
- Abundance and distribution changes.



### 3) Why are the MAFMC and ASMFC considering changes? (2/3)

- ASMFC formed Commercial Black Sea Bass Working Group (Aug 2018), Plan Development Team (Feb 2019) to identify and analyze potential management approaches.
- ASFMC Draft Addendum XXXIII initiated October 2019.
- MAFMC amendment initiated (activated) December 2019.



### 3) Why are the MAFMC and ASMFC considering changes? (3/3)

#### ■ Goal of action:

- Consider adjusting the current commercial black sea bass allocations using current distribution and abundance of black sea bass as one of several adjustment factors to achieve more balanced access to the resource. These adjustment factors will be identified as the development process moves forward.
- Consider whether the state allocations should continue to be managed only under the Commission's FMP or whether they should be managed under both the Commission and Council FMPs.

## 4) Potential mgmt alternatives (1/8)

- Potential mgmt. approaches in scoping document based on Working Group and PDT recommendations.
- Everything will be considered draft until Council and Board approve the range of alternatives during the next joint discussion.
- Major changes to alternatives should be discussed jointly with the Board.

## 4) Potential mgmt alternatives (2/8)

- A. No action
- B. Increase CT allocation from 1% to 5%
- C. Dynamic adjustments to regional allocations (DARA)
- D. Trigger approach
- E. Percentage of quota distributed based on historical allocations
- F. Other allocation approaches
- G. Inclusion in Council's FMP

## 4) Potential mgmt alternatives (3/8)

### **B) Increase CT allocation from 1% to 5%**

- As a standalone option or prior to applying other alternatives.
- Details on how other states' allocations would change included in document.
- Increased biomass in CT state waters has made it increasingly difficult to constrain landings to their 1% allocation.

## 4) Potential mgmt alternatives (4/8)

### **C) Dynamic adjustments to regional allocations (DARA)**

- Formulaic approach to transition over time from current allocations to allocations that are all or partially based on regional distribution of the stock.
- Multiple sub-alternatives
  - Regional configurations
  - Frequency of adjustments to allocations
  - Maximum change in allocations per adjustment
  - Final weighting values for historical allocations vs. resource distribution.

# 4) Potential mgmt alternatives (5/8)

## D) Trigger approach

- Quota up to and including a pre-defined “trigger” amount would be distributed according to base allocations.
- Surplus quota above trigger would be distributed either
  - Evenly among states, or
  - Divided among regions in proportion to the most recent regional distribution information. Within regions, the surplus quota would then be divided either,
    - Evenly, or
    - In proportion to base allocations
- Two alternatives for “base allocations” may be considered
  - Always the starting allocations, or
  - The final state allocations from the previous year

## 4) Potential mgmt alternatives (6/8)

### **E) Percentage of quota distributed based on historical allocations**

- A certain % of quota would be allocated based on the starting allocations.
- Remaining percentage of the quota would be distributed differently. Potentially
  - Evenly among states, or
  - Divided among regions in proportion to the most recent regional distribution information. Within regions, the surplus quota would then be divided either,
    - Evenly, or
    - In proportion to base allocations

## 4) Potential mgmt alternatives (7/8)

### **F) Other approaches**

- Council and Board may consider other approaches not described in scoping document.
- Other approaches may be recommended through scoping.



## 4) Potential mgmt alternatives (8/8)

### **G) Inclusion in the Council's FMP**

- Should the state allocations be added to the Council's FMP?
- Would allow both the Council and Board to have a voting role in future changes.
- Would not change how the fisheries are managed, monitored, or carried out unless the Council and Board decide to consider alternatives for other specific changes.

## 5) How to provide scoping comments

- Attend the scoping hearing.
- Submit written comments through online form, email, mail, or fax.

# 6) Next steps

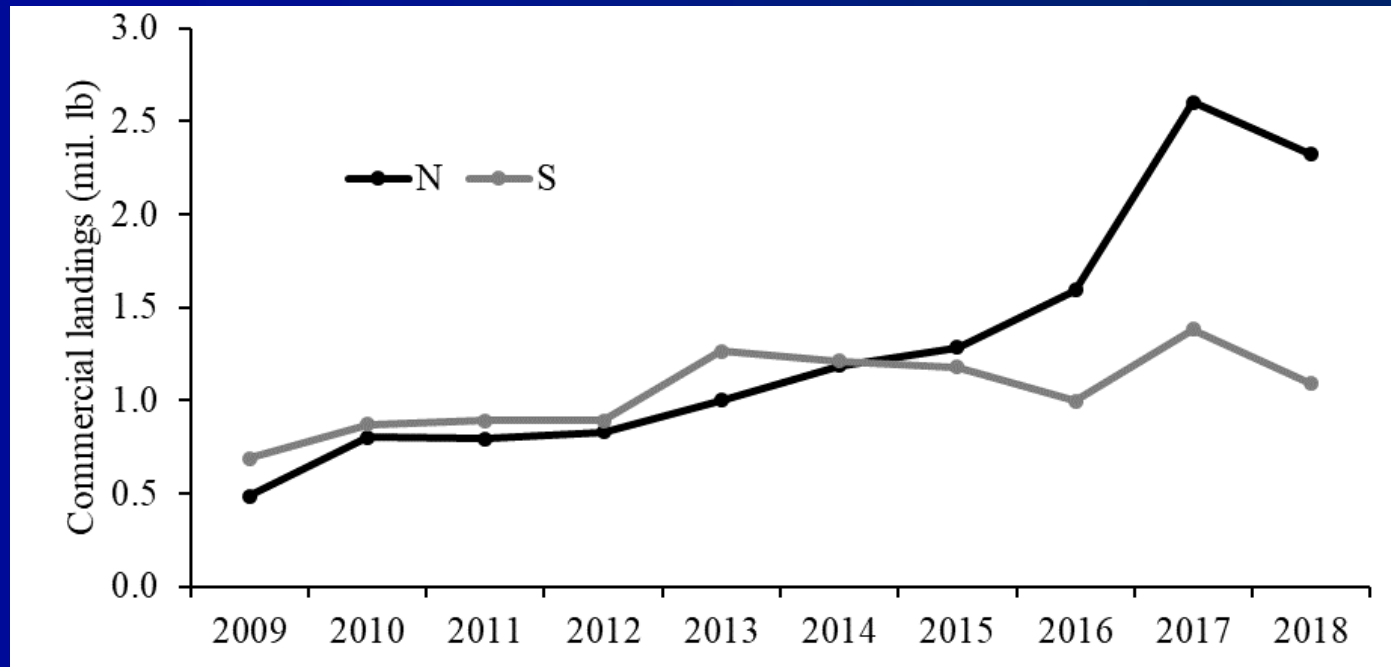
<b>April/May 2020</b>	Council scoping hearing and comment period
<b>June or August 2020</b>	Council and Board review scoping comments and Plan Development Team recommendations before approving range of alternatives and draft addendum document
<b>Late summer/early fall 2020</b>	Public hearings
<b>December 2020</b>	Council and Board take final action (i.e., chose preferred alternatives for implementation)
<b>January 2021</b>	Implementation of changes through Commission's FMP
<b>Early though mid-2021</b>	Federal rulemaking and comment periods (if needed)
<b>Late 2021/Early 2022</b>	Effective date of changes to Council FMP (if any)

# 7) Stock status

- Not overfished, overfishing not occurring in 2018.
  - SSB 2.4 times target level.
  - Fishing mortality 9% below threshold that defines overfishing.
  - 2011 year class largest since at least 1989. 2015 year class also above average. 2017 year class 72% below 1989-2017 average.

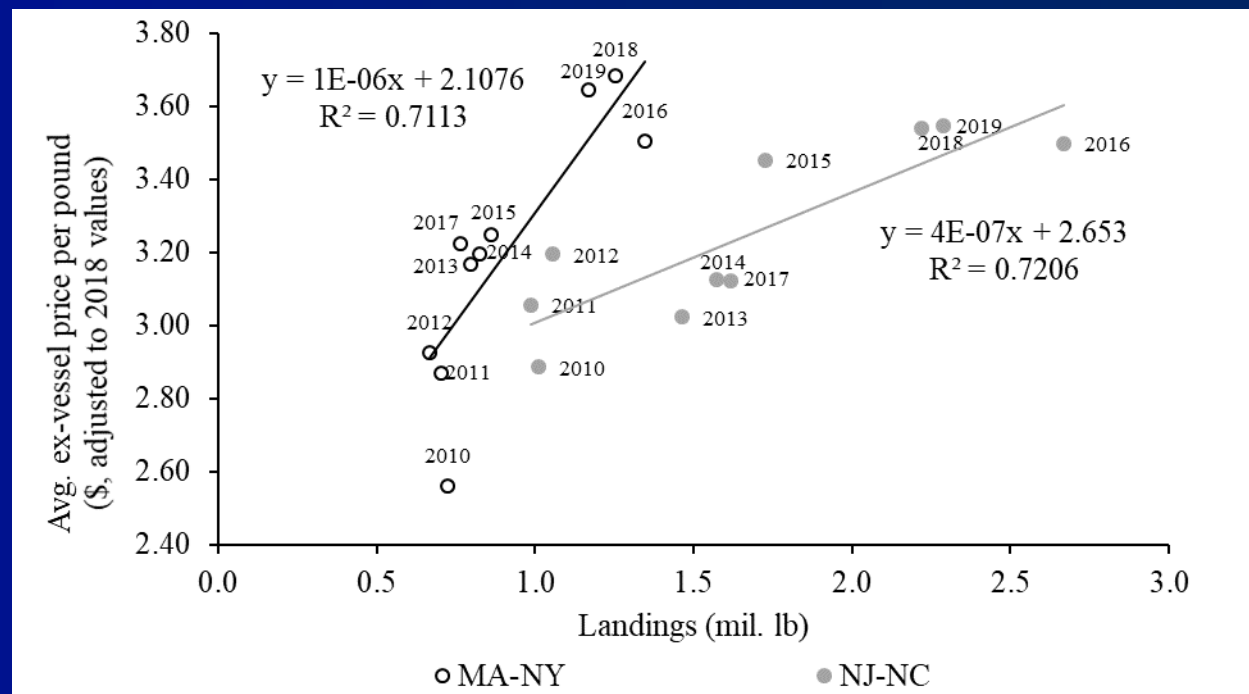
# 8) Commercial fishery trends and socioeconomic information (1/3)

- Landings by region of catch has changed over time.



# 8) Commercial fishery trends and socioeconomic information (2/3)

- BSB ex-vessel price per pound increased with increases in landings, 2010-2019.
- Price also increased over time. Could reflect increased demand.
- Sudden, usually temporary, price drops can occur.



## 8) Commercial fishery trends and socioeconomic information (3/3)

- Bottom otter trawl gear tends to account for a higher % of landings in years with higher quotas.
- States take different approaches to manage their fisheries.
- Economic impacts of any allocation changes will vary based on how states adjust their measures in response.
- For example, ITQ vs. non-ITQ fishermen and trawl vs. pot fishermen may experience different impacts of any changes.

# 9) Additional resources

- Action webpage.
- Links to fishery information documents.
- Links to FMPs.
- Most recent stock assessment.



# Questions/discussion

- Any changes needed to proposed scoping plan and draft scoping document?
- Staff advise against major revisions to alternatives without consideration by Board.

