

BOEM

Bureau of Ocean Energy
Management

Renewable Energy Program Update

Briefing for the Mid-Atlantic Fisheries Management
Council

February 11, 2021



Outer Continental Shelf Renewable Energy

Outline

- **Status of Leasing/Plan Review**
- **COPs Under NEPA Review**
- **Environmental Studies**

BOEM Renewable Energy Stats

Competitive Lease Sales Completed: **8**

Active Offshore Leases Issued: **16**

Site Assessment Plans (SAPs) Approved: **10**

General Activities & Research Plans Approved: **2**

Construction and Operations Plans (COPs):

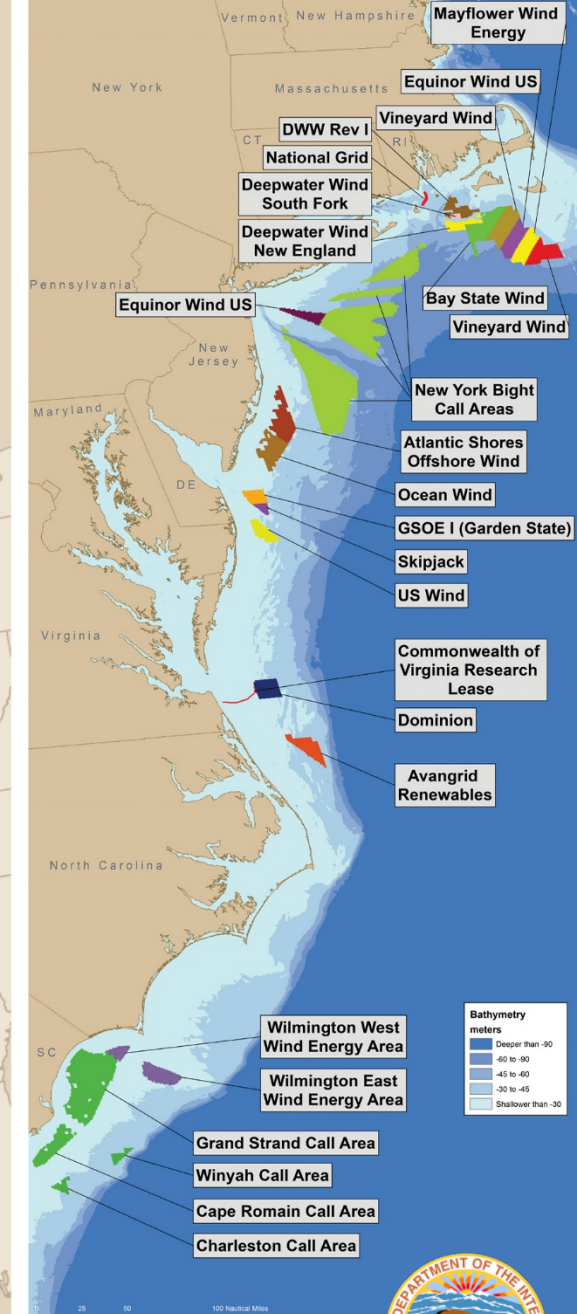
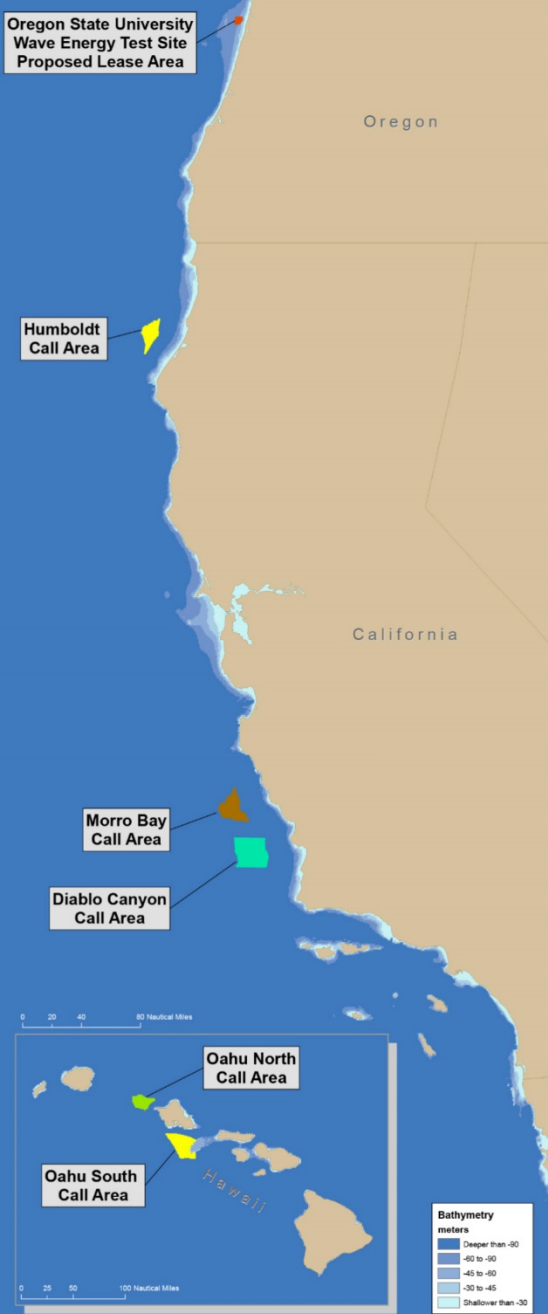
- Under Review **12**

- Anticipated within next 12 months **4**

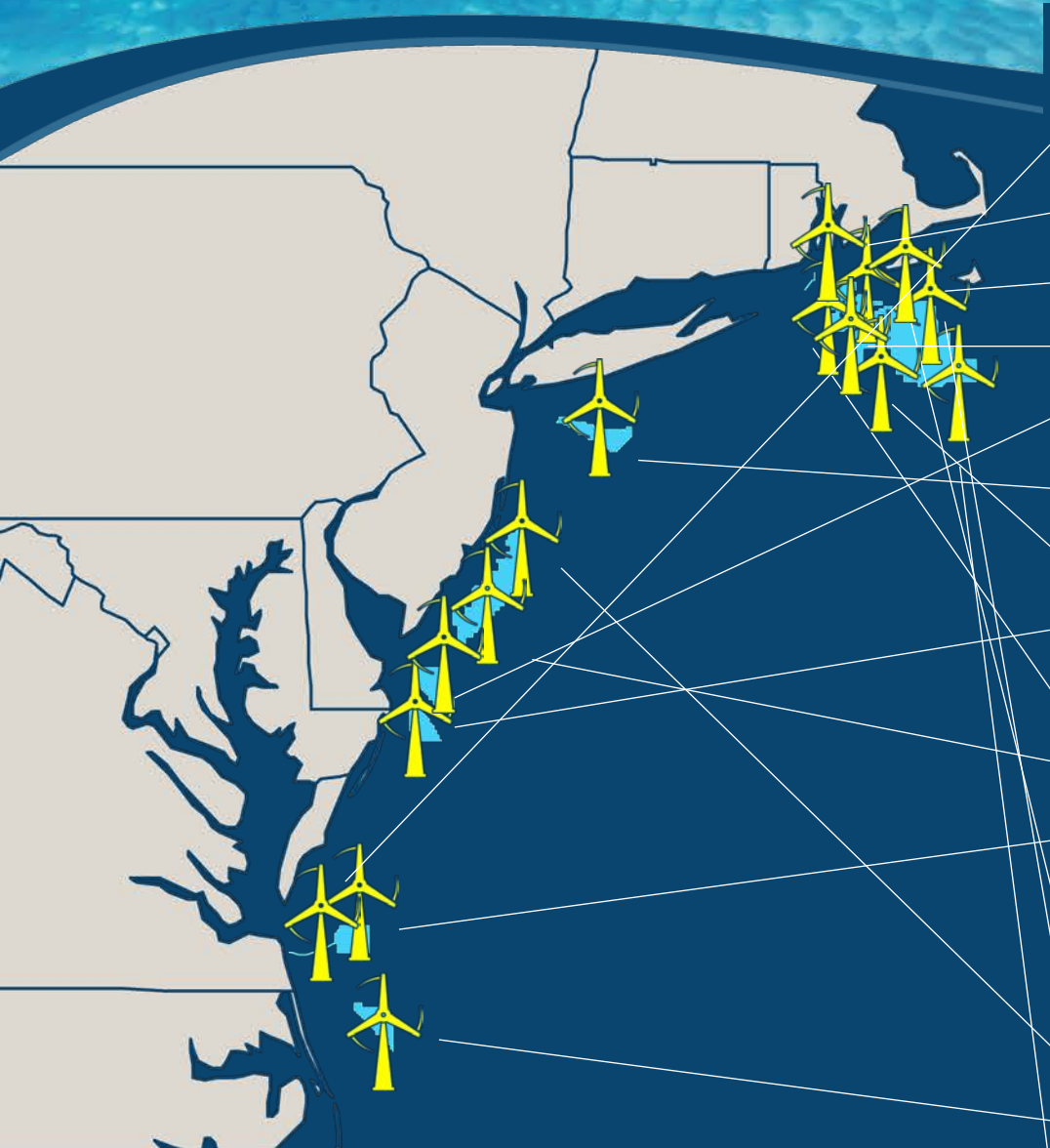
Guidance: **10**

Leasing Under Consideration: **7**

Steel in the Water: **2020**



Atlantic OCS Renewable Energy: "Projects in the Pipeline"



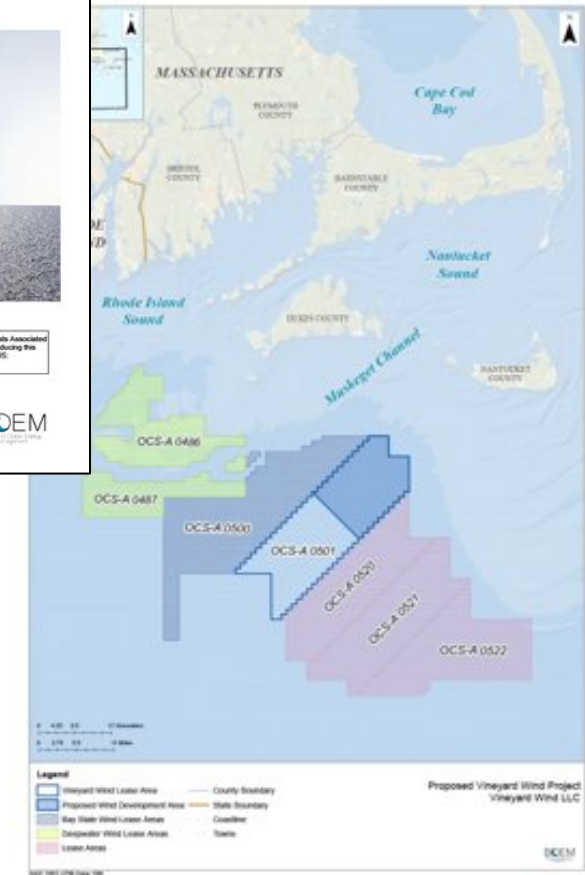
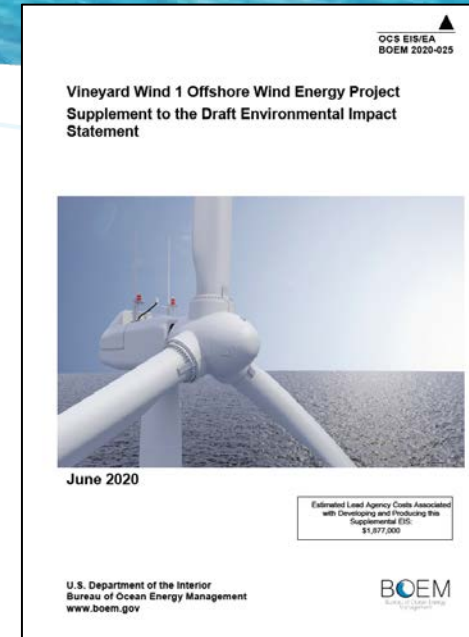
	Project	Company
2020	Coastal Virginia Offshore Wind Pilot	
▼	South Fork*	
▼	Vineyard Wind I	
▼	Revolution Wind*	
▼	Skipjack Windfarm*	
▼	Empire Wind*	
▼	Bay State Wind*	
▼	U.S. Wind*	
▼	Sunrise Wind*	
▼	Ocean Wind*	
▼	Coastal Virginia Offshore Wind Commercial*	
▼	Park City Wind*	
▼	Mayflower Wind	
▼	Atlantic Shores	
▼	Kitty Hawk*	
2030	OCS-A 0522	

Vineyard Wind I COP Assessment Resumption

- COP was withdrawn December 2020
- Vineyard Wind rescinded withdrawal January 22, 2021

Next Steps:

- Publish Notice in the *Federal Register* formally resuming review
- Finalize and publish Final EIS
- Minimum 30-day waiting period after publishing the FEIS before BOEM can sign a Record of Decision



Notice of Intent (NOI) to Prepare an Environmental Impact Statement (EIS)

- NOI published on October 19, 2018 (30-day public comment period closed on November 19, 2018)
- Public scoping meetings held November 5-8, 2018 in New Bedford, MA; Narragansett, RI; and East Hampton, NY.
- Scoping Report Available on project website: www.boem.gov/south-fork
- Comments can be found here:
www.regulations.gov/docket?D=BOEM-2018-0010

Notice of Availability (NOA) of Draft EIS

- Published in *Federal Register* **January 8, 2021**
- Three Virtual Public Meetings:
 - Tuesday, February 9, 2021 | 1:00 pm
 - Thursday, February 11, 2021 | 5:00 pm
 - Tuesday, February 16, 2021 | 5:00 pm
- 45-day public comment period closes **February 22, 2021**
- Additional information can be found at: www.boem.gov/south-fork

Types of information BOEM is looking for:

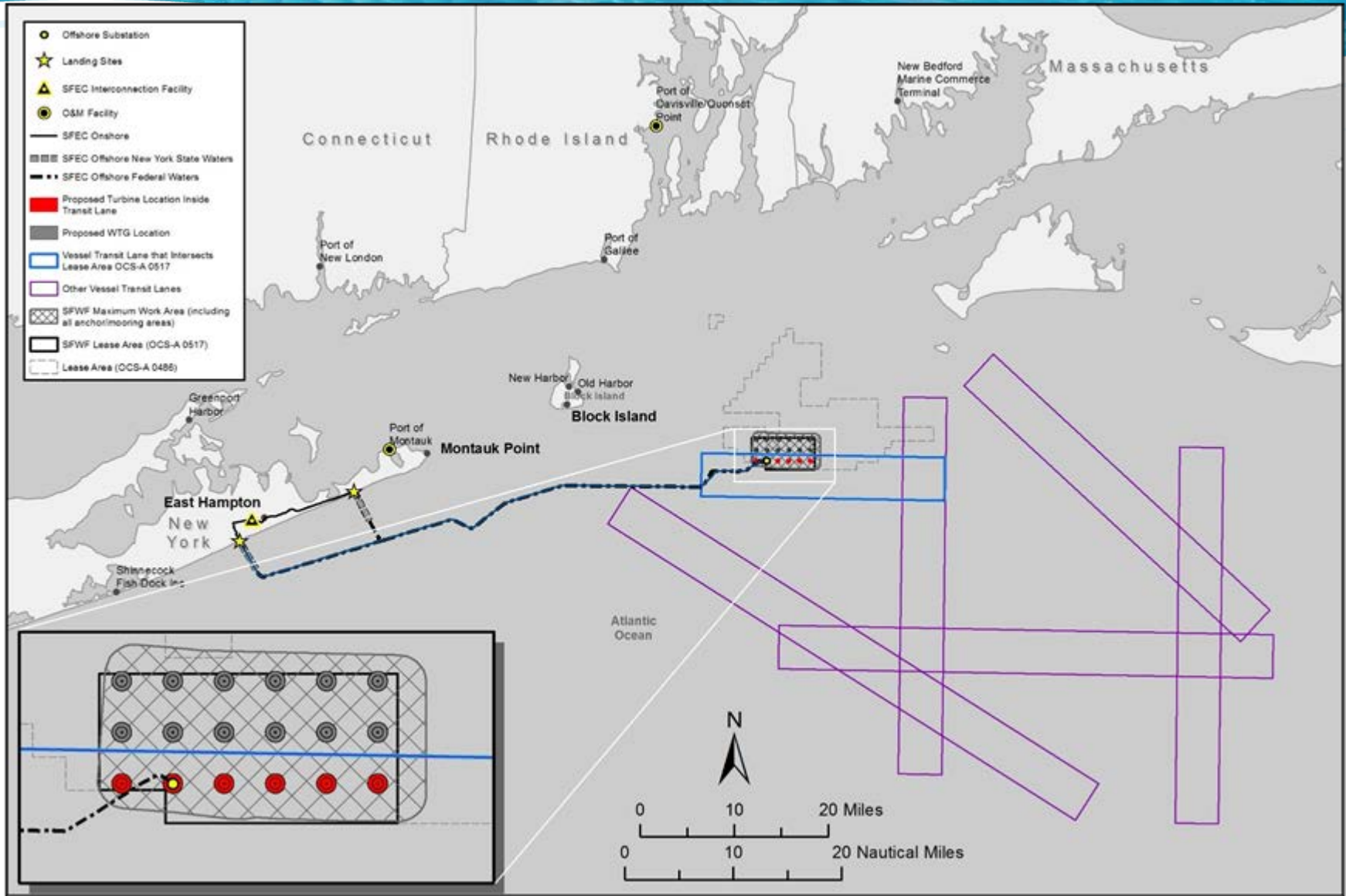
- Accuracy of information
- Adequacy of methodology or assumptions used in the environmental analysis
- New information relevant to the analysis or that would change the conclusions
- Different source of credible research
- Where clarification is needed

Proposed Action and Alternatives

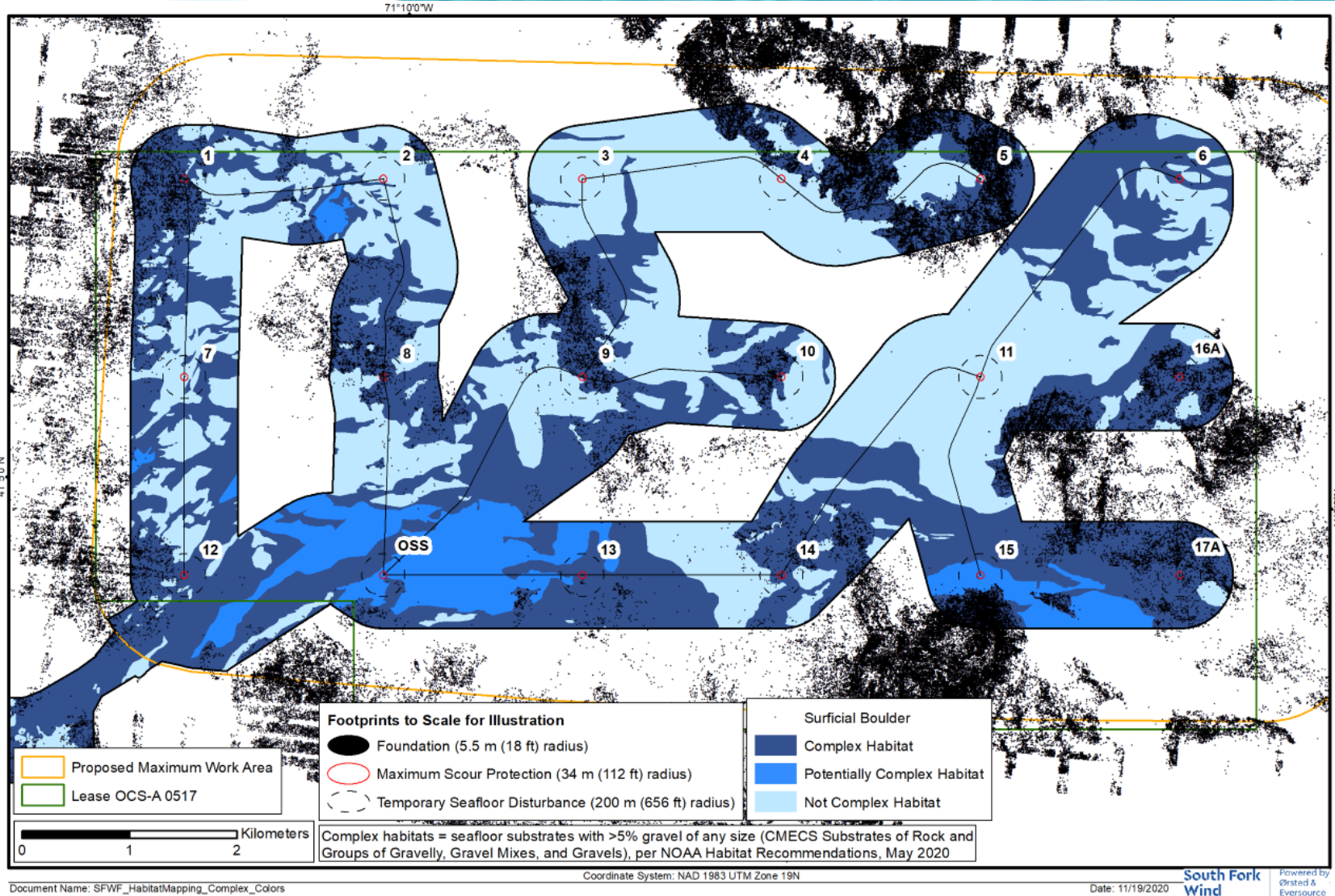
- **Proposed Action:** Up to 15 turbines, an offshore substation, and an export cable to supply electricity to the South Fork of Long Island in the Lease Area OCS-A 0517. Export cable with landing in Suffolk County, NY.
- **Vessel Transit Lane Alternative :** Remove 6 of 18 potential turbine locations to allow for a 4 nautical mile transit lane.
- **Fisheries Habitat Impact Minimization Alternative:** Identify turbine locations that cannot be occupied or where turbines need to be moved to reduce or eliminate impacts to complex habitat.
- No Action



Vessel Transit Lane Alternative



Fisheries Habitat Impact Minimization Alternative



Document Name: SFWF_HabitatMapping_Complex_Colors

Coordinate System: NAD 1983 UTM Zone 19N

Date: 11/19/2020

South Fork Wind

Powered by
Orsted &
Eversource

Resource	No Action	Proposed Action	Vessel Transit Lane Alternative	Fisheries Habitat Impact Minimization Alternative
Air quality: Direct and Indirect Impacts	Continuation of existing trends	Minor to moderate; minor beneficial	Minor to moderate; minor beneficial	Minor to moderate; minor beneficial
Air Quality: Cumulative Impacts	Negligible to moderate; minor beneficial	Minor; minor beneficial	Minor; minor beneficial	Minor; minor beneficial
Water quality: Direct and Indirect Impacts	Continuation of existing trends	Negligible to moderate	Negligible to moderate	Negligible to moderate
Water Quality: Cumulative Impacts	Minor to moderate: minor beneficial	Minor	Minor	Minor
Bats: Direct and Indirect Impacts	Continuation of population trends	Negligible to minor	Negligible to minor	Negligible to minor
Bats: Cumulative Impacts	Minor	Minor	Minor	Minor
Benthic habitat, essential fish habitat (EFH), invertebrates, and finfish: Direct and Indirect Impacts	Continuation of population trends.	Negligible to minor for benthic resources, minor for EFH, and negligible to minor for invertebrates and finfish	Negligible to minor for benthic resources, minor for EFH, and negligible to minor for invertebrates and finfish	Negligible to minor for benthic resources, minor for EFH, and negligible to minor for invertebrates and finfish
Benthic habitat, essential fish habitat (EFH), invertebrates, and finfish: Cumulative Impacts	Negligible to moderate	Moderate	Moderate	Moderate
				

Resource	No Action	Proposed Action	Vessel Transit Lane Alternative	Fisheries Habitat Impact Minimization Alternative
Birds: Direct and Indirect Impacts	Continuation of population trends.	Negligible to minor	Negligible to minor	Negligible to minor
Birds: Cumulative Impacts	Negligible to minor; minor beneficial	Minor	Minor	Minor
Marine mammals: Direct and Indirect Impacts	Continuation of population trends	Negligible to moderate	Negligible to moderate	Negligible to moderate
Marine mammals: Cumulative Impacts	Negligible to moderate	Moderate	Moderate	Moderate
Other terrestrial and coastal habitats and fauna: Direct and Indirect Impacts	Continuation of population trends	Negligible to minor	Negligible to minor	Negligible to minor
Other terrestrial and coastal habitats and fauna: Cumulative Impacts	Negligible to minor	Minor	Minor	Minor
Sea turtles: Direct and Indirect Impacts	Continuation of population trends	Negligible to minor	Negligible to minor	Negligible to minor
Sea turtles: Cumulative Impacts	Negligible to moderate	Moderate; moderate beneficial.	Moderate; moderate beneficial.	Moderate; moderate beneficial.

Resource	No Action	Proposed Action	Vessel Transit Lane Alternative	Fisheries Habitat Impact Minimization Alternative
Wetlands and WOTUS: Direct and Indirect Impacts	Continuation of existing trends	Negligible to minor	Negligible to minor	Negligible to minor
Wetlands and WOTUS: Cumulative Impacts	Minor	Minor	Minor	Minor
Commercial fisheries and for-hire recreation fishing: Direct and Indirect Impacts	Continuation of current trends.	Negligible to moderate	Negligible to moderate	Negligible to moderate
Commercial fisheries and for-hire recreation fishing: Cumulative Impacts	Negligible to moderate	Moderate	Moderate	Moderate
Cultural, resources: Direct and Indirect Impacts	Continuation of existing trends/issues.	Negligible to major	Negligible to major	Negligible to major
Cultural, resources: Cumulative Impacts	Negligible to major	Negligible to moderate	Negligible to moderate	Negligible to moderate
Demographics, employment, and economics: Direct and Indirect Impacts	Continuation of existing trends for population and employment.	Negligible to minor: minor to moderate beneficial	Negligible to minor; minor to moderate beneficial	Negligible to minor; minor to moderate beneficial
Demographics, employment, and economics: Cumulative Impacts	Negligible to minor; minor beneficial.	Minor; minor beneficial.	Minor; minor beneficial.	Minor; minor beneficial.



Resource	No Action	Proposed Action	Vessel Transit Lane Alternative	Fisheries Habitat Impact Minimization Alternative
Environmental justice: Direct and Indirect Impacts	Continuation of current demographic trends.	Minor to moderate Overall cumulative adverse impacts would be moderate.	Minor to moderate	Minor to moderate
Environmental justice: Cumulative Impacts	Negligible to moderate	Moderate	Moderate	Moderate
Land use and coastal infrastructure: Direct and Indirect Impacts	Continued activity in accordance with established land use patterns and regulations.	Negligible to moderate; minor beneficial	Negligible to moderate; minor beneficial	Negligible to moderate; minor beneficial
Land use and coastal infrastructure: Cumulative Impacts	Negligible to minor	Minor; minor beneficial	Minor; minor beneficial	Minor; minor beneficial
Navigation and vessel traffic: Direct and Indirect Impacts	Current navigation trends would continue.	Negligible to minor	Negligible to minor	Negligible to minor
Navigation and vessel traffic: Cumulative Impacts	Minor to moderate.	Moderate	Moderate	Moderate

Resource	No Action	Proposed Action	Vessel Transit Lane Alternative	Fisheries Habitat Impact Minimization Alternative
Other marine uses: Direct and Indirect Impacts	No new impacts	Negligible to moderate impacts to mineral extraction, military use, air traffic, land-based radar services, cables and pipelines, and scientific surveys	Negligible to moderate impacts to mineral extraction, military use, air traffic, land-based radar services, cables and pipelines, and scientific surveys	Negligible to moderate impacts to mineral extraction, military use, air traffic, land-based radar services, cables and pipelines, and scientific surveys
Other marine uses: Cumulative Impacts	Negligible to minor (most uses) to moderate (military uses) to major (scientific research surveys)	Minor for most uses. Moderate for military uses. Major for scientific research and protected species surveys.	Minor for most uses. Moderate for military uses. Major for scientific research and protected species surveys.	Minor for most uses. Moderate for military uses. Major for scientific research and protected species surveys.
Recreation and tourism: Direct and Indirect Impacts	Continuation of existing trends	Negligible to minor	Negligible to minor	Negligible to minor
Recreation and tourism: Cumulative Impacts	Minor to moderate; minor beneficial	Minor; minor beneficial	Minor; minor beneficial	Minor; minor beneficial
Visual resources: Direct and Indirect Impacts	Continuation of impacts to viewshed from past and current activities.	Negligible to major	Negligible to major	Negligible to major
Visual resources: Cumulative Impacts	Negligible to major	Moderate	Moderate	Moderate

Remaining EIS Schedule

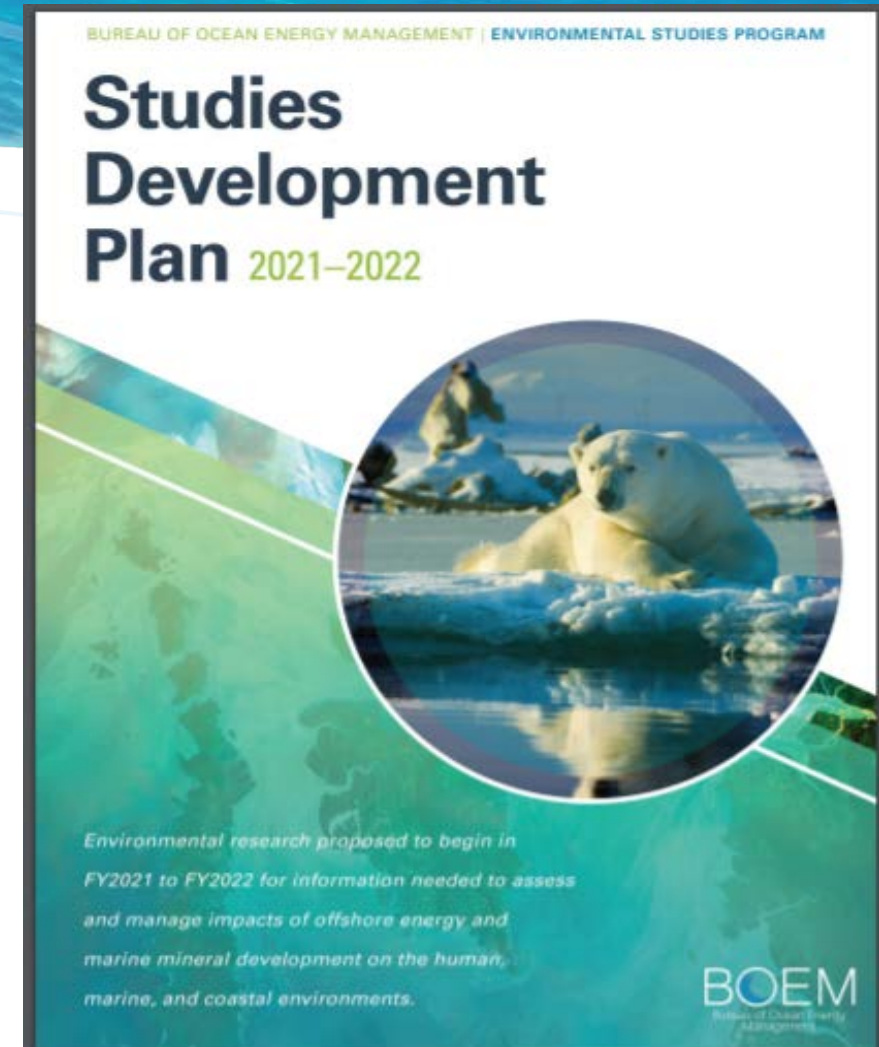
- **February 2021:** Hold public meetings
- **August 2021:** Publish Final EIS
- **October 2021:** Conclude consultations and publish Record of Decision

Where Can I Find More Information?

- www.boem.gov/south-fork
- South Fork's Construction and Operations Plan
- DEIS
- Virtual Meeting Room webpage
 - Posters
 - Presentations
 - Meeting registration link
 - FAQs

Environmental Studies Program

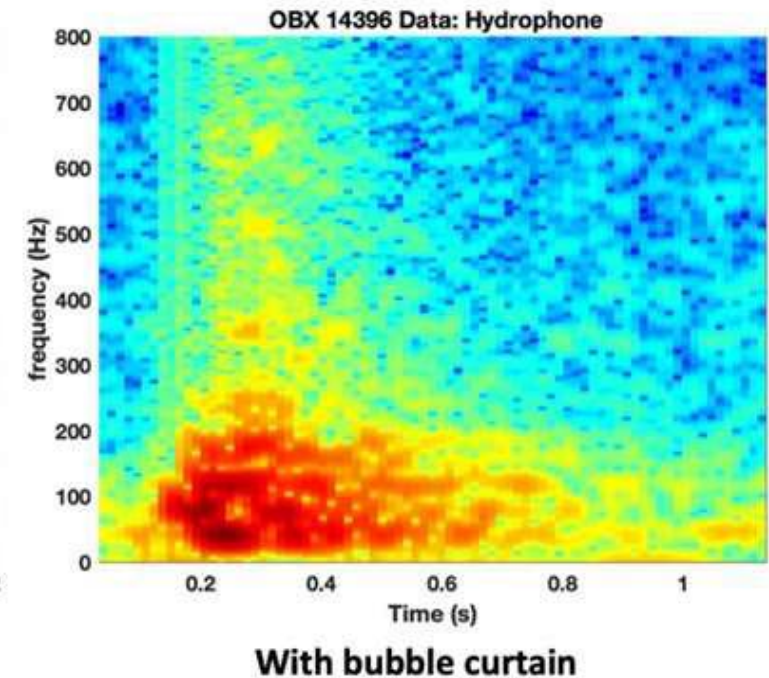
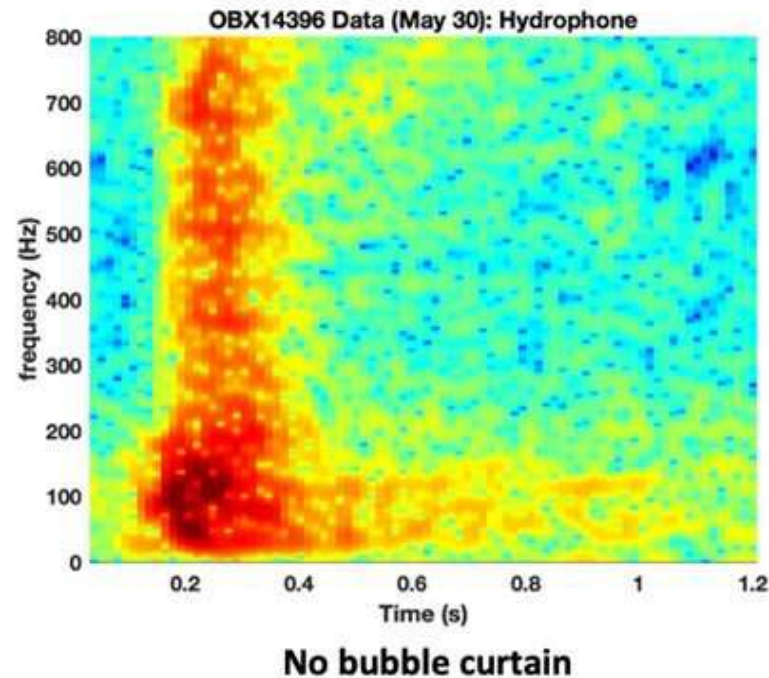
- BOEM concluded solicitation for 2022 study ideas in January
- Study ideas are reviewed internally and by the Standing Committee on Offshore Science and Assessment (COSA) convened under the National Academy of Sciences
- Results of studies are incorporated into BOEM environmental assessment and decision-making process



Mid-Atlantic Study Updates – CVOW Monitoring

- The bubble curtain reduced the sound by about 10 dB, which is significant
- Low frequency sound (< 200 Hz) is not reduced by the bubble curtain

- Attenuated sound pressure levels were significantly below modelled threshold ranges across taxa.



Where to Find Reports

- Main renewable energy landing page (Atlantic and Pacific):
www.boem.gov/environment/environmental-studies/renewable-energy-research
- BOEM Environmental Studies Search:
<https://marinecadastre.gov/espis/#/>

BOEM

Bureau of Ocean Energy
Management

BOEM.gov



Brian Hooker | brian.hooker@boem.gov | 571-393-4367