

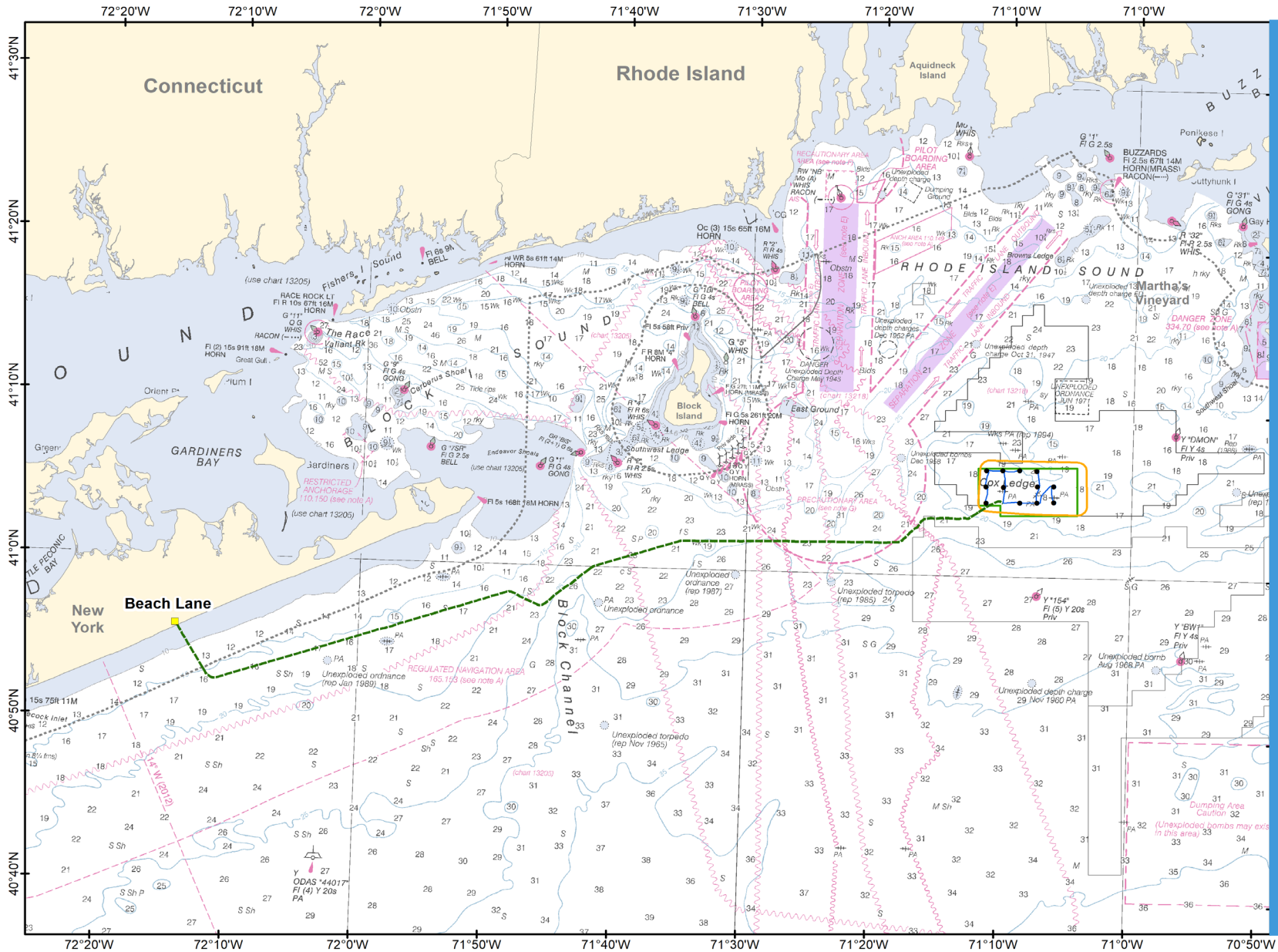
South Fork Wind

Update on construction activities



June 7, 2023

South Fork Wind Activities



**12 Turbines powering
70,000 homes**

Scope	Schedule (CY)
Export Cable	Q1-2
Foundations	Q2-3
Array Cables	Q2-3
Offshore Substation	Q2-3
Wind Turbines	Q3-4

Northeast Mariners Briefings



Sign up:

- us.orsted.com/mariners
- Survey



Twice weekly email updates

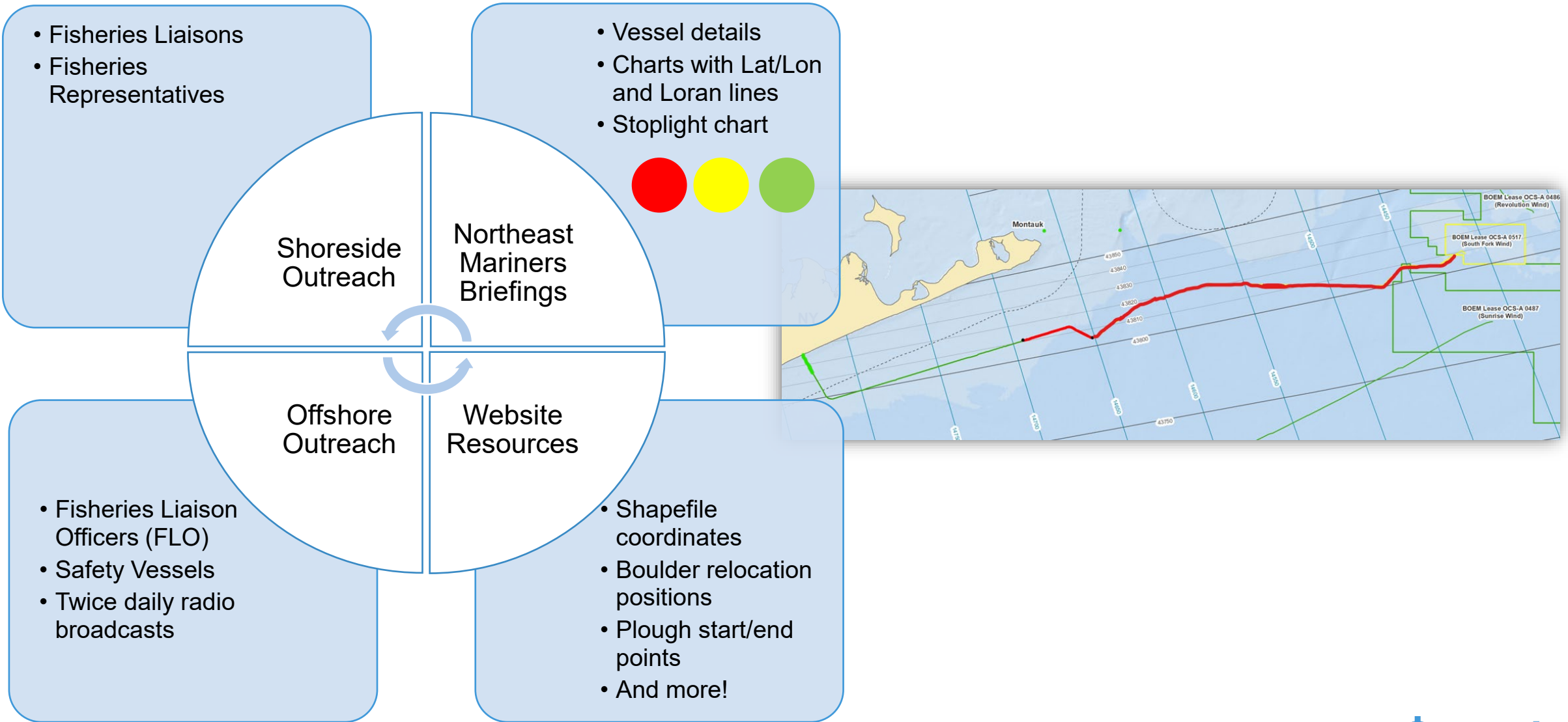


3- and 7- day outlooks



(401) 388-0034

Communication with Mariners



Export Cable Installation

CLV Living Stone

- Export Cable burial complete!
- Cable burial depth = 4-6 feet in State and Federal Waters



Safety vessels

- Will notify mariners of current activities
- **Request** that vessels not anchor or make bottom contact within 500m for safety
- Example safety vessels:

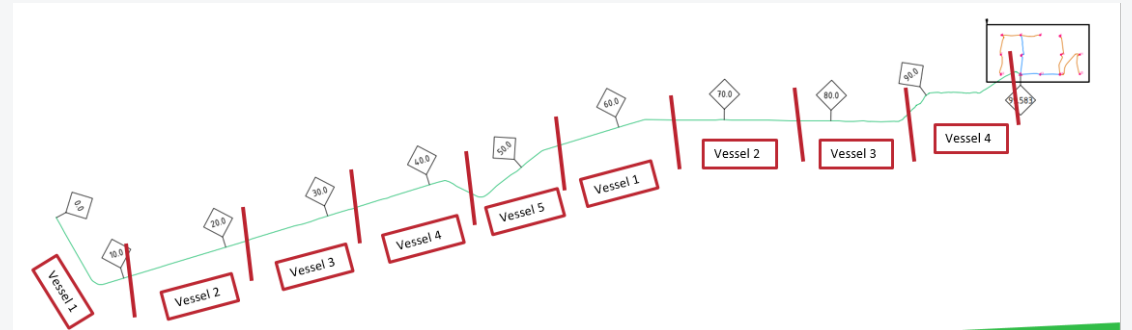


Mister Marco



Barbara Ann

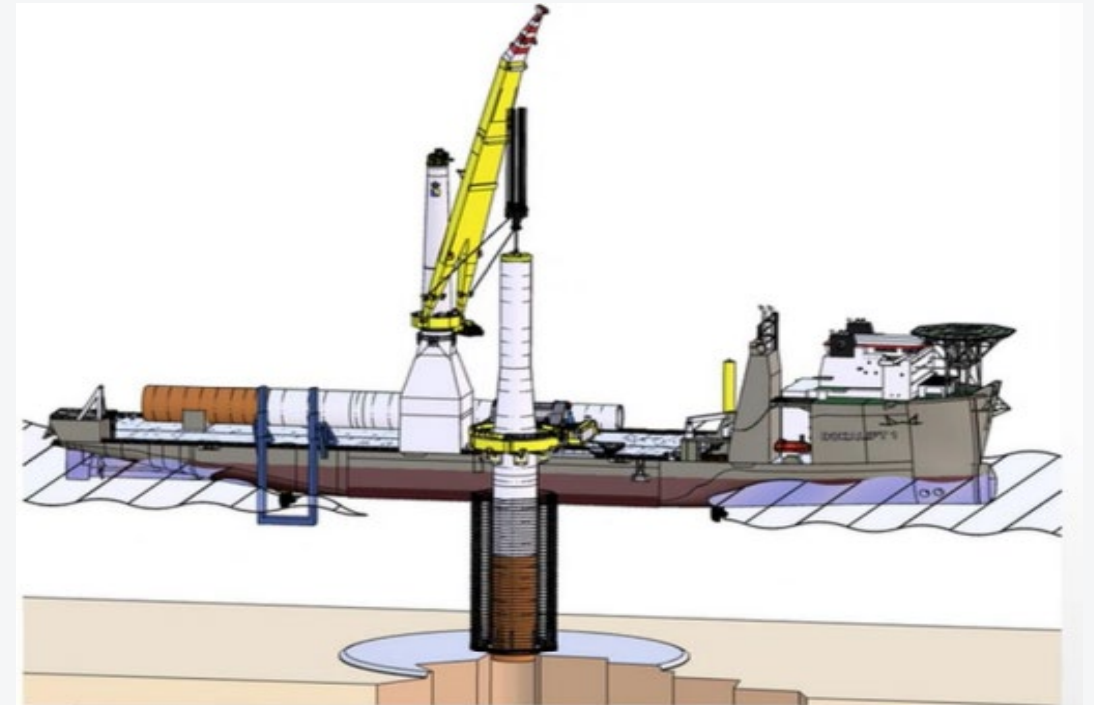
Example of how safety vessels may be utilized



1 vessel for every 6nm of cable

Foundation Installation

- Installation of 13 Monopiles will begin this week!
- Several FLOs on support vessels in the area
- Temporary 500m Safety Zones in place



Foundation Installation Vessel Spread



Symbol	Object
	Completions vessel (stand-by)
	Safety vessel
	Protected Species Observer vessel
	Bubble Curtain vessel
	Installation vessel
	Passive Acoustic Monitoring buoys
	Foundation location

Resources



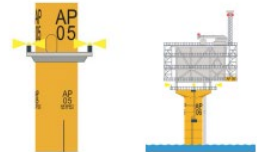
Ørsted Navigating in South Fork Wind (SFW)

This summer, Ørsted and Eversource will install and construct the offshore components for South Fork Wind. Mariners can expect to see large construction vessels and many smaller support vessels in the lease area. There is no exclusion zone at the wind farm. Mariners can navigate and fish within the wind farm, except directly where construction vessels are operating.

Starting in June, we anticipate the installation of 13 fixed-bottom foundations, which are about 70 feet tall, and the offshore electrical substation.

Temporary yellow lights mark these locations, each with a 5 NM range. Each location has a unique name, such as AP 05, seen here. Some will have AIS and fog horns. Key VHF Channel 83A five (5) times to activate the foghorn.

Starting in August, we will install the remaining sections - the wind turbine and its three blades. The finished towers will have lower intensity yellow lights, which will flash together.



- Each location has a unique name like AP 05
- Fixed-bottom foundations, which are about 70ft tall and the offshore electrical substation

Fully constructed towers will be 786 feet tall, have a blade clearance to the sea of 125 feet, and collectively power 70,000 homes. The wind turbines will be spaced into a uniform layout of 1 nautical mile by 1 nautical mile

Frequently Asked Questions

Q: Is the wind farm closed to vessel traffic?

A: A wind farm is open for navigation and fishing, except where major construction vessels are working. Listen for USCG Safety Zone Broadcasts and monitor the VHF radio to stay aware of on-water activities. Marked safety vessels will be on scene.

Q: What's HAT?

A: Wind turbine blade clearances are measured to Highest Astronomical Tide, or HAT, to make sure the distance between the surface of the water and the blades is never less than indicated.

For questions and updated construction schedules, please visit us.ørsted.com/mariners



Diagram of fully constructed offshore wind towers



us.ørsted.com • @ØrstedUS • 399 Boylston Street, 12th Floor, Boston, MA 02116



Temporary U.S. Coast Guard Safety Zones: South Fork Wind Farm

What is a U.S. Coast Guard Safety Zone?

An area of water, approximately 500-meters (one quarter nautical mile radius) around each offshore wind monopile tower position, which may not be entered by any vessel except those with direct permission from the U.S. Coast Guard.



Scan here to view the USCG safety zone regulations

Why is there a Safety Zone?

The Coast Guard has determined potential safety risks associated with the extremely complex circumstances involved in the construction of offshore wind farms, including hydraulic pile driving, hammer operations, heavy lift operations, overhead cutting operations, potential falling debris, increased vessel traffic, and stationary barges in close proximity to the facilities and each other.

Based on these circumstances, the Coast Guard has determined that establishing safety zones within a 500-meter radius of each of the 13 monopile positions during their construction is warranted to ensure the safety of life, property, and the environment.

When are Safety Zones in effect?

Temporarily, usually up to 48 hours depending on weather and other factors. Enforcement periods and the exact locations of where the safety zone will be enforced will be announced in the weekly First Coast Guard District Local Notice to Mariners (NLM), published each Tuesday.

Mariners may subscribe to the LNM at the NAVCEN website <https://www.navcen.uscg.gov>.

Safety Zones may be in effect from the start of construction (June 2023), until the end of construction in Fall/Winter 2023. A USCG vessel or boat does not need to be on scene for the safety zone to be enforced.

Where are the Safety Zones?

The safety zones encompass a 500-meter radius around each tower (see Figure 1).

How do I know if a zone is being enforced?

There are two easy methods to determine if a safety zone is being enforced:

Listen: When mariners are underway, they should listen to the Coast Guard's safety broadcasts (normally announced on VHF 16 and broadcast on VHF channel 22A, or call 508-457-3211), speak to a Coast Guard asset if one is on scene, or speak to the South Fork Wind safety vessel on scene via VHF channels 13, 16, or 80A.

Read: Information is published online on both the USCG Coast Guard website and in Ørsted's Mariners Briefs.

Note: Ørsted uses a "Traffic Light" notification model.

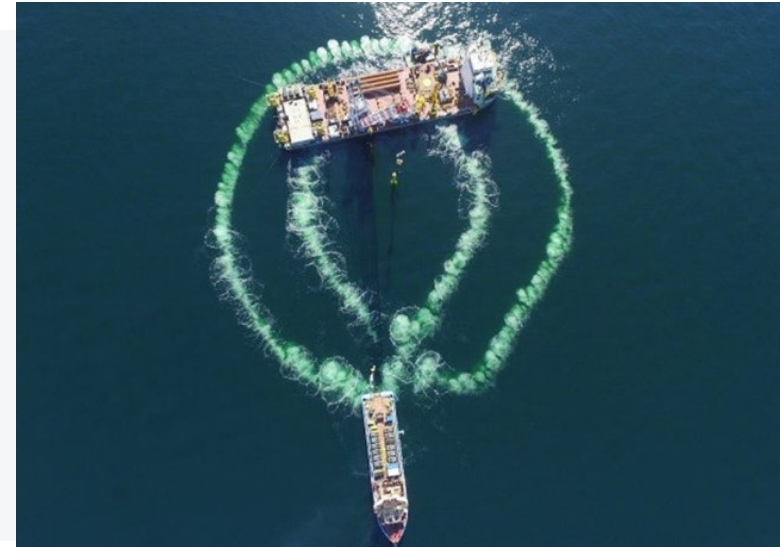
Safety Zones being enforced, or expected to be enforced, within 72 hours are red, future zones not yet enforced but expected to be in the next seven days, are marked as yellow. All other areas are marked as green.

us.ørsted.com • @ØrstedUS



Installation Vessels

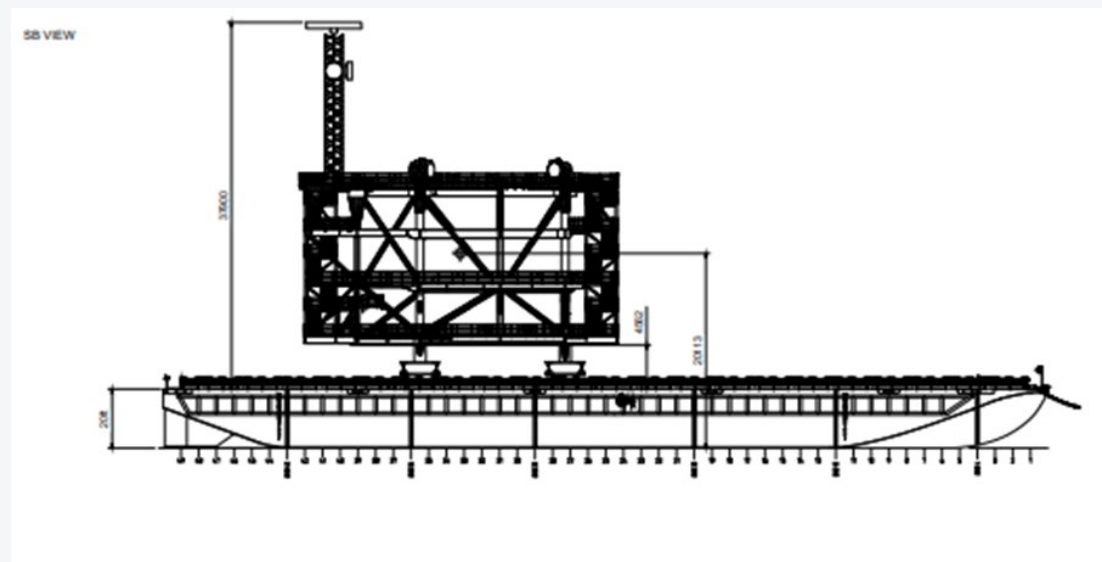
- *Bokalift 2*: Vessel installing foundations and offshore substation
- *Union Bear*: vessel creating bubble curtain for noise abatement
- Protected Species Observers (PSO) on support vessels
- 2 completion vessels will finalize the foundation



Offshore Substation (OSS)



Currently being transported from Texas



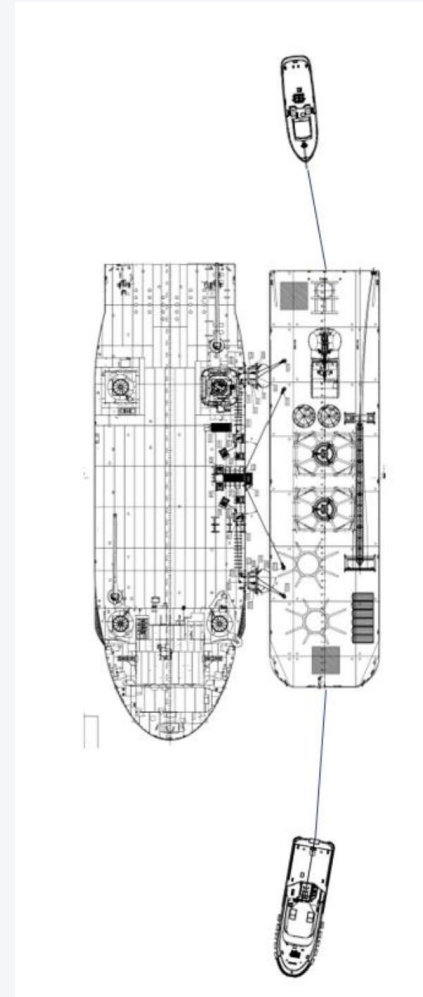
Delivered by barge and tug

Array Cable Installation

- Estimated June – end of July
- The Inter-Array cables connect each wind turbine with the offshore substation
- The Inter-Array cables will be installed using the same process of lay and then burial as the export cable.



Wind Turbine Generator (WTG) Installation and Commissioning



- Estimated Q3 – Q4
- New London: preassembly and load out.
- Each WTG will be transported via barge and tugs to the offshore location.
- Various construction support vessels such as safety vessels, CTVs and helicopters will be involved in WTG installation.



Marine Affairs Team

Supporting SFW



Ed LeBlanc
Head of
Marine Affairs

- Retired Coast Guard Officer
- Based in Massachusetts
- EDWLE@Orsted.com



John Mansolillo
Northeast
Marine Affairs
Manager

- Former Coast Guard Officer
- Based in Rhode Island
- JOMAN@Orsted.com



Julia Prince
Marine Affairs
Specialist

- Former NY Elected Official –
Town of East Hampton
- Based in Long Island
- JULPR@Orsted.com



Claire Hodson
Marine Affairs
Specialist - RI

- Former Charter Fisherman,
Aquaculture, URI / Sea Grant
- Based in Rhode Island
- CLAHO@Orsted.com

- Information for Mariners
 - [Offshore Wind Farm Information for Mariners | Ørsted \(orsted.com\)](#)
- USCG D1 Local Notice to Mariners
 - [Local Notices to Mariners | Navigation Center \(uscg.gov\)](#)
- Shared mailbox
 - MANEP@orsted.com