



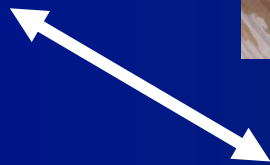
Intro

Pelagic Workshop

April 2018

Management Overview

■ Localized = states =



■ Regional inshore = Commission =



■ More offshore = Council =



■ Highly Migratory Tunas/Sharks = NMFS

Management Overview - Council

- U.S. Congress sets “the rules”
- NMFS provides guidance (lawsuits)
- Councils set policy within “the rules”
- NMFS approves/disapproves
- NMFS implements/enforces

- Per Congress, Scientific and Statistical Committee (SSC) sets upper catch limits
 - Academics

Pelagic & Higher Volume

- Menhaden (Commission)
- River Herring (Commission)
- Atlantic Herring (New England Council)
- Hake/Whiting (New England Council)
- Atlantic Mackerel (MAFMC)
- Atlantic Butterfish (MAFMC)
- Longfin Squid (MAFMC)
- Illex Squid (MAFMC)

Pelagic & Higher Volume

- Menhaden (198,000 mt)
- River Herring (low)
- Atlantic Herring (101,000 mt)
- Hake/Whiting (44,000 mt)
- Atlantic Mackerel (20,000 mt)
- Atlantic Butterfish (11,000 mt)
- Longfin Squid (23,400 mt)
- Illex Squid (24,000 mt)

Pelagic & Higher Volume

■ Menhaden (198,000 mt)

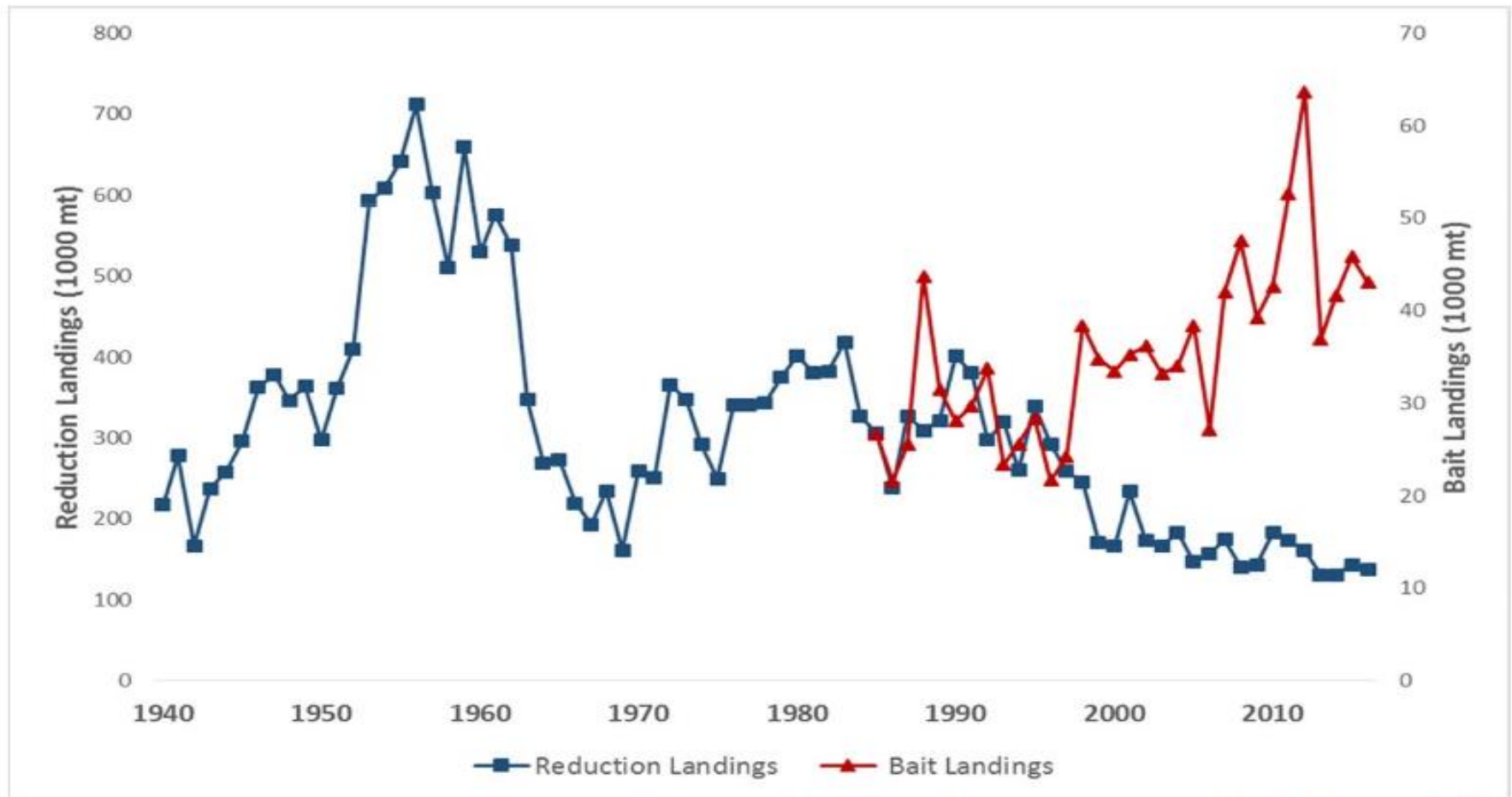


Figure 1. Landings from the reduction purse seine fishery (1940–2016) and bait fishery (1985–2016) for Atlantic menhaden. Note: there are two different scales on the y-axes.

Pelagic & Higher Volume

■ River Herring (low)

FIGURES

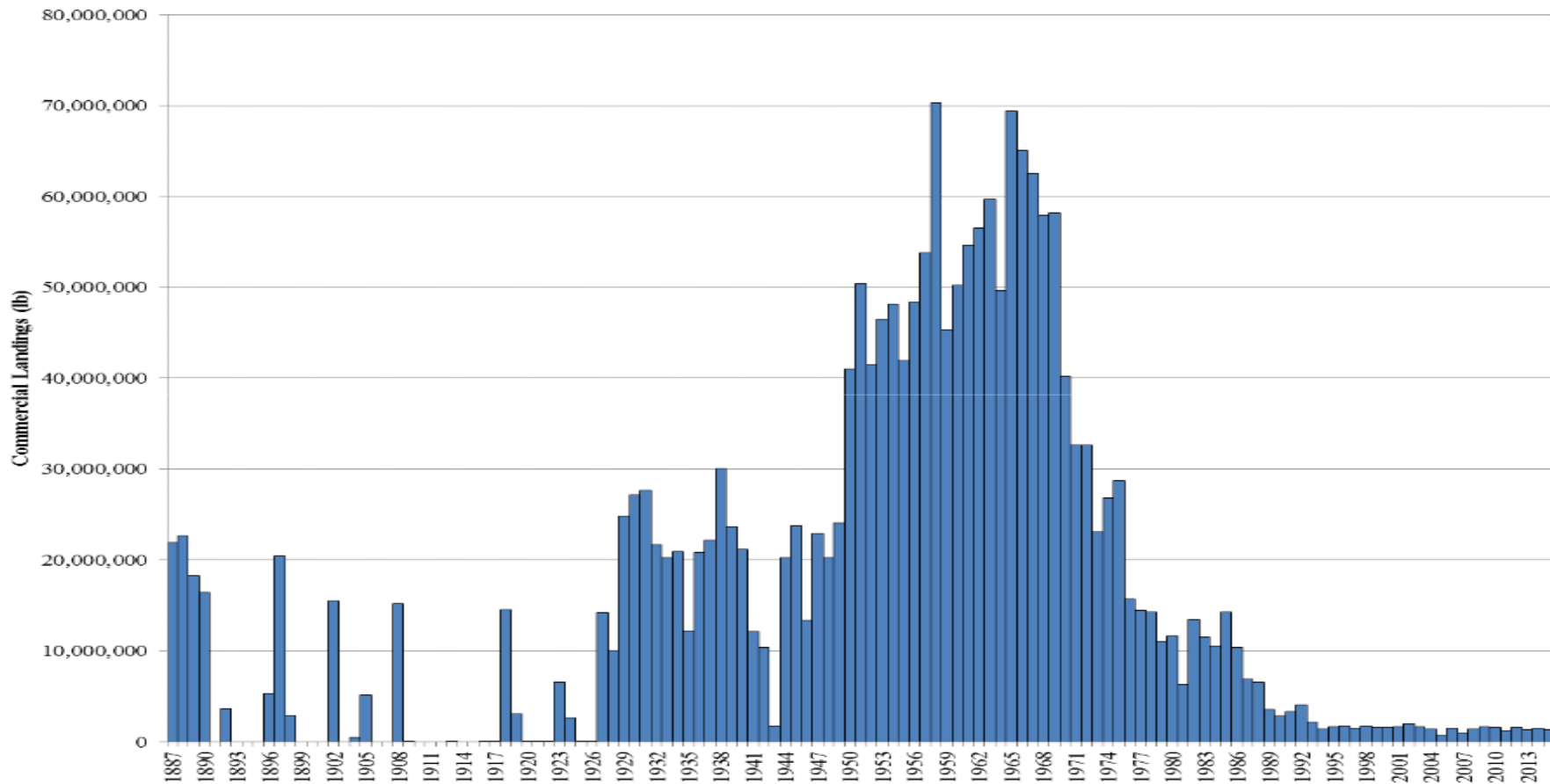


Figure 2.1 Domestic commercial landings of river herring from 1887 to 2015.

Pelagic & Higher Volume

- Atlantic Herring (101,000 mt)

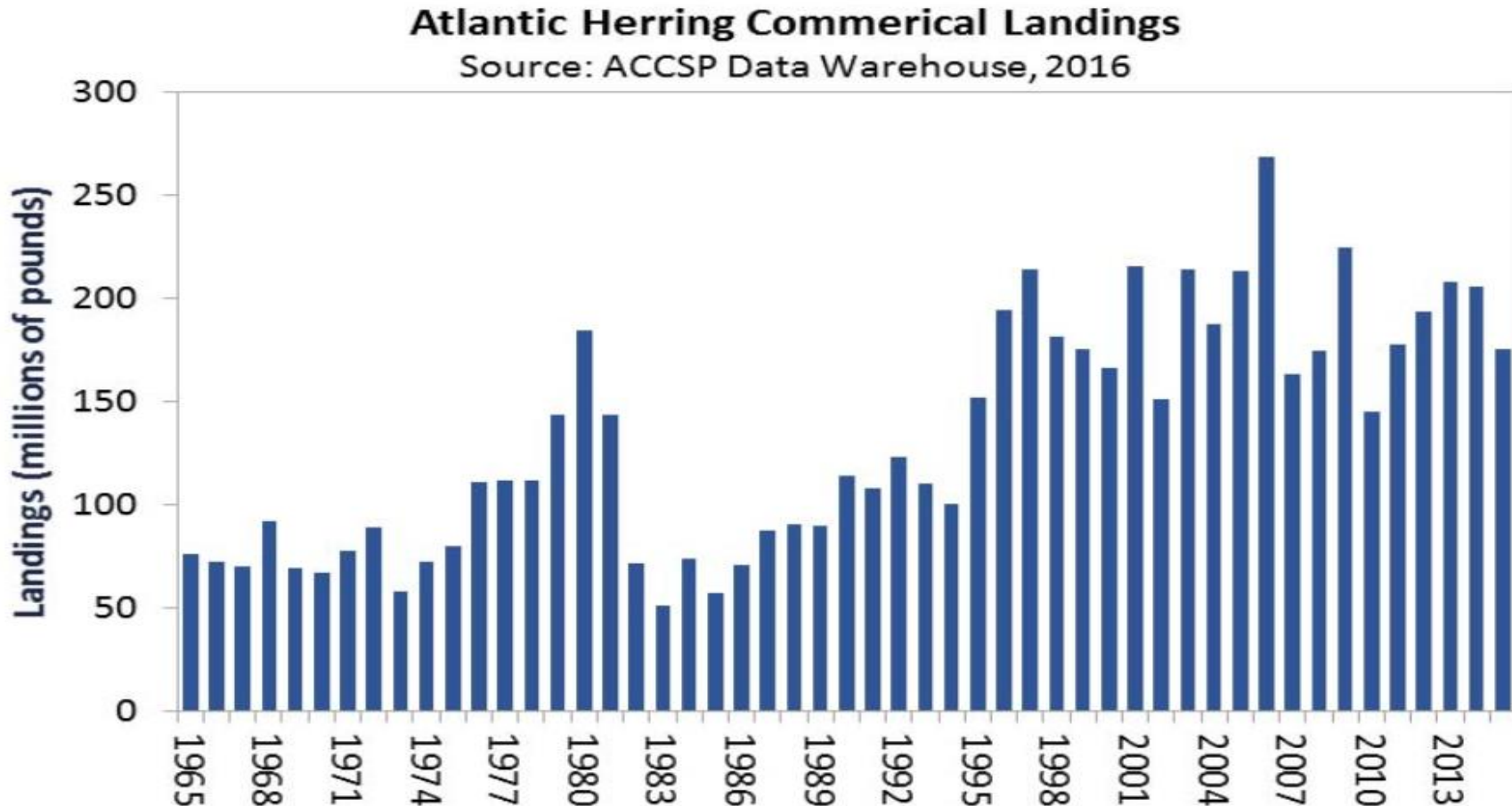
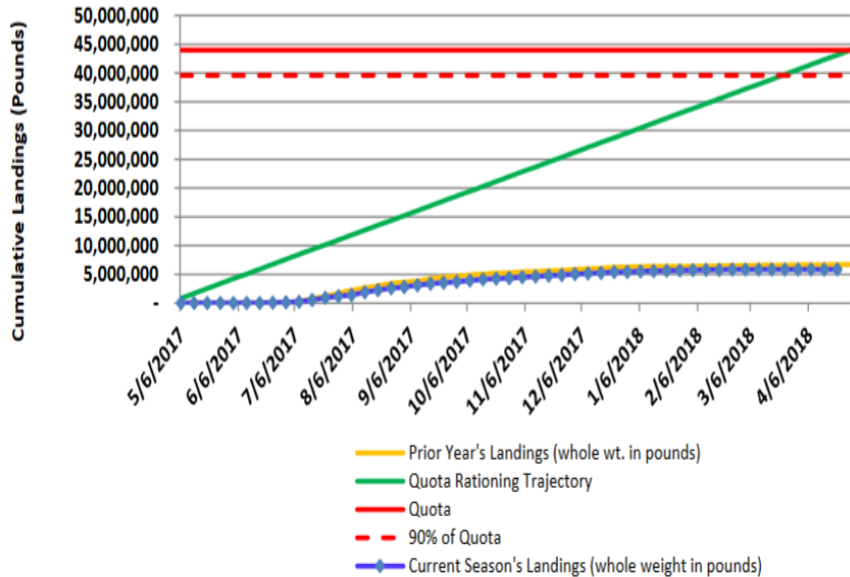


Figure 3. Commercial Atlantic herring landings by the U.S. fleet from 1965-2015

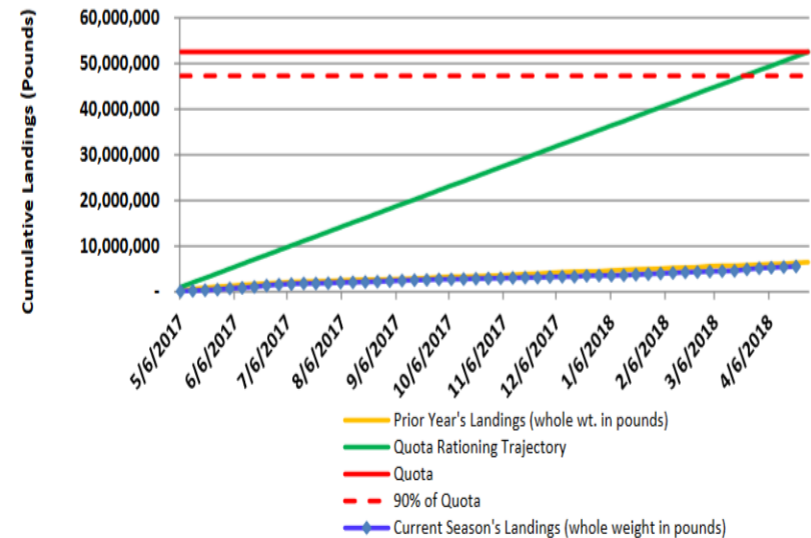
Pelagic & Higher Volume

■ Northern Silver Hake; Southern Whiting

Northern Silver Hake

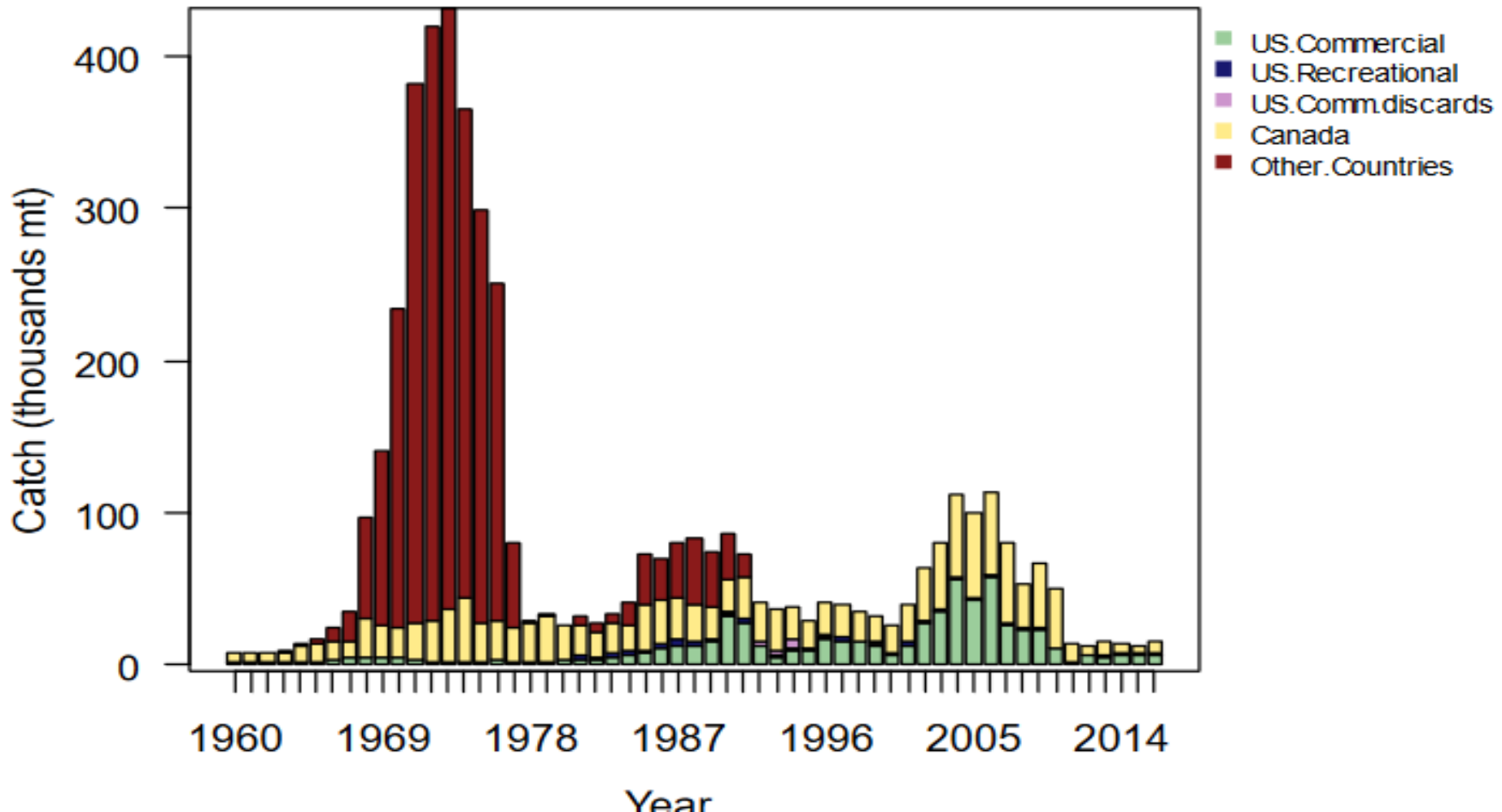


Southern Whiting



Pelagic & Higher Volume

■ Atlantic Mackerel (20,000 mt)



Pelagic & Higher Volume

■ Atlantic Butterfish (11,000 mt)

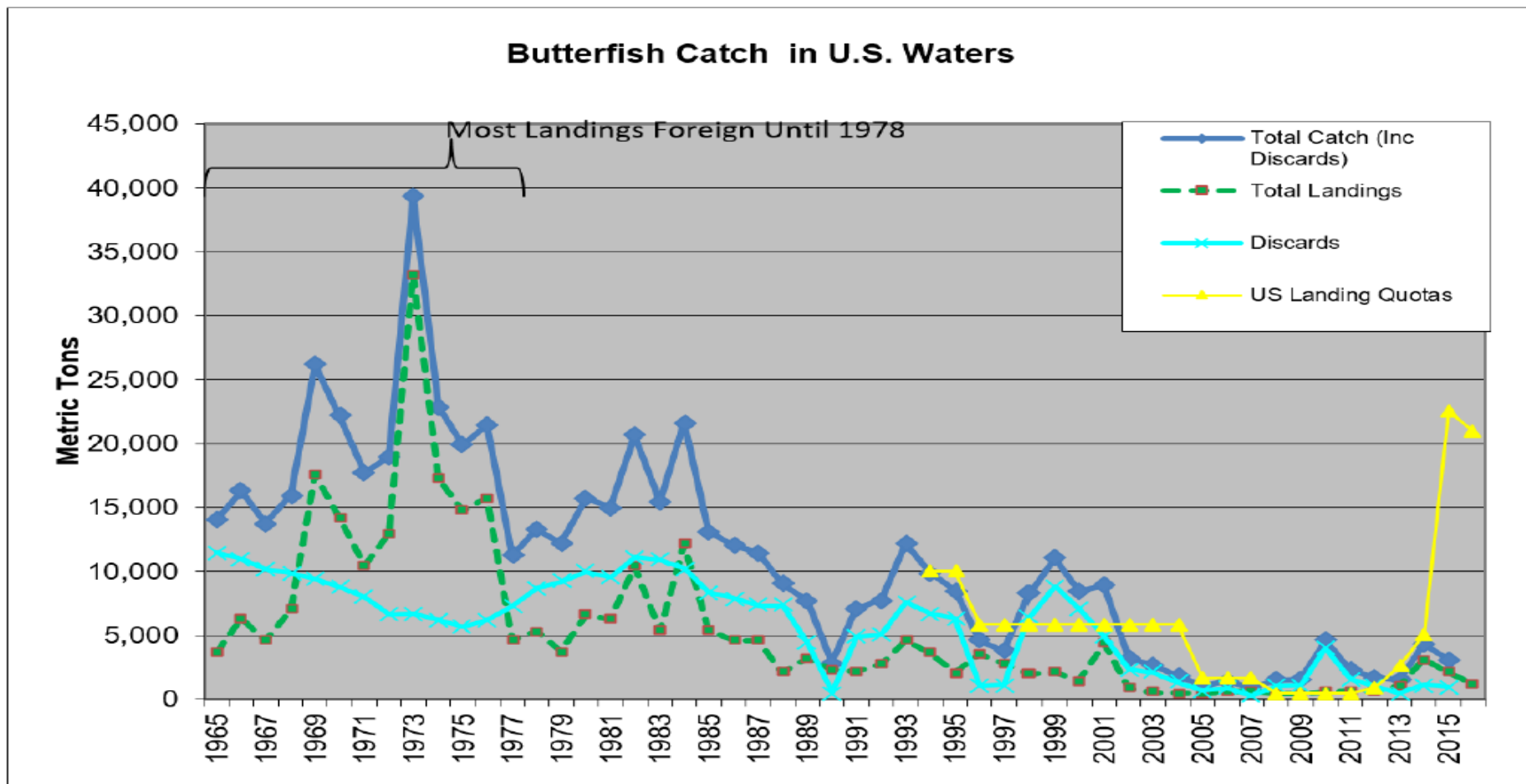


Figure 11. Butterfish Catch in U.S. Waters

Pelagic & Higher Volume

■ Longfin Squid (23,400 mt)

Loligo Landings in U.S. Waters

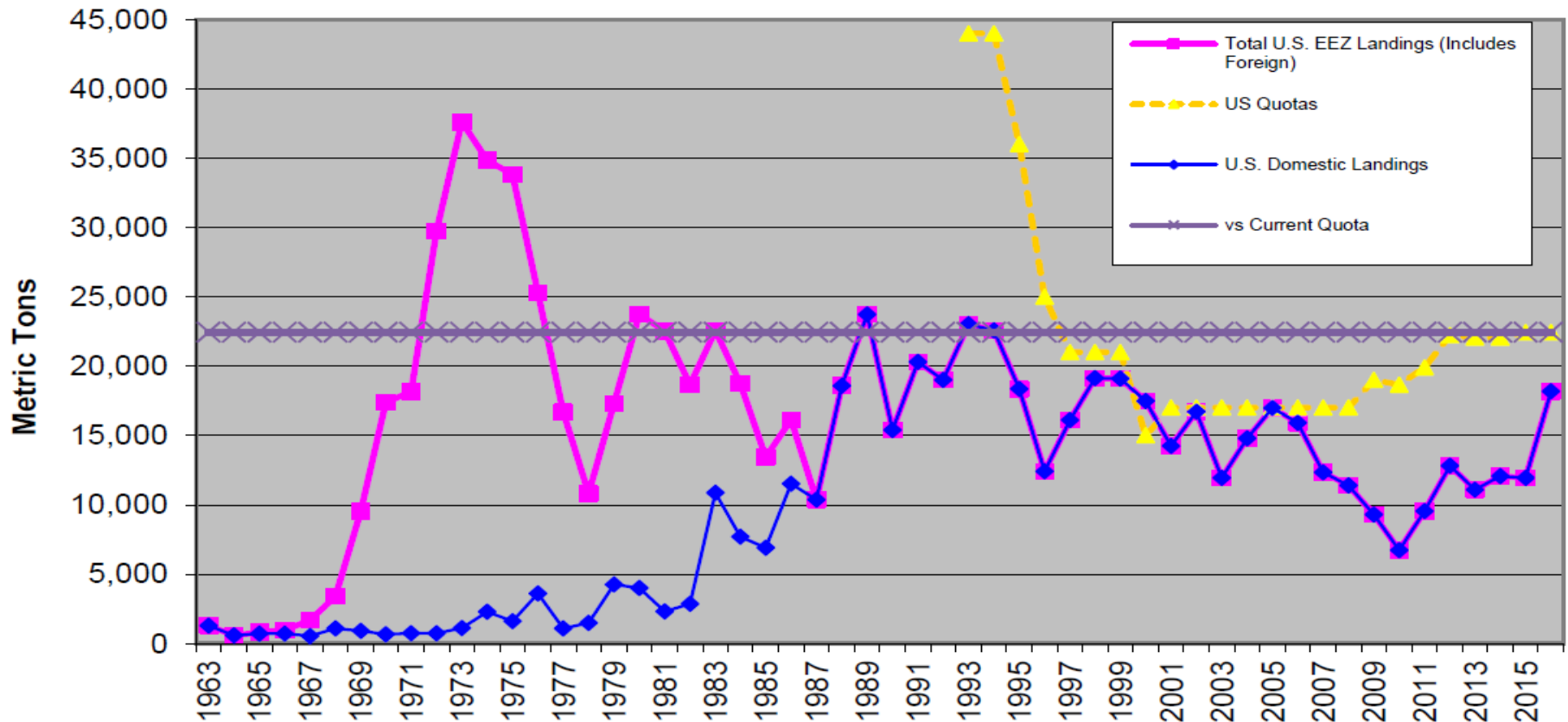


Figure 1. Historical Longfin Squid Landings in the U.S. EEZ

Pelagic & Higher Volume

■ Illex Squid (24,000 mt)

Illex Landings in U.S. Waters

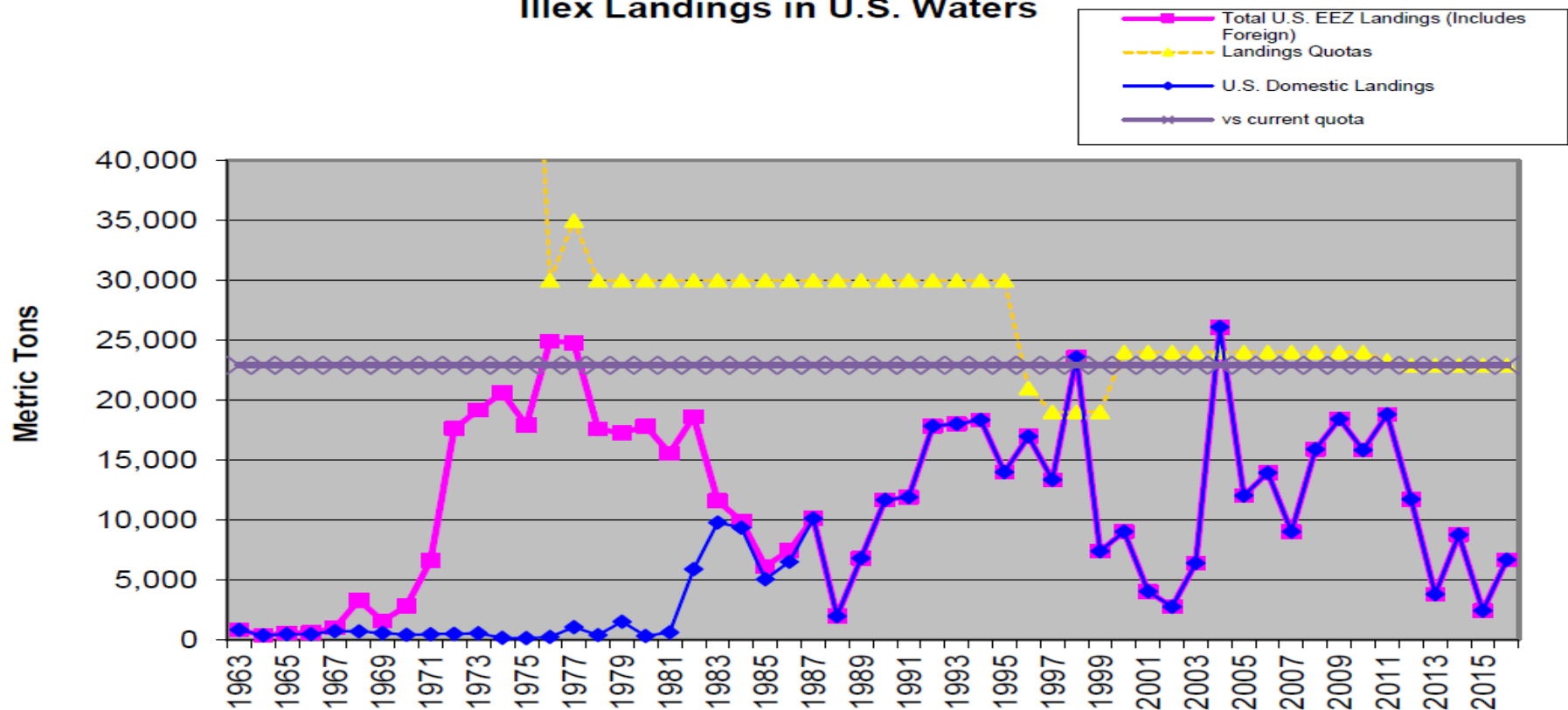


Figure 7. *Illex* squid landings in NAFO Subareas 5 and 6, between the Gulf of Maine and Cape Hatteras, NC during 1963-2016.

Mackerel Vessel Participation

YEAR	Vessels 1 mil +	Vessels 100,000 1mil	Vessels 50,000 - 100,000	Vessels 10,000 - 50,000	Total
1998	9	16	6	39	70
1999	6	15	9	36	66
2000	5	3	0	26	34
2001	5	3	2	20	30
2002	12	3	1	22	38
2003	14	6	5	23	48
2004	18	6	1	14	39
2005	16	12	4	15	47
2006	21	12	5	10	48
2007	16	12	2	20	50
2008	15	5	1	17	38
2009	15	6	6	18	45
2010	10	9	2	13	34
2011	0	3	3	17	23
2012	3	9	1	9	22
2013	4	3	3	13	23
2014	6	5	1	13	25
2015	5	9	10	12	36
2016	3	16	7	26	52
2017	6	7	14	28	55

Numbers of vessels making annual landings in different poundage ranges

Illex Vessel Participation

YEAR	Vessels 500,000+	Vessels 100,000 - 500,000	Vessels 50,000 - 100,000	Vessels 10,000 - 50,000	Total
1998	25	4	1	3	33
1999	6	9	2	10	27
2000	7	7	0	2	16
2001	3	4	1	2	10
2002	2	3	1	1	7
2003	5	6	1	2	14
2004	23	5	2	0	30
2005	10	10	2	2	24
2006	9	8	1	2	20
2007	8	2	1	0	11
2008	12	4	0	0	16
2009	10	3	1	1	15
2010	12	3	0	6	21
2011	17	4	2	0	23
2012	8	3	2	2	15
2013	5	4	3	5	17
2014	5	3	2	2	12
2015	3	0	1	1	5
2016	4	3	3	2	12
2017	14	6	0	0	20

Numbers of vessels making annual landings in different poundage ranges

Longfin Vessel Participation

YEAR	Vessels 500,000+	Vessels 100,000 - 500,000	Vessels 50,000 - 100,000	Vessels 10,000 - 50,000	Total
1998	18	86	46	91	241
1999	18	85	36	119	258
2000	13	96	46	97	252
2001	12	65	44	84	205
2002	13	90	32	69	204
2003	8	64	25	59	156
2004	15	63	27	52	157
2005	19	62	19	46	146
2006	16	76	24	47	163
2007	16	44	30	68	158
2008	10	58	18	78	164
2009	8	52	26	64	150
2010	3	45	22	65	135
2011	7	55	32	46	140
2012	8	75	38	41	162
2013	10	56	20	37	123
2014	12	60	27	55	154
2015	13	49	21	50	133
2016	19	74	35	46	174
2017	2	51	38	56	147

Numbers of vessels making annual landings in different poundage ranges

Butterfish Vessel Participation

YEAR	Vessels 200,000+	Vessels 50,000 - 200,000	Vessels 10,000 - 50,000	Vessels 1,000 - 10,000	Total
1998	2	14	69	153	238
1999	2	10	72	143	227
2000	1	9	54	159	223
2001	4	6	72	130	212
2002	0	3	46	123	172
2003	0	0	20	115	135
2004	0	0	23	95	118
2005	0	1	11	90	102
2006	0	1	24	86	111
2007	0	3	36	95	134
2008	0	1	22	99	122
2009	0	2	17	83	102
2010	0	1	37	81	119
2011	0	2	36	92	130
2012	0	1	38	87	126
2013	1	1	46	82	130
2014	2	4	47	77	130
2015	3	6	36	83	128
2016	2	9	39	81	131
2017	3	7	51	67	128

Numbers of vessels making annual landings in different poundage ranges

Biggest Vessels (top 100 of 4343)

Size (meters) of 100 largest permitted vessels

