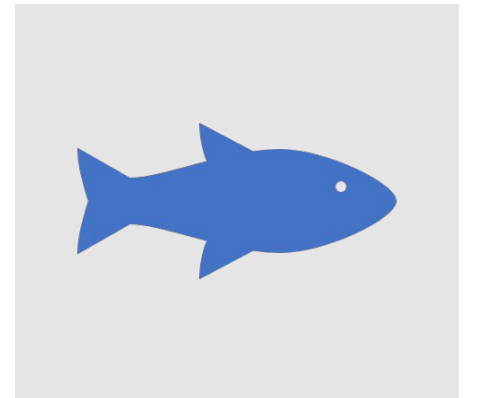


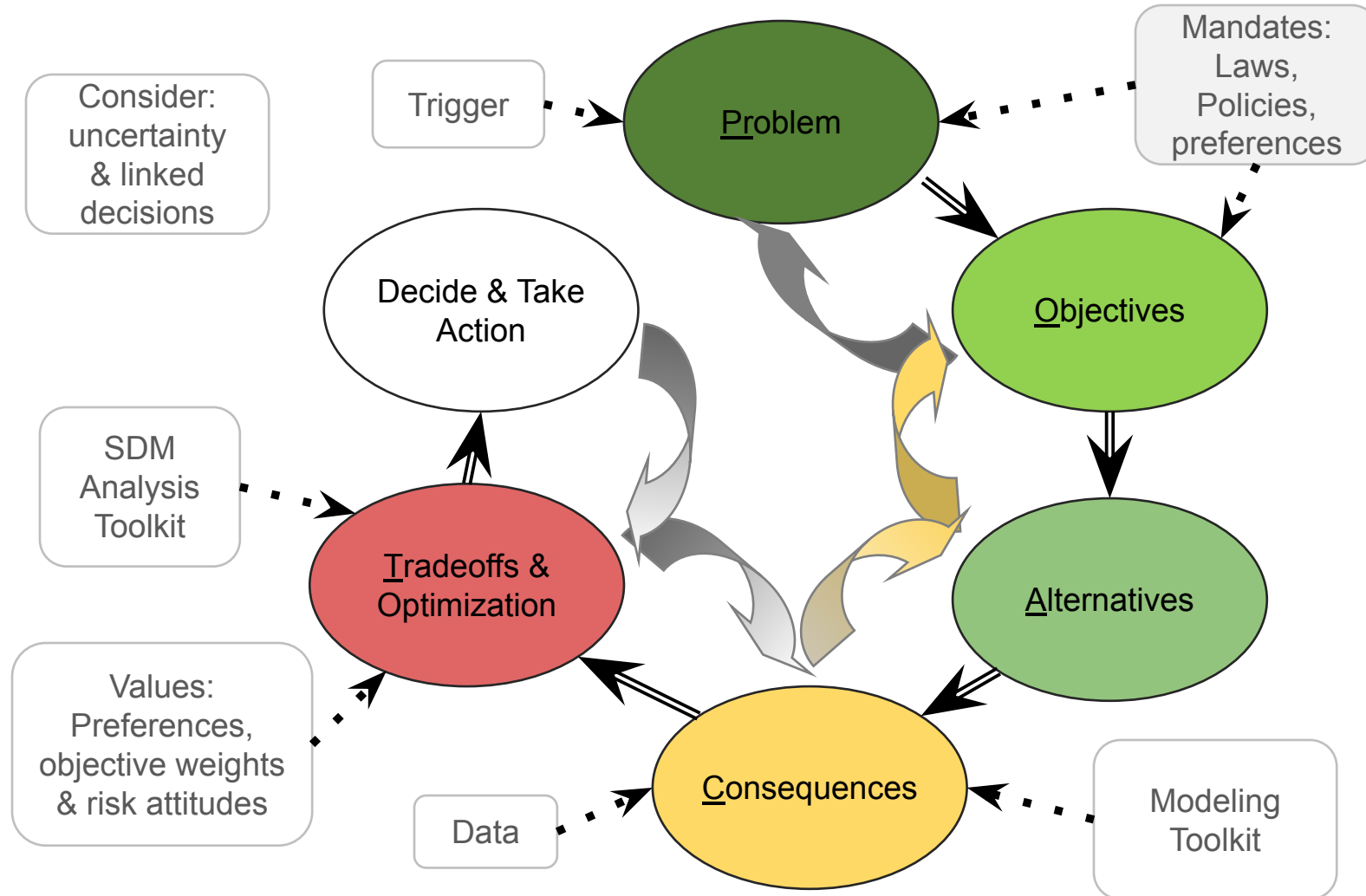
Supporting the Future of the Summer Flounder Fishery



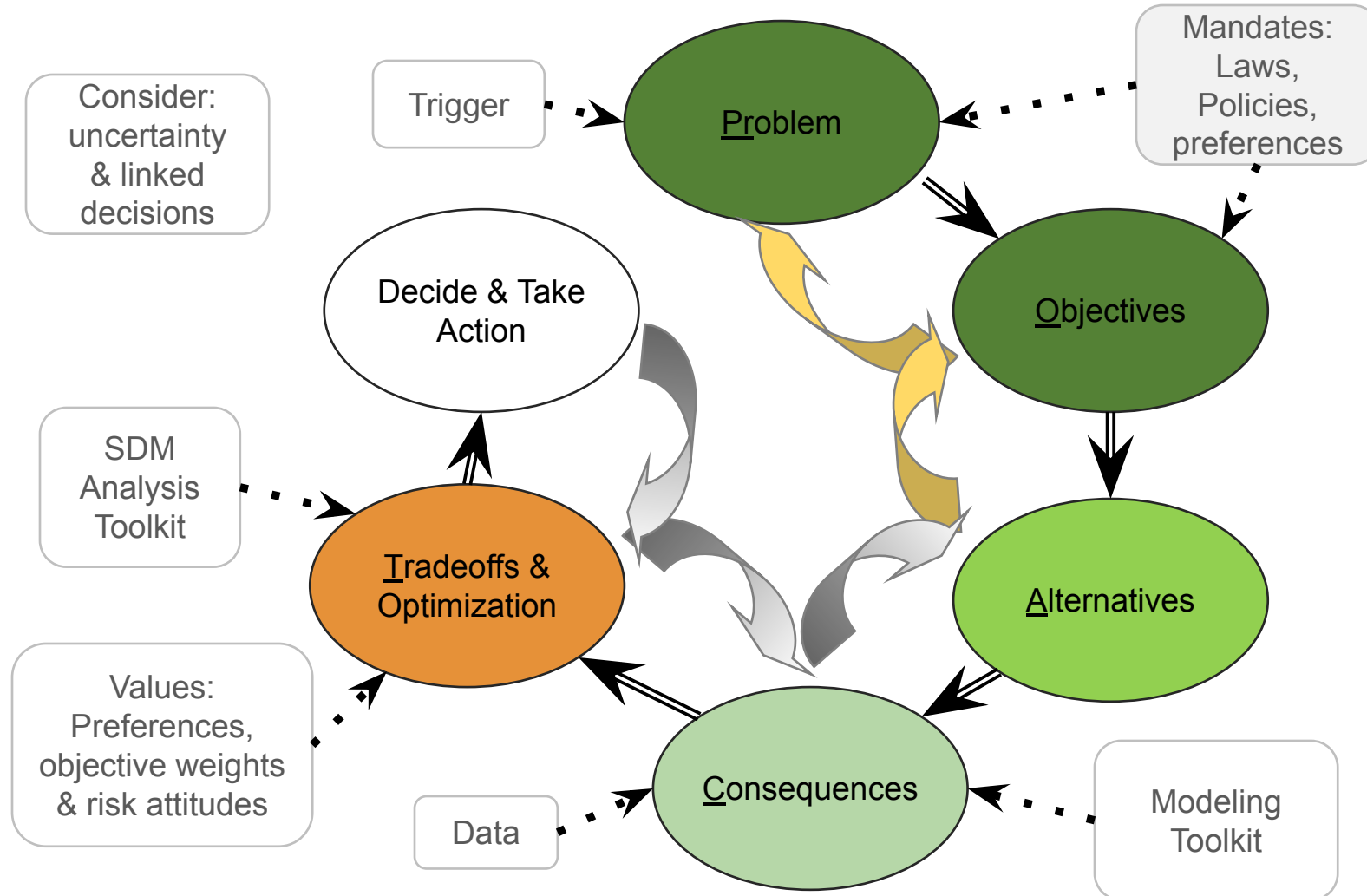
Workshop 2

Process Check-in

Where we are



Where we're going



Our Vision –

Proactive, hopeful approach
to address opportunities
and risks

Co-development of fishery management
strategies via...

Structured Decision Making &
Management Strategy Evaluation...

A participatory, facilitated process to:

- define our **goal** for the process
- define **management decisions**
- identify **objectives** to consider
- suggest **management strategies**
- specify **model components**
- evaluate **trade-offs** between
objectives



Process

Expectations – Quoted from the Agenda document

- **Inquiry-based process**
 - **Cooperative process**
 - **Evidence based results**
-
- Management strategy evaluation is more of an **inquiry-based process**, one of imagining the world as we would like it to be and exploring ways to get there.
 - The process will be more effective if we all come into it with an open mind to **exploring the set of possibilities**, **helping each other to ask and answer these what if questions** and **letting the model** of the system we create together **inform the outcomes** of those possibilities.
 - the intent of the process is to **inform decision making rather than to produce a decision**
 - *Impartial Dialogue*: **We will not pursue a preconceived outcome**. At the outset, all outcomes are on the table. We will **explore possible outcomes or decisions without advocacy**, **letting the process reveal the strategies that achieve our objectives**.

Products

- A set of objectives for the fishery and their importance
- Identify the relative performance of proposed management strategies
 - May identify a recommended strategy

Process

Addressing Differences of Opinion

1. Seek consensus
2. Proceed along multiple paths
 1. Explore 2 or more sets of inputs
 - Objectives
 - Models
 2. Prototyping & parking lot
 - Start simple
 - Expand as time permits
3. Facilitator decision – **speak to me**
 - Parking lot
 - Documented in notes and report
5. Working Group decision
 - Modeling team
 - Council representation
6. Council decision

Workshop 2 interaction

Webex

- If possible, camera on please
- Raise hand to speak
- or type comments and questions in the chat
- Message Brandon with technical issues

Miro

- Webex for dialogue
- Miro for requested feedback
- Message Jonathan with technical issues

Notes

- Kaili and Annabelle will lead
 - You may contribute to the notes
 - [Link to Summer Flounder MSE Notes](#)

Resources

Brandon: bmuffley@mafmc.org

Jonathan: jonathan.cummings@gmail.com

Books: Smart Choices and Give Yourself a Nudge

MAFMC Website: <https://www.mafmc.org/actions/summer-flounder-mse>

Google Drive:

Core Group Folder: [Link to Core Group Folder \(Google Drive\)](#)

Agenda: [Link to Agenda](#)

Notes: [Link to Summer Flounder MSE Notes](#)