



SSC - *Longfin*

May 2021

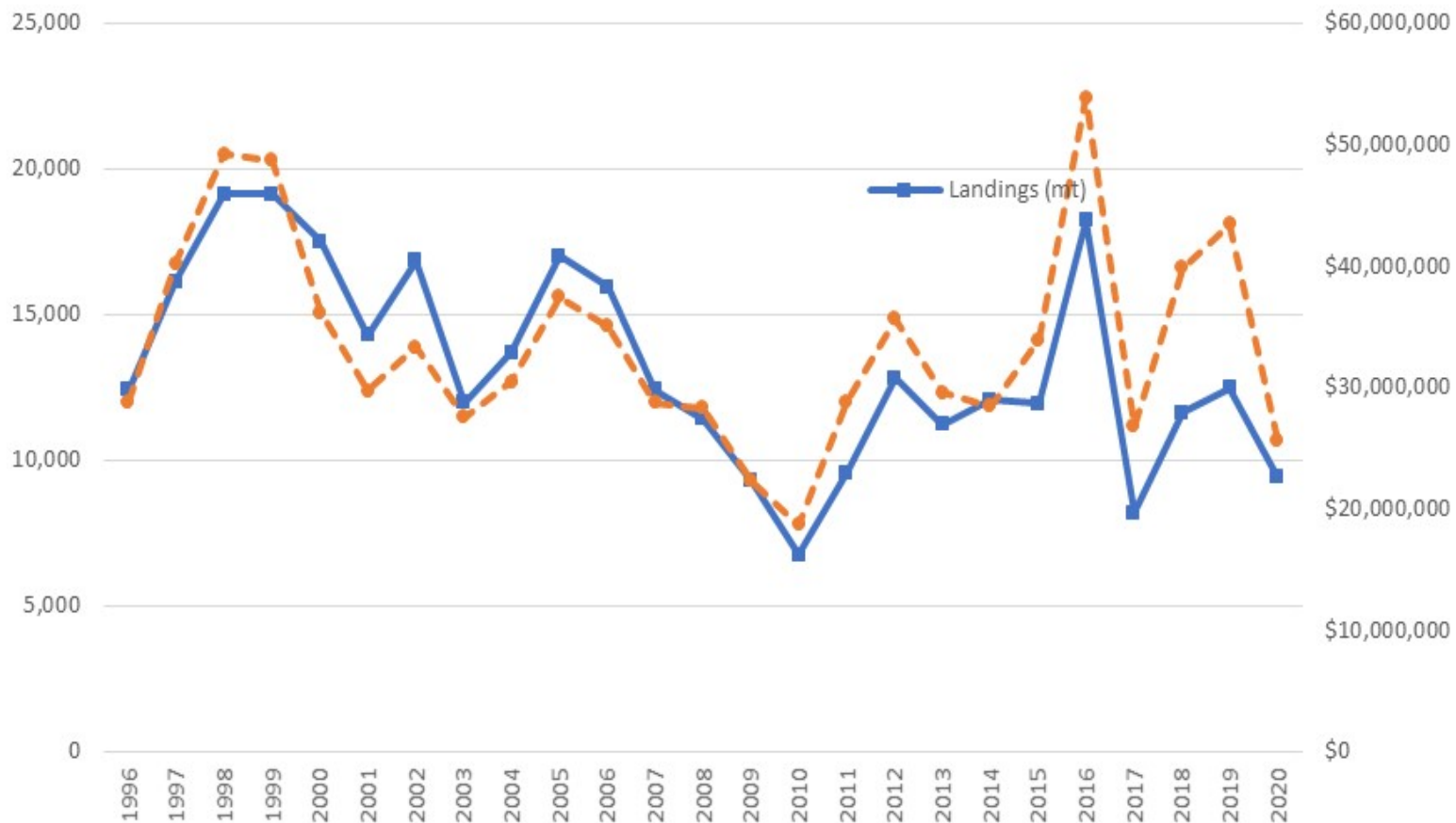
Longfin

ABC = 23,400 MT for 2021-2023

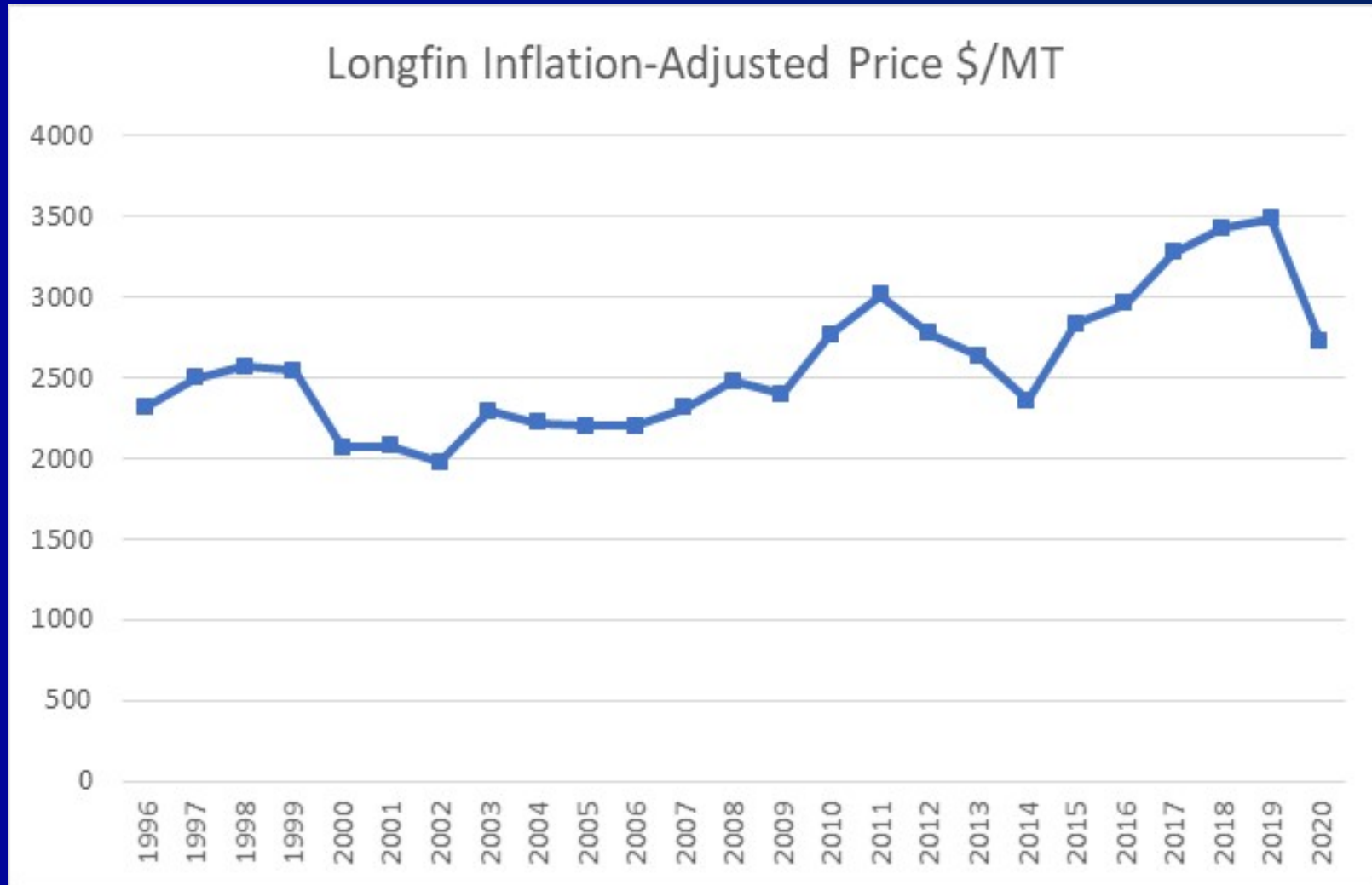
Review, can change if warranted

From Fishery Info Doc

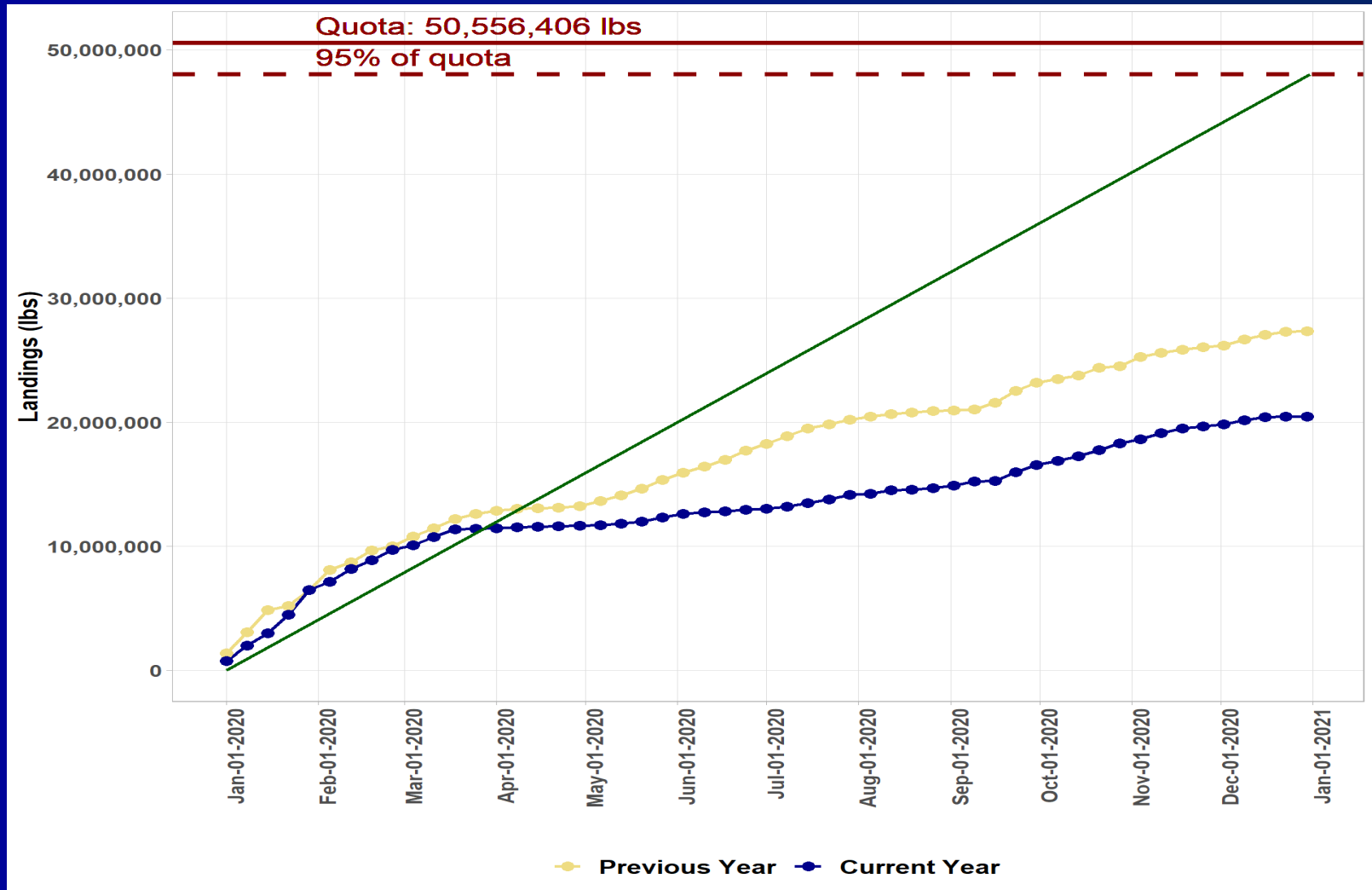
Longfin Landings (MT, left and solid blue line) and Ex-Vessel Revenues (2020 dollars, right and dashed orange line) 1996-2020



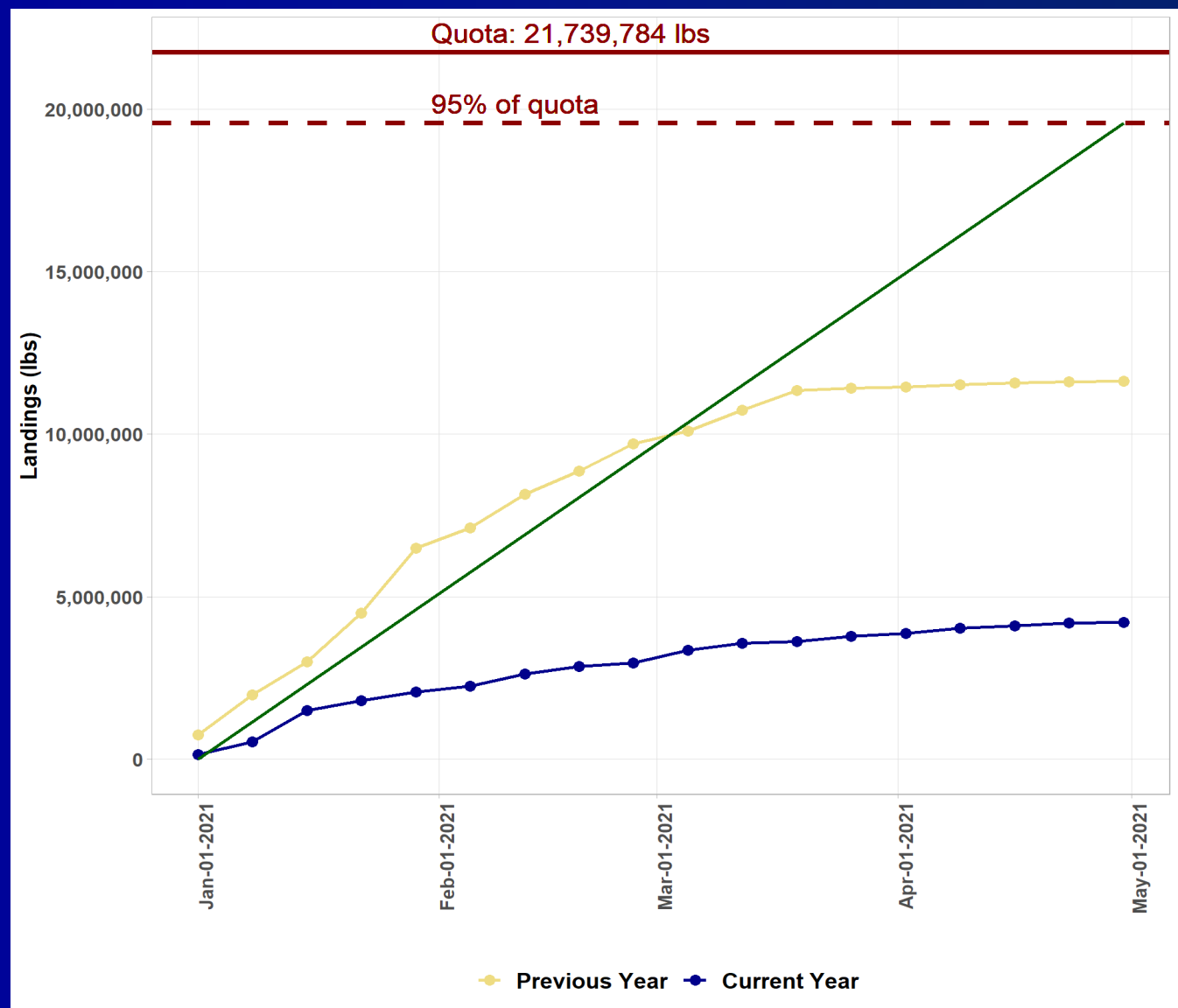
From Fishery Info Doc



From Fishery Info Doc 2019-20



From Fishery Info Doc 2020-21 T1



Longfin - FPR

- Restaurant closures/traffic dramatically affect longfin demand/prices.
- Some mitigating retail sales.
- Shipping/transport issues.

Staff Recommendations

- Staff recommends no changes to the previously-recommended 2022 ABC