



# **SSC - Butterfish**

*May 2021*

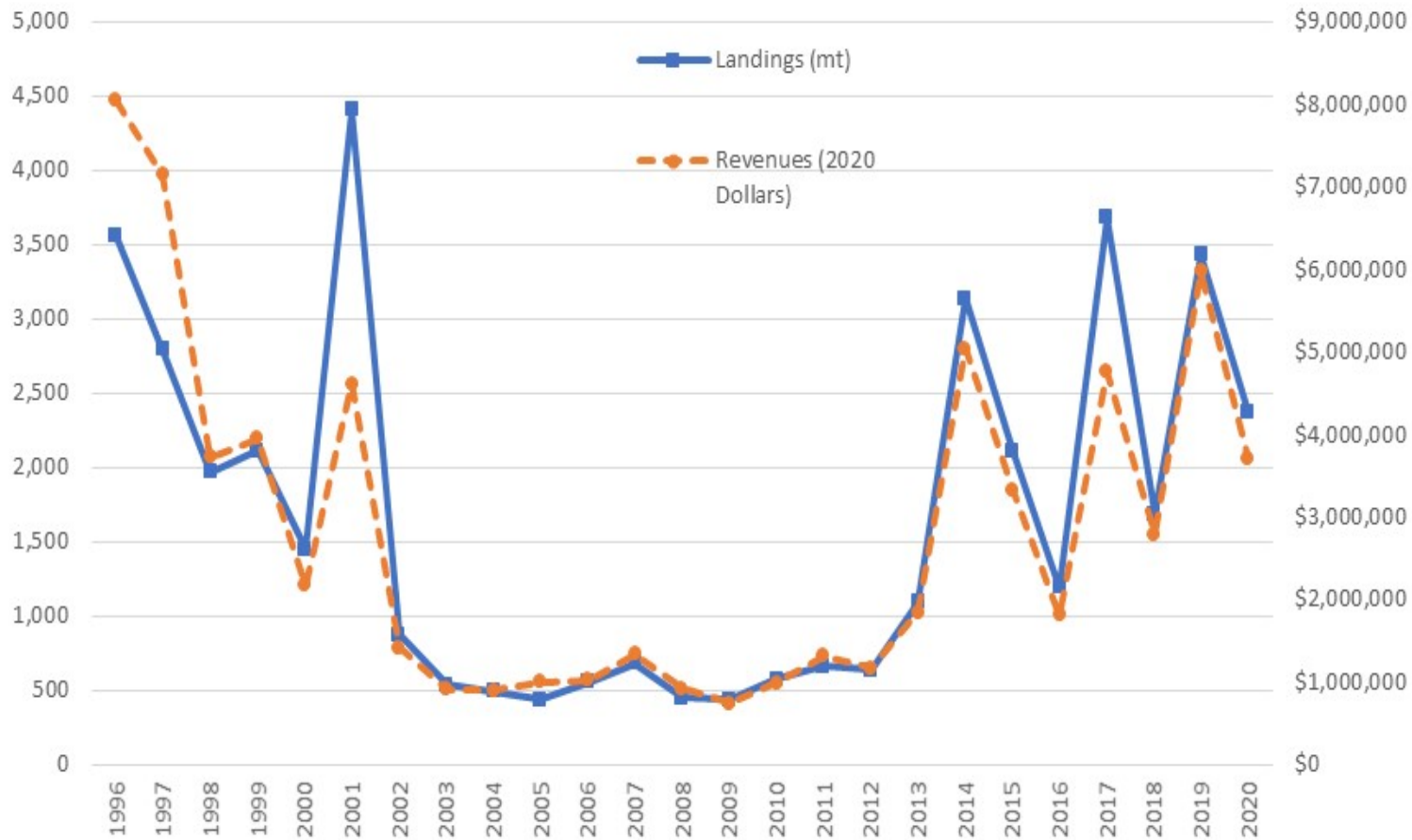
# Longfin

ABC is projected to increase from 11,993 metric tons (MT) in 2021 to 17,854 MT in 2022 (P\* projection)

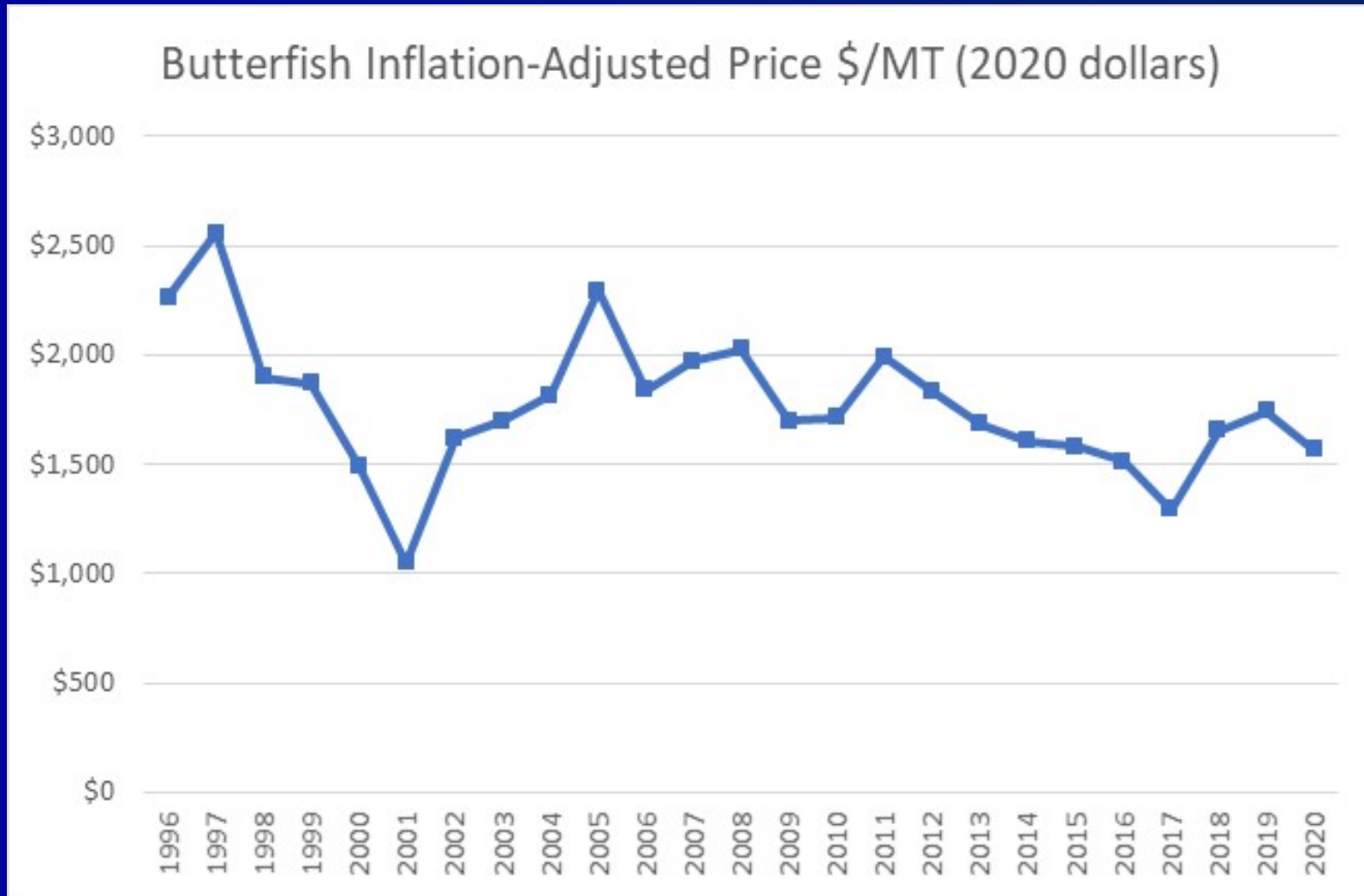
Review, can change if warranted

# From Fishery Info Doc

Butterfish Landings (MT, left and solid blue line) and Ex-Vessel Revenues (2020 dollars, right and dashed orange line) 1996-2020



# From Fishery Info Doc



# Butterfish - FPR

- 2020 butterfish demand was mostly status quo outside of Covid
- There's still limited interest in this fishery
- Dogfish abundance has been an issue for the directed fishery

# Staff Recommendations

- Staff recommends no changes to the previously-recommended 2022 ABC