



***SSC***  
***Longfin Squid***

*July 2020*

# Overview

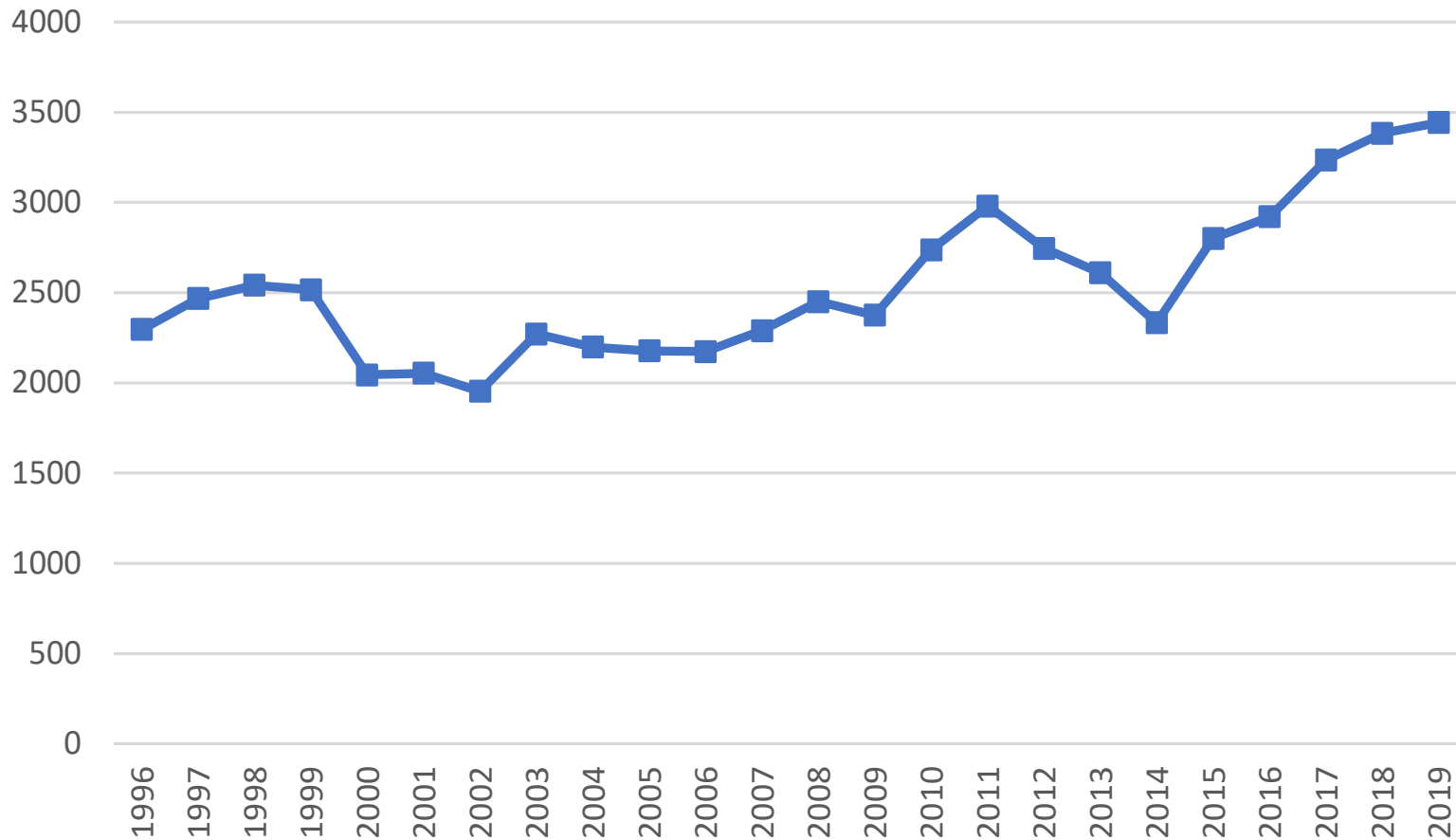
- Center/Assessment
- Current Specifications
- Info Doc Highlights
- FPR Highlights
- Staff recommendation

# Current Specifications

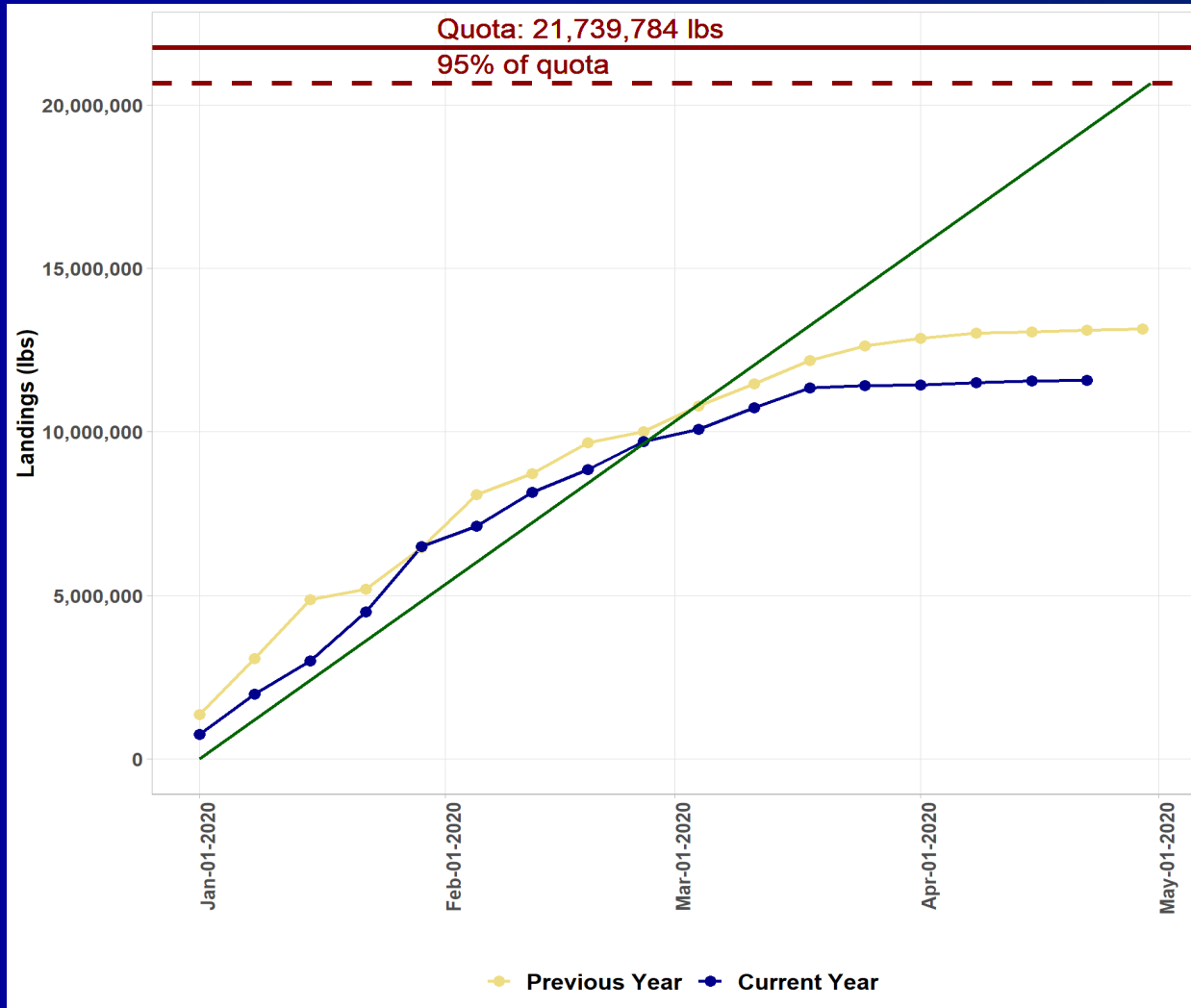
- ABC is 23,400 MT, with a commercial quota of 22,932 MT (discards)
  - Catch in the year of the highest exploitation ratio (1993) from the 2010 longfin squid benchmark assessment. (since 1987)  
[Now 23,950 (revised discards)]
- 4-month Trimesters - 43% (Jan-Apr), 17% (May-Aug), and 40% (Sept-Dec)
  - Rollover

# Info Doc Highlights

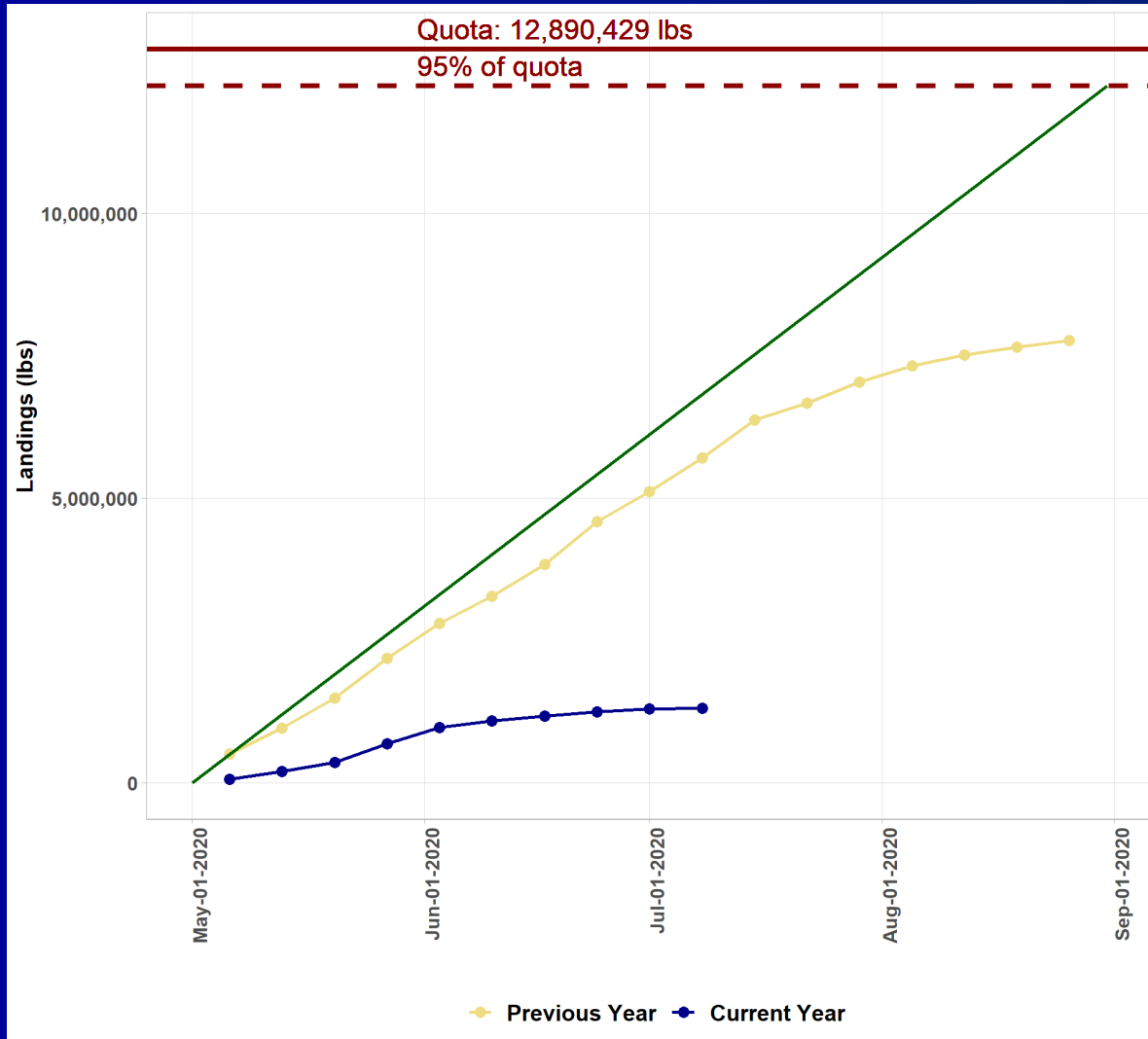
Longfin Inflation-Adjusted Price \$/MT



# Info Doc Highlights



# Info Doc Highlights



# FPR Highlights

- Shifting thermal habitat
- Tariffs
- Regulation limitations
- COVID-19 affecting everything in current year
- Demand good through 2019

# Staff Recommendation

- Staff supports continued development of sub-annual assessment/management approaches to longfin squid, but at this time recommends the current annual longfin squid ABC of 23,400 MT for 2021-2023.
  - Lots of noise (biomass or landings)
  - Peak catches 31,000 MT – 39,000 MT 1972-1975