



# Butterfish

*SSC - May 2023*

# Butterfish Specifications

ABC is projected to decrease from 17,267 metric tons (MT) in 2023 to 15,764 MT in 2024 (P\* projection)

2024 review, change if warranted

# Butterfish Specifications

Table 1. Preferred 2023-2024 Butterfish Specifications

	Specification	2023	2024	Rationale Summary
	OFL	17,631	16,096	from projections
a	ABC	17,267	15,764	from SSC, scientific uncertainty
b	ACT Buffer %	5%	5%	for management uncertainty
c	ACT Buffer	863	788	a times b
d	ACT (a-c)	16,404	14,976	a-c
e	Butterfish Cap (longfin discards)	3,884	3,884	set by Council
f	Assumed other discards	1,248	1,248	2013-2021 average plus 1 SD
g	Total discard set-aside	5,132	5,132	e+f
h	Landings or "Domestic Annual Harvest" (DAH)	11,271	9,844	d-g
i	Close primary directed at this amount, i.e. with 1,000 mt left; go to 5,000 pound trip limit	10,271	8,844	h-1000

# Butterfish Biomass to 2021

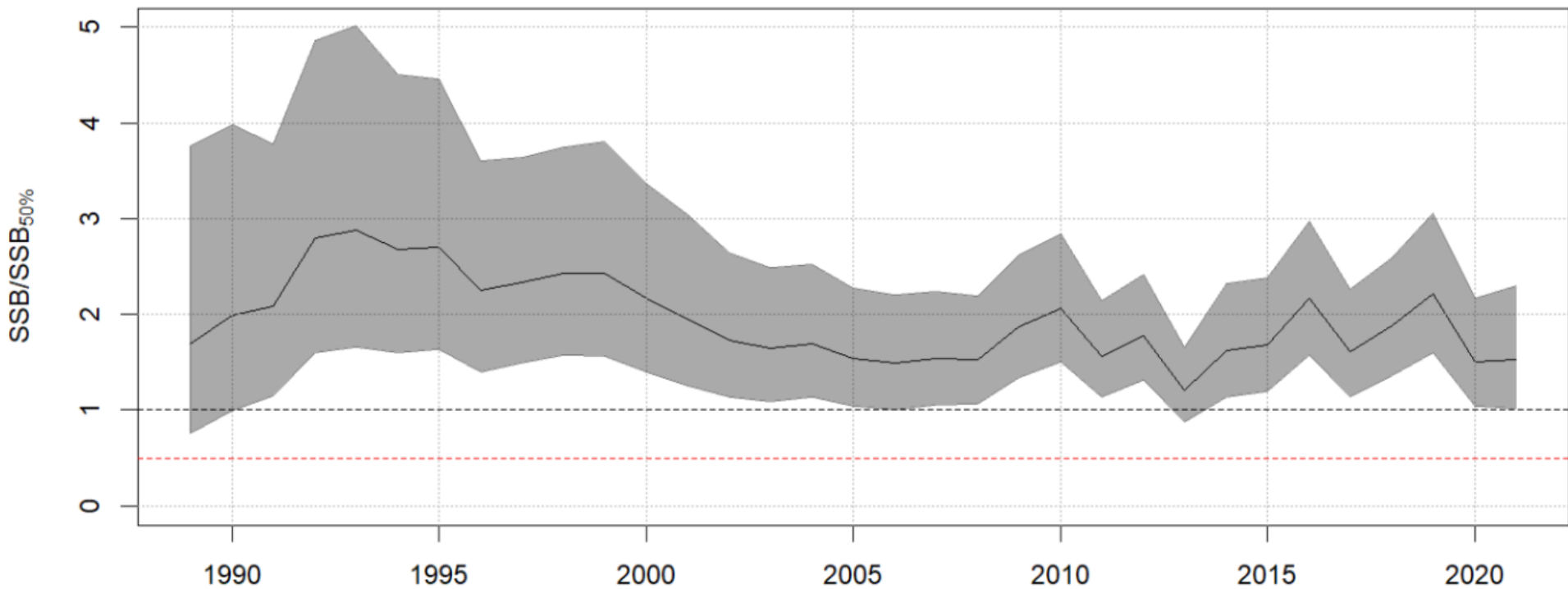
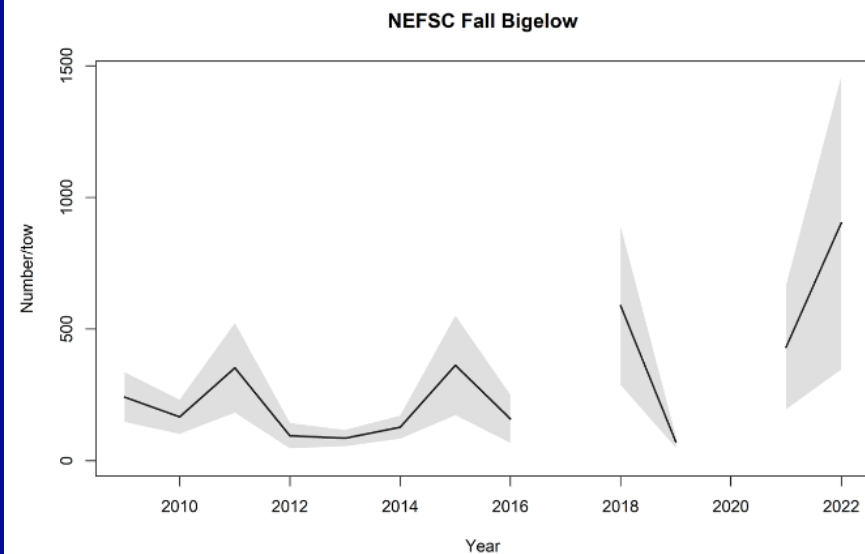
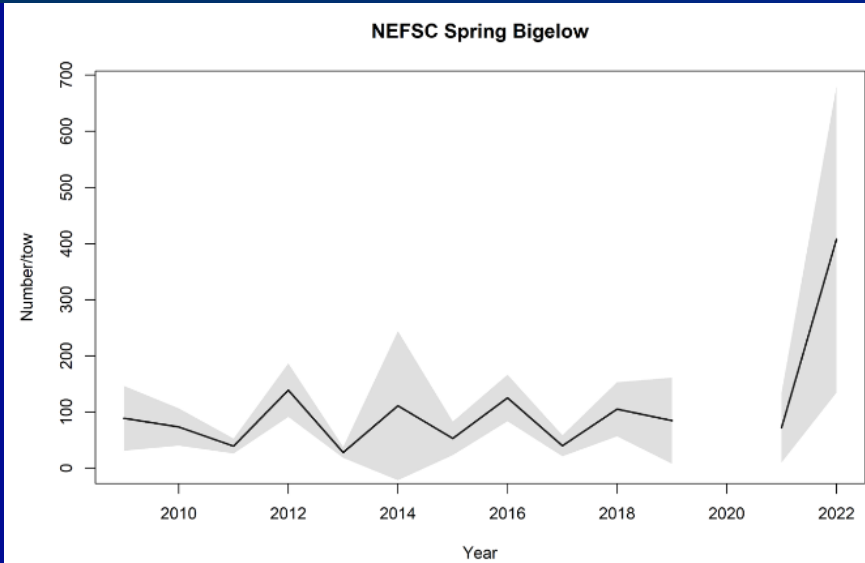
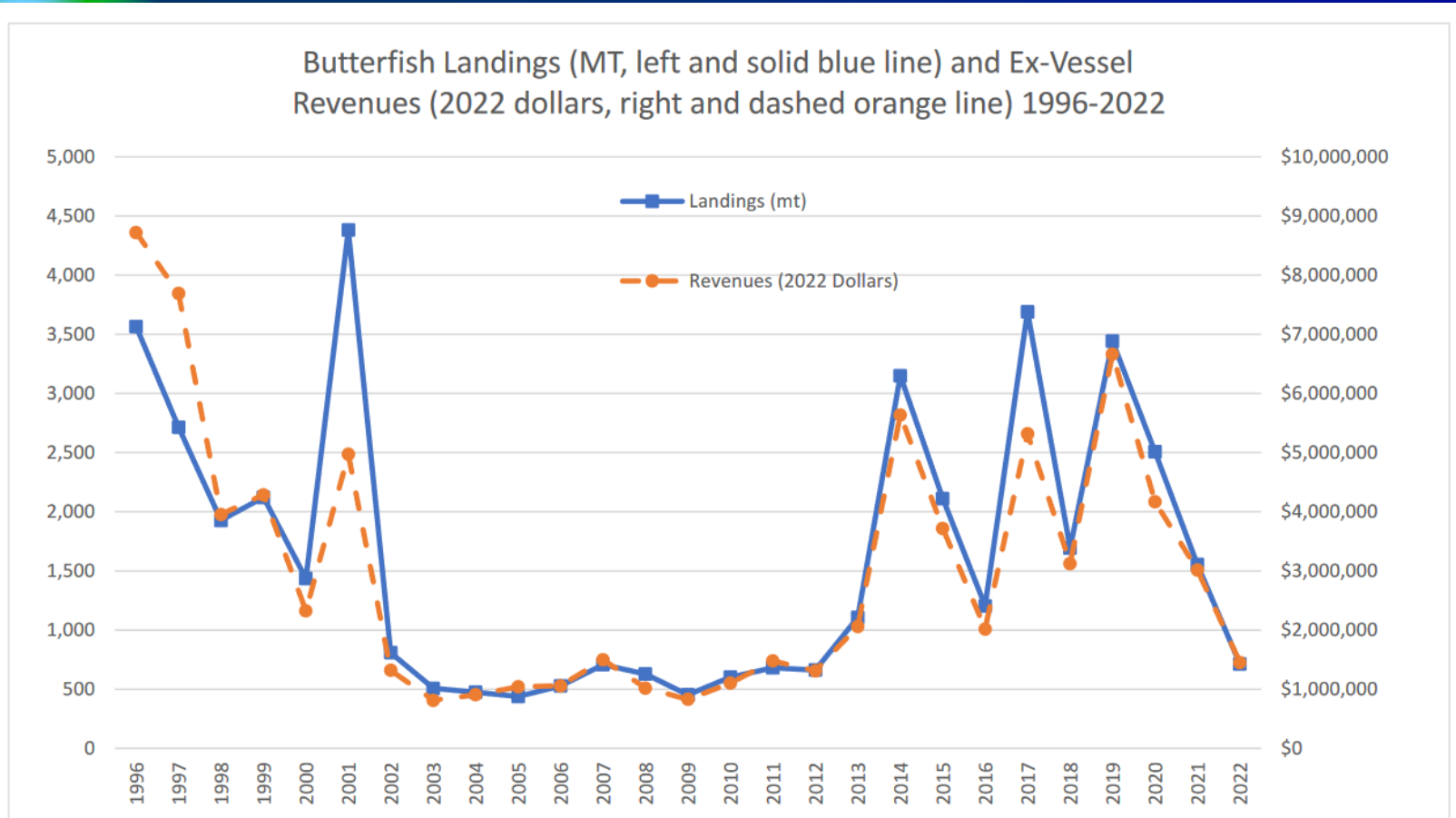


Figure 1. Butterfish stock status, 1989–2021, relative to the current biological reference points, biomass target = “1” or 39,436 MT (upper horizontal dashed line) and overfished threshold = 0.5 or 19,718 MT (lower horizontal dashed line).

# Butterfish Survey to 2022

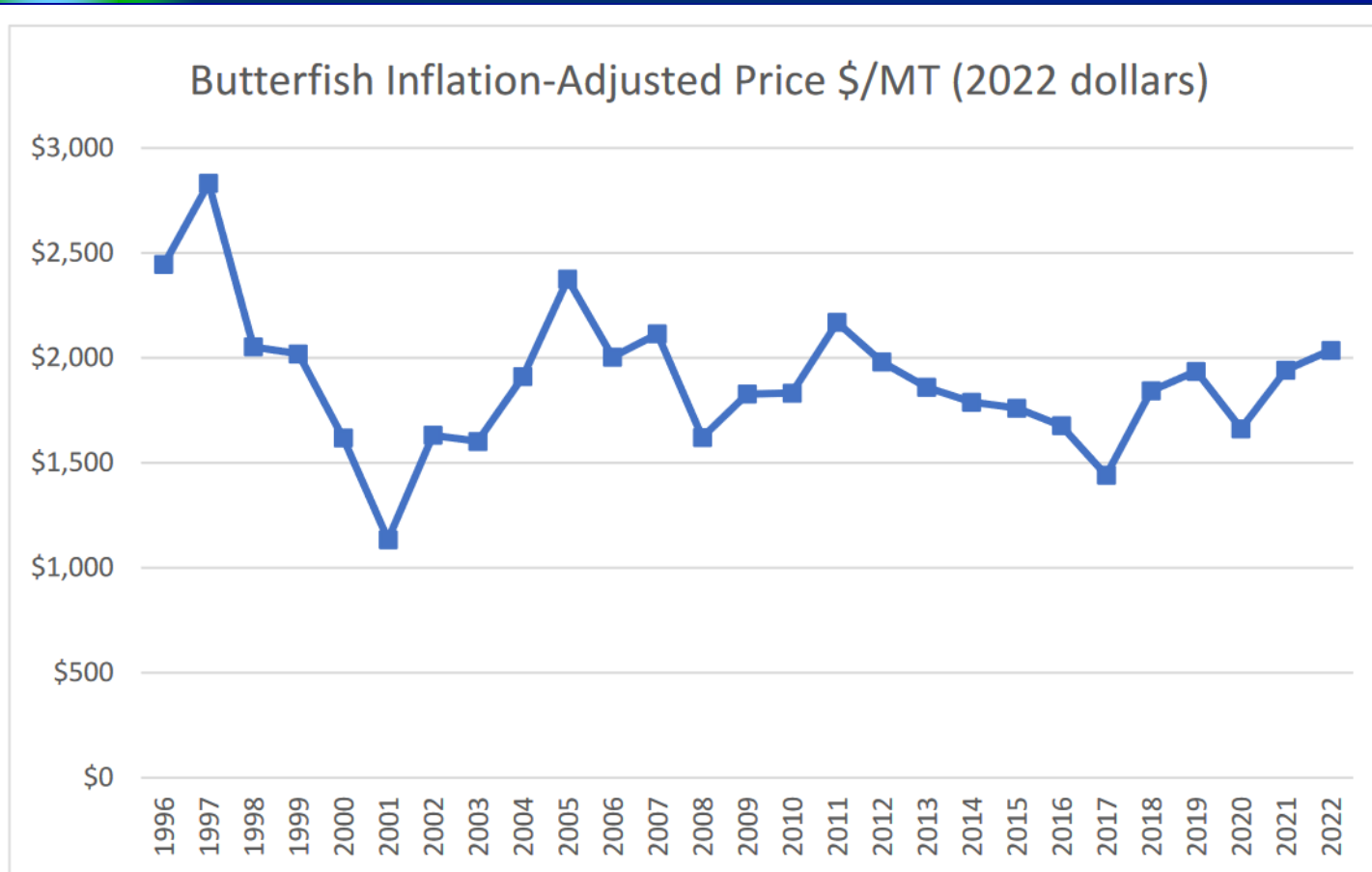


# From Fishery Info Doc



**Figure 3.** U.S. Butterfish Landings and Butterfish Ex-Vessel Values 1996-2022. Source: NMFS unpublished dealer data.

# From Fishery Info Doc



**Figure 4.** Ex-Vessel Butterfish Prices 1996-2022 Adjusted to 2022 Dollars Source: NMFS unpublished dealer data.

# Butterfish - FPR

- 2021 and especially 2022: better fishery for longfin squid than butterfish
- Good early 2023 till fish had “feed”
- Less shipping issues
- Same research priorities
- Ecosystem concerns
- Reference point concerns
- Various management concerns



# Staff Recommendations

- Maintain the planned 2024 specifications

# Butterfish Specifications

- Questions?
- (No action needed)