



Atlantic Chub Mackerel

2023-2025 ABC

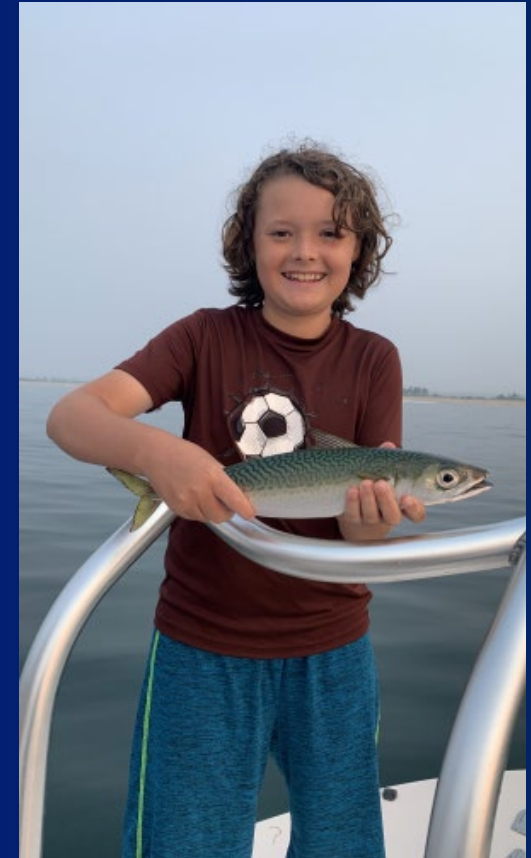


SSC Meeting

May 11, 2022

Meeting Objective

- Review
 - Management history
 - Recent fishery information
 - AP Fishery Performance Report
- Recommend 2023-2025 ABCs



Jason Didden

Management

- First measures implemented through Unmanaged Forage Amendment (effective Sept 2017).
- Amendment 21 to MSB FMP.
 - Effective Sept 2020.
 - ABC, ACL, ACT, TAL.
 - Vessel (commercial and party/charter), and dealer permit and reporting requirements.
 - Commercial possession limits only after 90% and 100% of TAL projected to be landed.
 - No recreational possession limit.
 - No commercial or recreational fish size, gear, or season restrictions.

Previous ABC Recommendation

- Insufficient info exists to assess status and trends in NW Atlantic.
- OFL cannot be specified.
- $ABC = 2,300 \text{ MT} = 5.07 \text{ mil lb.}$
 - Based on expert judgement.
 - Based loosely on historic high for landings and assumptions about discards.
 - Prevents fishery from reaching historic high, but allows higher catch than in all other years.
 - Unlikely to result in overfishing given general productivity of species worldwide combined with low fishery capacity in this region.
- ME-FL catch applies to ABC.
- Reviewed in 2020 and 2021. No changes recommended.

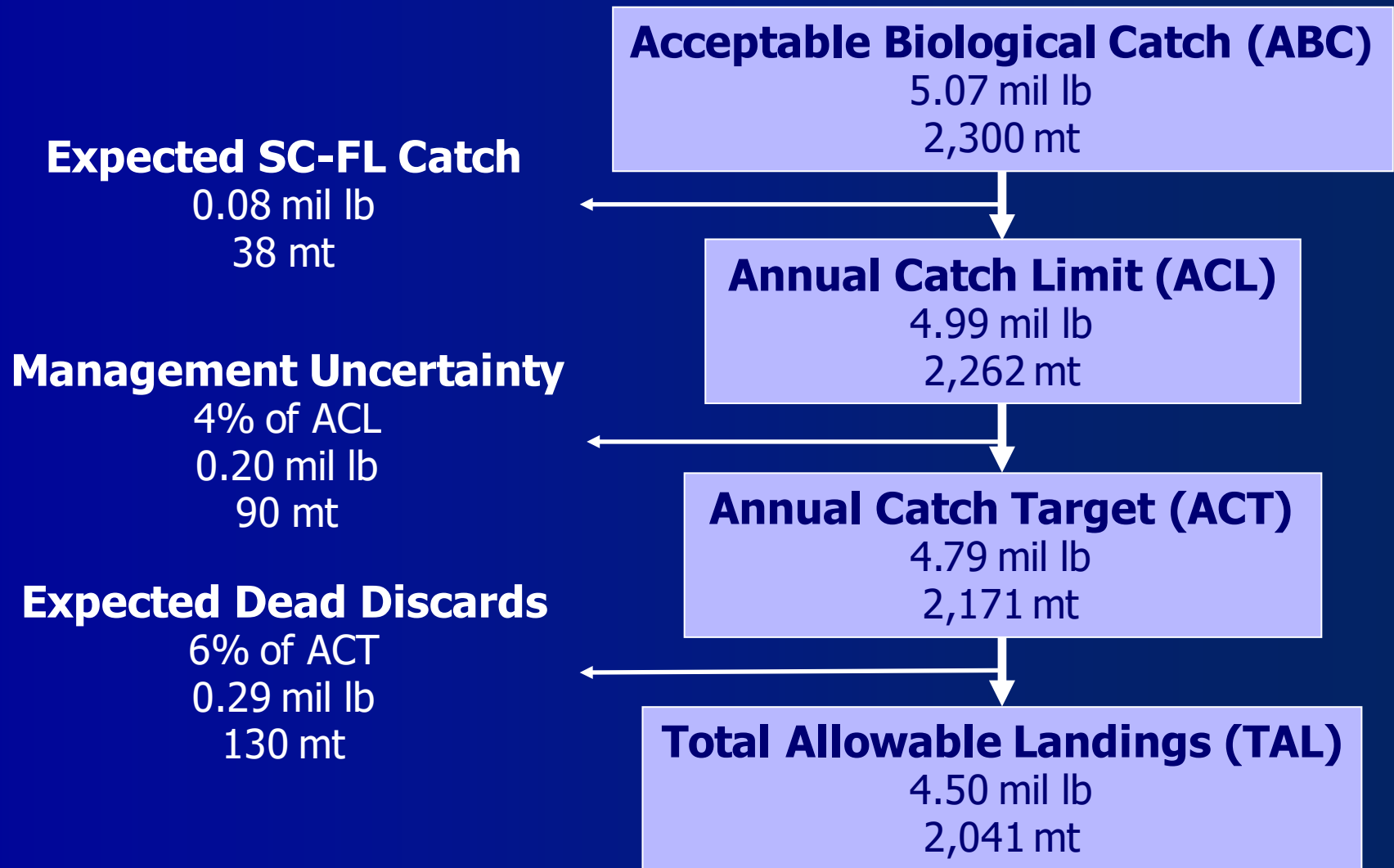
Other Previous SSC Input

- Much additional data needed.
 - More intensive monitoring of landings for size and age comps (see Leaf 2020, Daley and Leaf 2019 in supplemental materials).
- Consider relevance of fisheries in other areas, including closely related *Scomber japonicus*.
 - See other supplemental briefing materials.

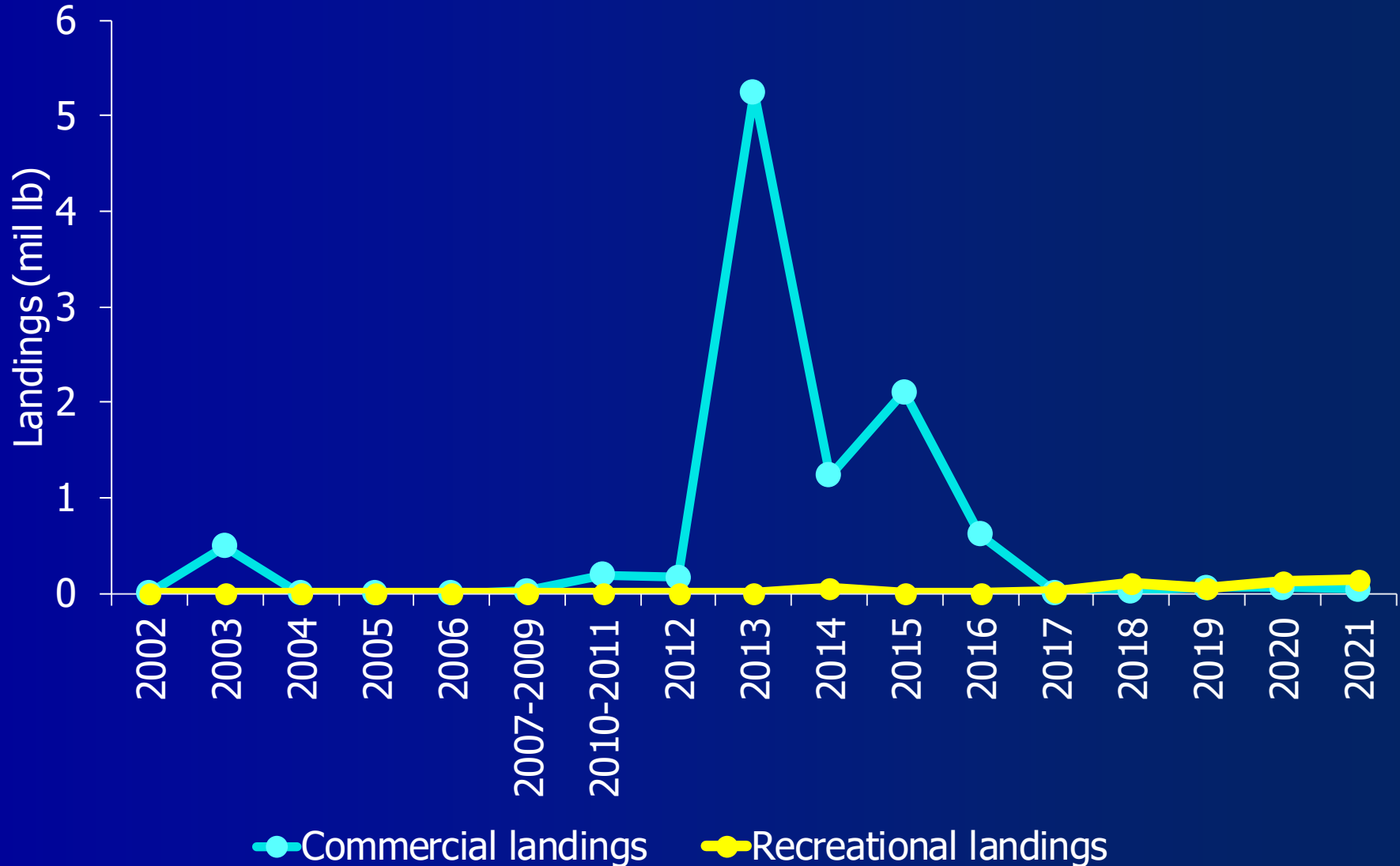


Robert Leaf

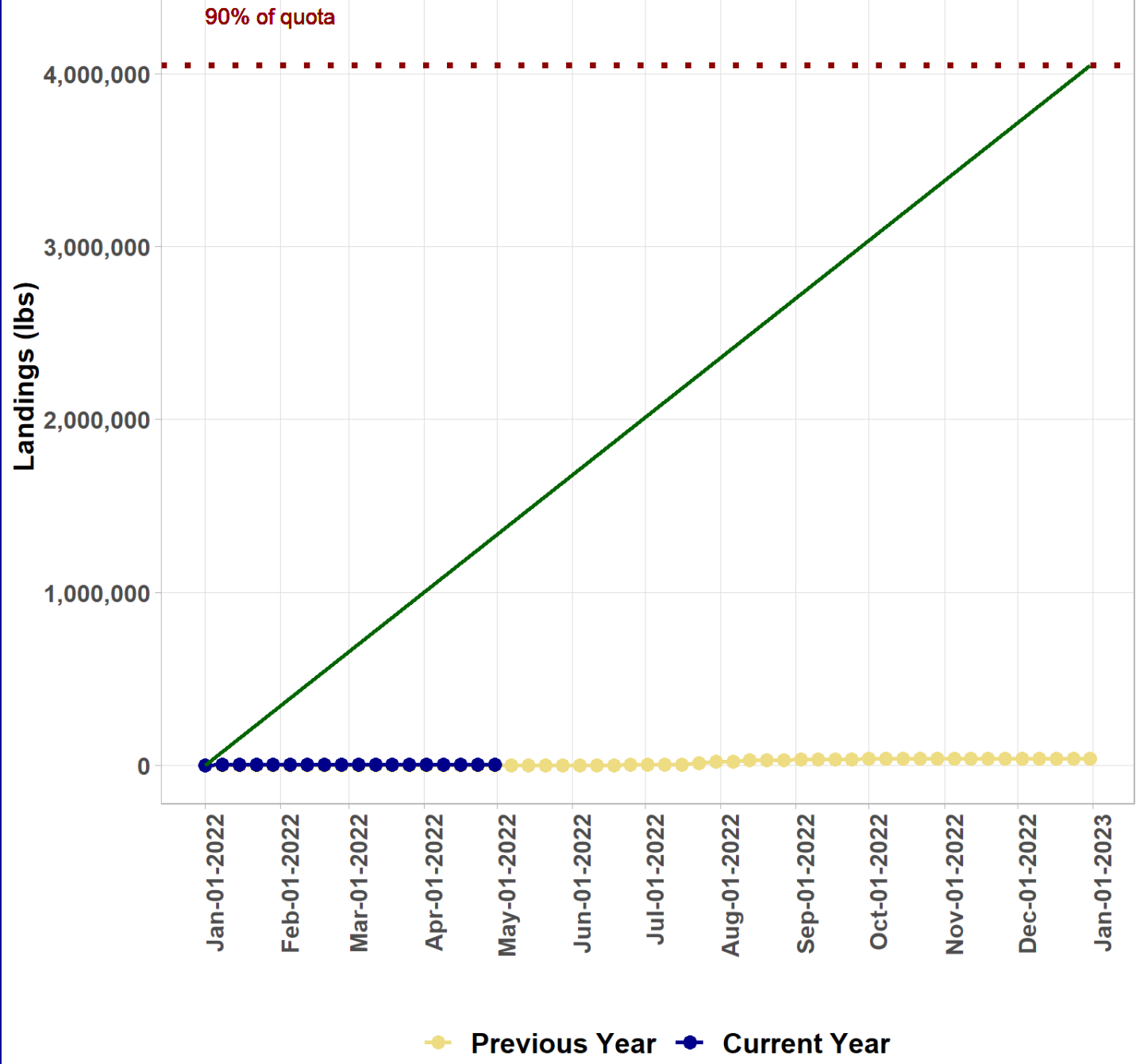
2020-2022 Specifications



Com. & Rec. Landings



Quota: 4,499,486 lbs



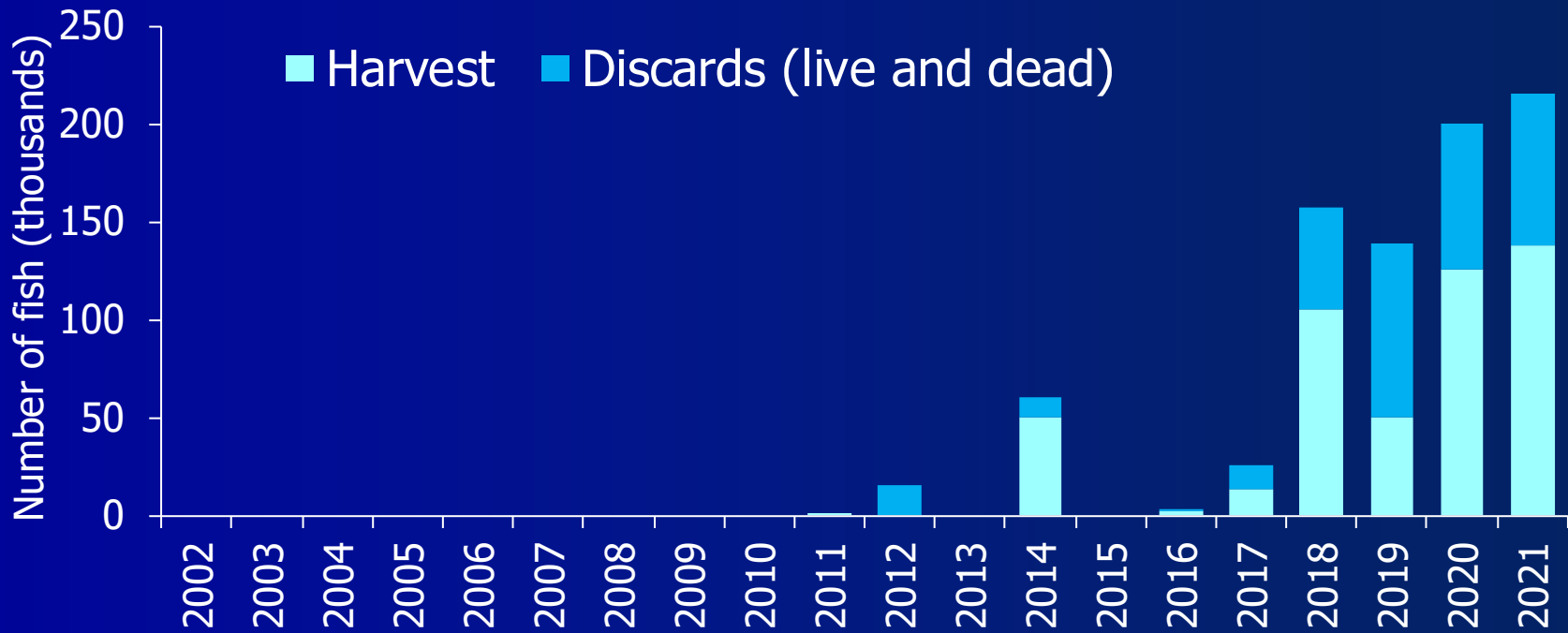
Commercial Fishery

- Overlap with *Illex* squid fishery
 - Vessels, time of year, area
 - “Bailout” species/alternative fishery
- 95% of com. landings over past 20 years from fewer than 5 vessels, fewer than 3 dealers
- 91% landings from bottom trawl, 9% from midwater trawls (fed VTRs)
- 97% landings from June-October
- \$0.53/lb on avg, 2002-2021 (adjusted to 2021 \$)



Recreational Fishery

- On avg. 2017-2021:
 - 56% harvest from state waters, 44% federal.
 - Most harvest in NY (42%), RI (28%), NJ (18%), CT (8%).
 - 57% private/rental, 38% party/charter, 5% shore.
 - Most harvest July-Aug (57%), Sept-Oct (40%).



AP Fishery Performance Report

- Commercial fleet has not targeted chub mackerel in recent years. Focusing on Illex.
- Increasing recreational catch likely due to increased availability with warming waters.



Lund's Fisheries

AP Fishery Performance Report

- No changes recommended to any mgmt. measures for 2023.
- No data to suggest changes are needed. Hopefully can have more data for next cycle of setting ABCs.
- Emerging fishery.
 - Mgmt is overly precautionary.
 - Should prioritize and support development of sustainable emerging fisheries.
 - Need to adapt to a changing environment.
- Recommend research on range of the species, especially regarding climate change.

Discussion

- Recommend 2023-2025 ABCs



Backup slides

NEFSC Trawl Survey

- 84 tows during fall survey caught chub mackerel, 1963-2019. No catches in spring survey.
- Stratified mean #/tow low with spike in 1996.
- Have become more prevalent since 2013.

