

Summer Flounder



SSC

July 23, 2014

Current multi-year specifications

- 2014-2015 specifications in place for summer flounder, scup, and black sea bass
- Review implemented 2015 specifications
 - Recommend changes if necessary





Stock Status

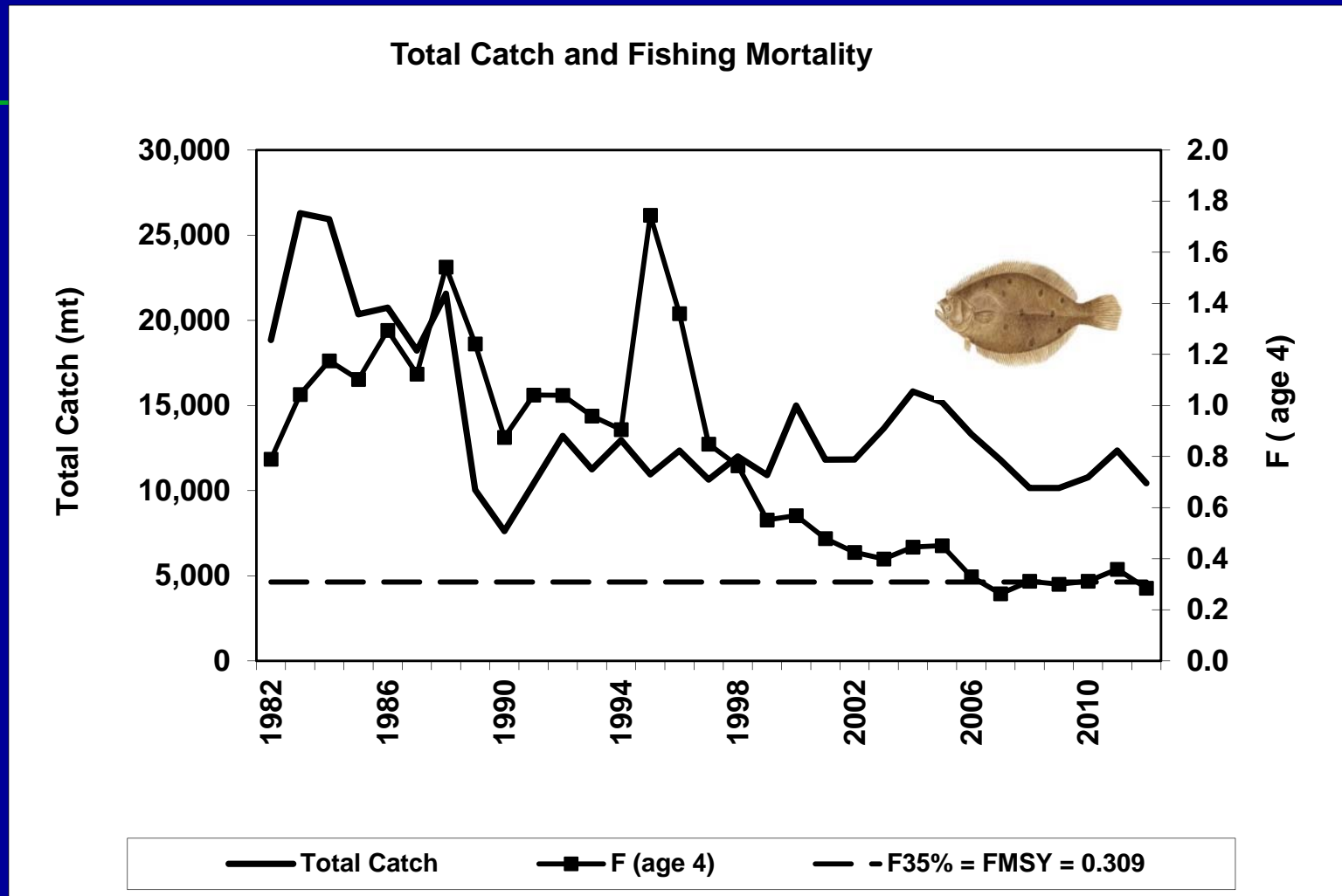
- 2013 benchmark stock assessment
 - SAW/SARC 57
 - age-structured assessment program (ASAP)
- Not overfished and overfishing not occurring in 2012
- 2014 data update (landings, discards, and survey indices)



Biological Reference Points

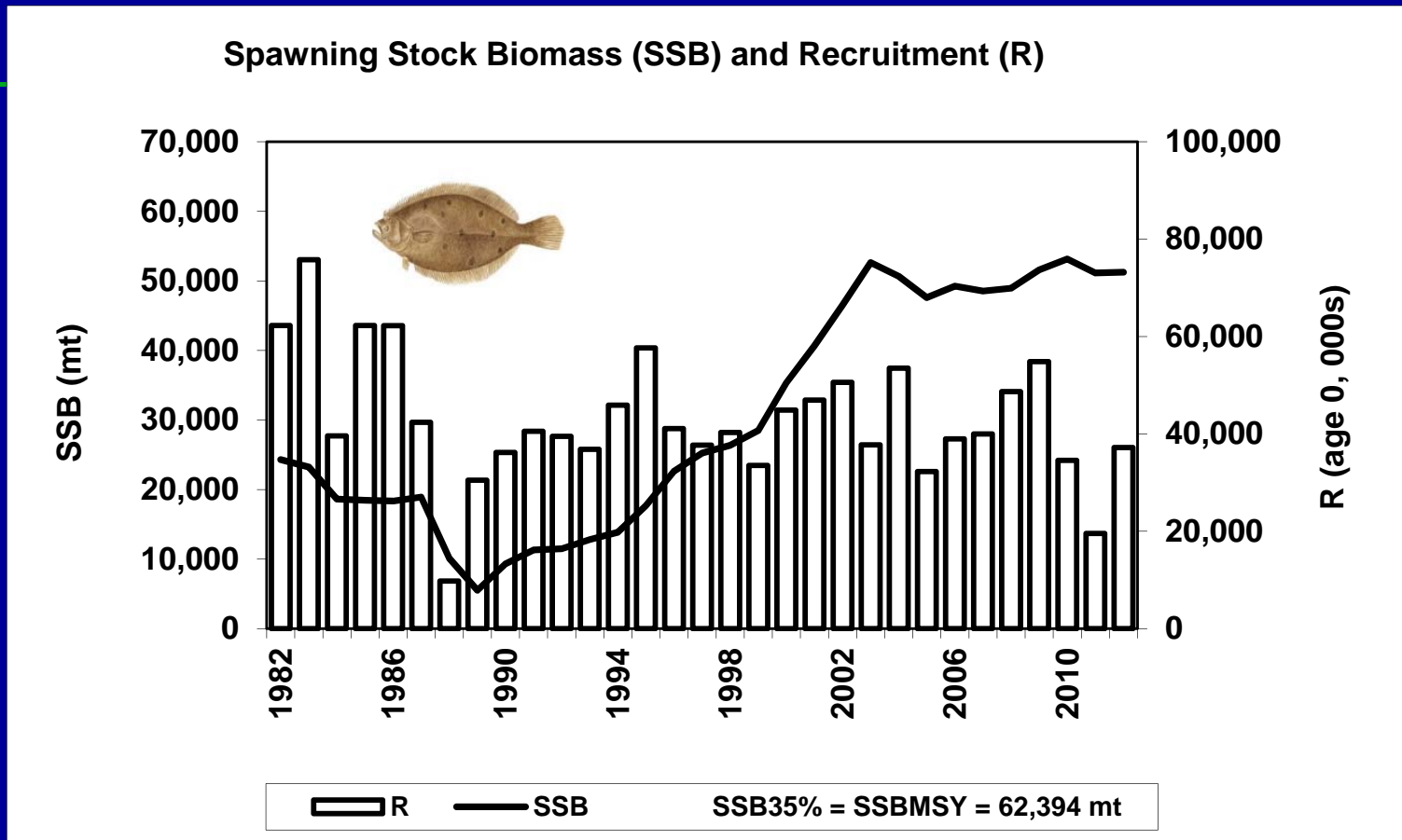
- $F_{MSY} = F_{35\%}$ (as F_{msy} proxy) = 0.309
- $SSB_{MSY} = SSB_{35\%}$ (as SSB_{MSY} proxy) = 137.6 mil lb (62,394 mt)
- $MSST = \frac{1}{2} SSB_{MSY} = 68.78$ mil lb (31,197) mt)

Fishing Mortality



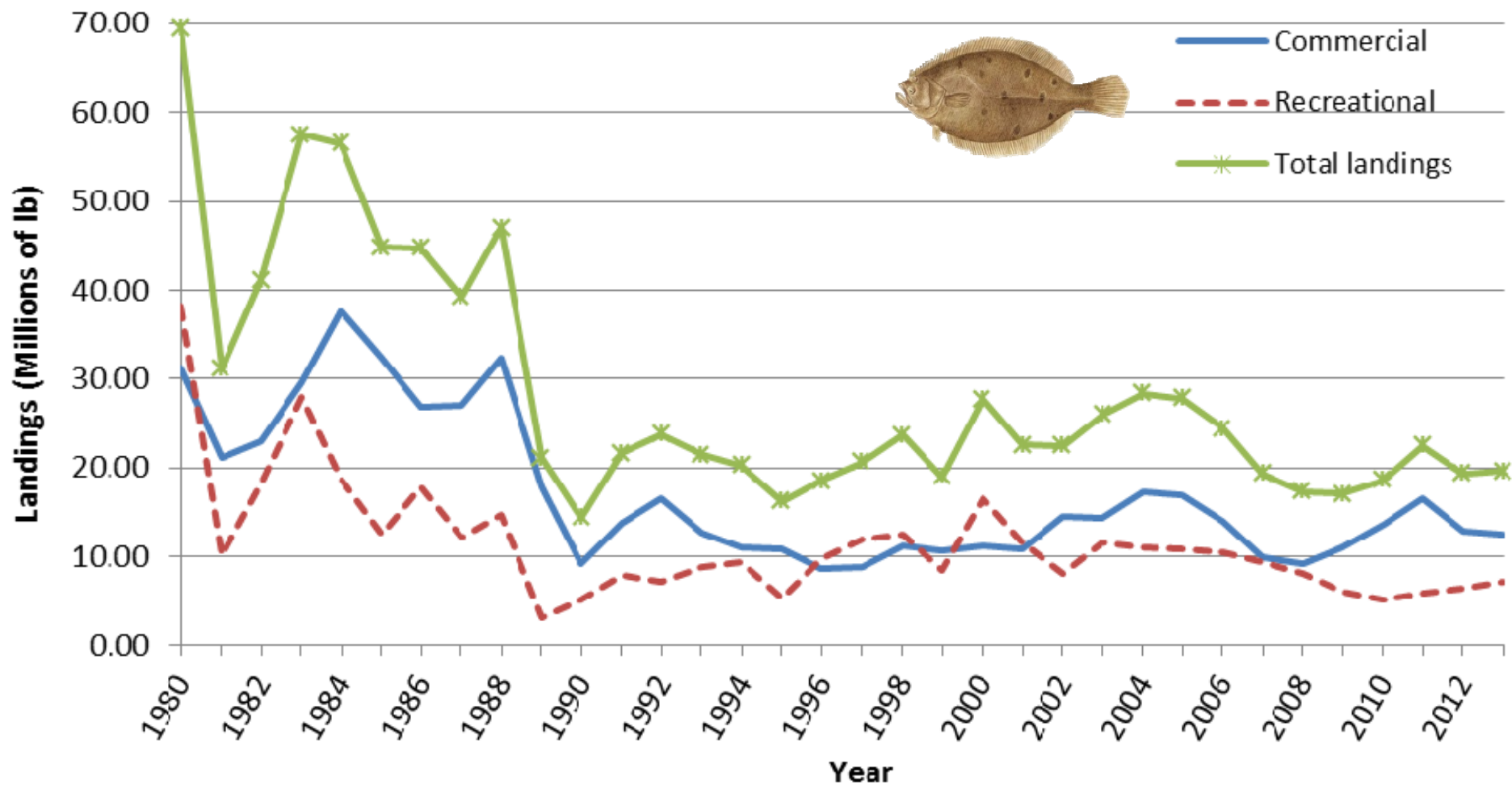
2012 $F = 0.285$; below $F_{35\%} = F_{MSYproxy} = 0.309$

Biomass



2012 SSB = 113 mil lb (51,238 mt); ~82% of
 $SSB_{MSY} = 137.6 \text{ mil lb (62,394 mt)}$

Landings



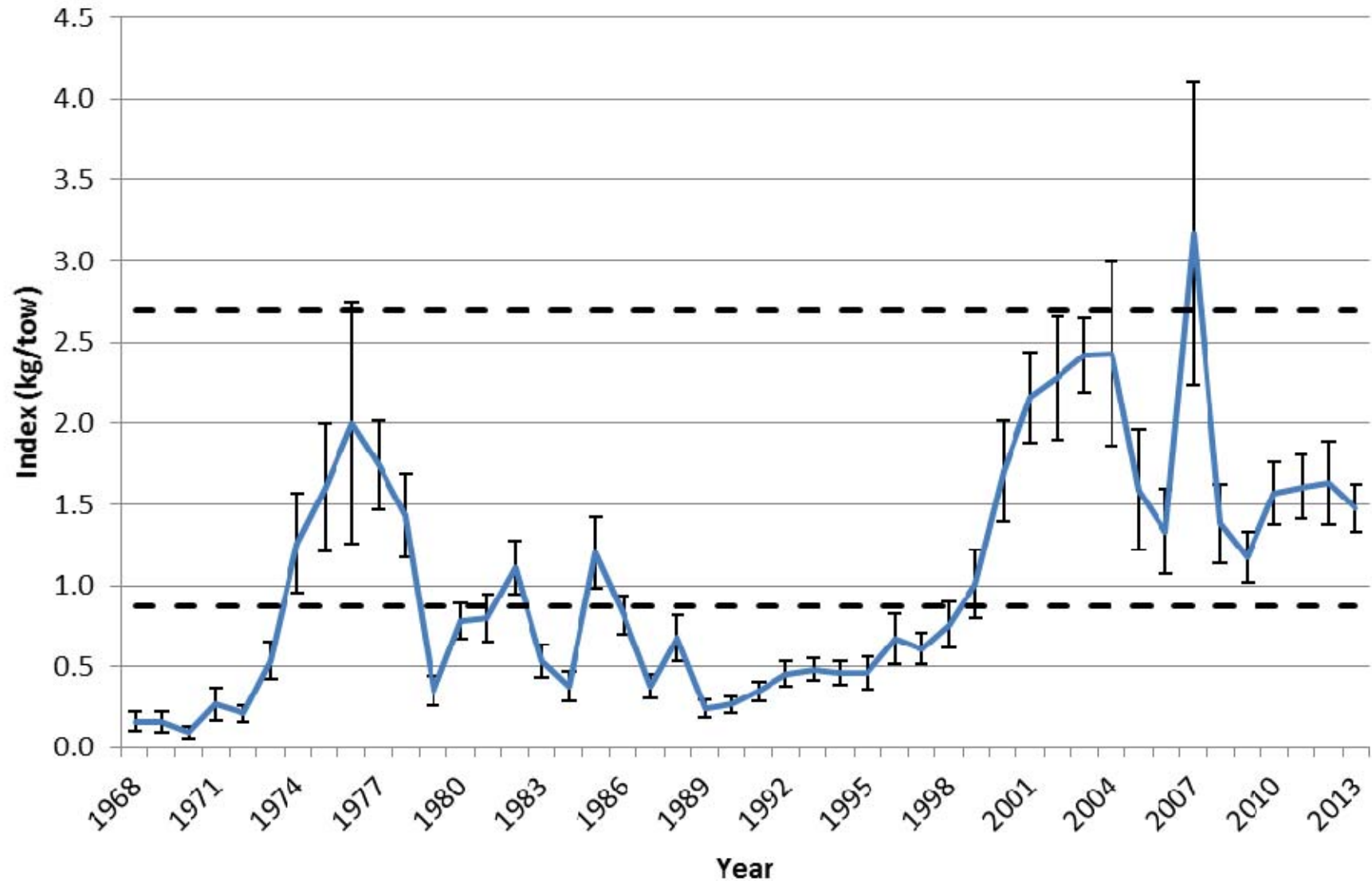
2013 Fishery Performance

- Commercial landings = 12.49 mil lb
(5,665 mt)
~6% over commercial quota
- Recreational landings = 7.02 mil lb
(3,182 mt)
~8% under rec. harvest limit

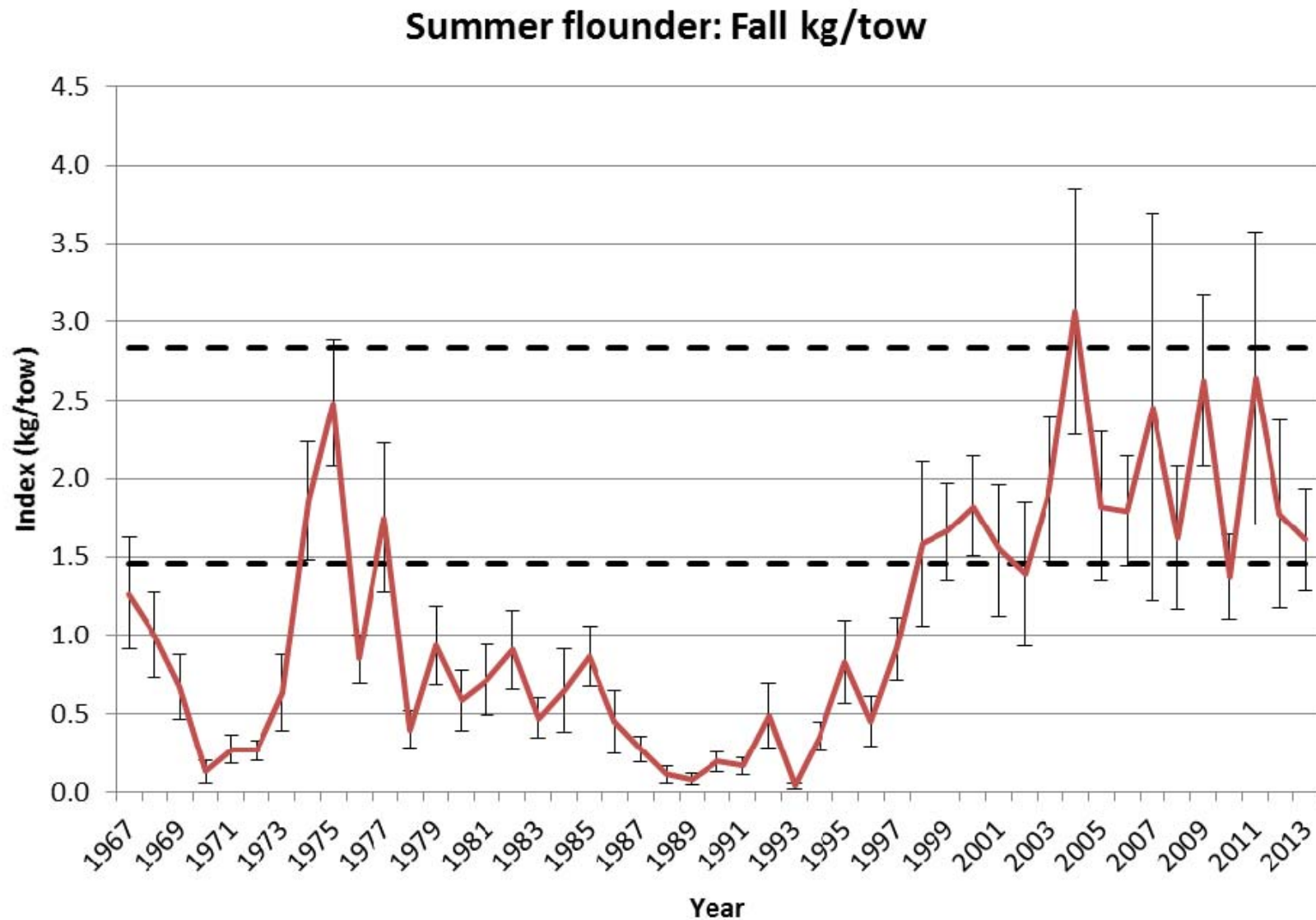


Data Update

Summer flounder: Spring kg/tow

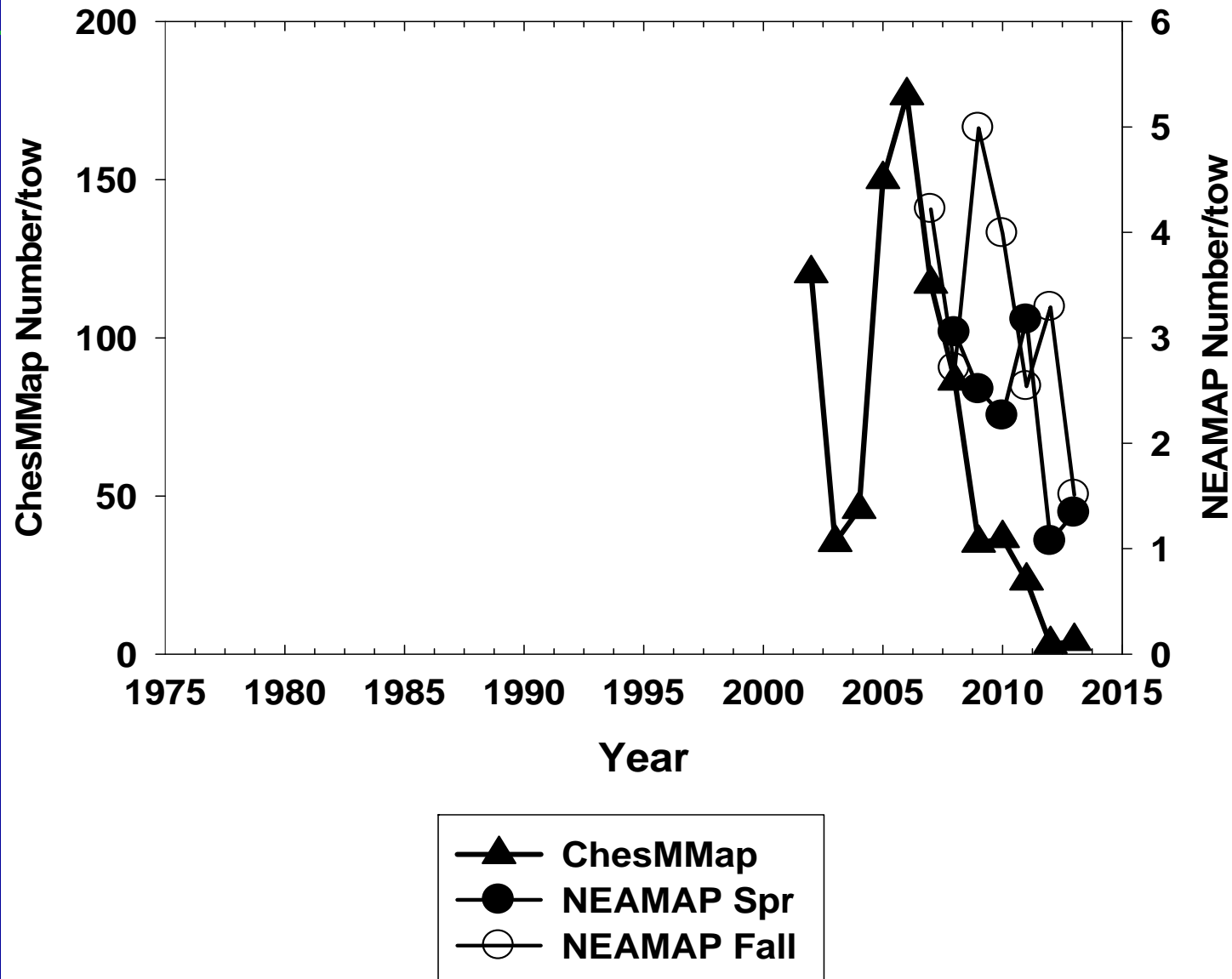


Data Update



Data Update

ChesMMap and NEAMAP Trawl Surveys



Regulatory Review

- Last year: multi-year specifications were set for 2014 and 2015
- 2014 ABC derived using: $SSB/SSB_{MSY} = 91\%$; $P^* = 0.360$; lognormal OFL distribution with $CV = 60\%$
- 2015 ABC derived using: $SSB/SSB_{MSY} = 95\%$; $P^* = 0.378$, lognormal OFL distribution with $CV = 60\%$



Fishery Performance Report

- Lack of confidence in MRIP estimates
 - Sense that recent effort reductions not captured by outdated effort surveys
 - New methodology should be implemented now
- Recreational effort shifts by state due to regional conservation equivalency regs.
- Concern about high size limits resulting in high fishing pressure on large females



Fishery Performance Report

- Closure of Oregon Inlet drastically affecting landings in NC
- Commercial effort shifts away from southern states due to management measures (TED requirements in NC)



Fishery Performance Report

- Research plan comments:
 - Research different hook types to reduce recreational discard mortality
 - Explore uses of smartphone applications/other technology for voluntary angler surveys



Staff Recommendation: No Change to Implemented Specifications

	2014	2015
ABC	21.94 mil lb (9,950 mt)	22.77 mil lb (10,329 mt)
Commercial ACL	12.87 mil lb (5,837 mt)	13.34 mil lb (6,049 mt)
Recreational ACL	9.07 mil lb (4,113 mt)	9.44 mil lb (4,280 mt)