



Scup

Advisory Panel Meeting

June 21, 2023



MID-ATLANTIC | FISHERY
MANAGEMENT
COUNCIL



Outline



- Stock status
- Review recent fishery performance (Fishery Information Document)
- Discussion points

Meeting objective

- Develop Fishery Performance Report



Stock Status

- Most recent complete assessment: management track assessment in July 2021
 - Data through 2019
 - 2020 data not included due to covid-related data gaps
- Data update in 2022
 - Landings through 2021 & federal trawl survey info through spring 2022
- Updated management track assessment in progress



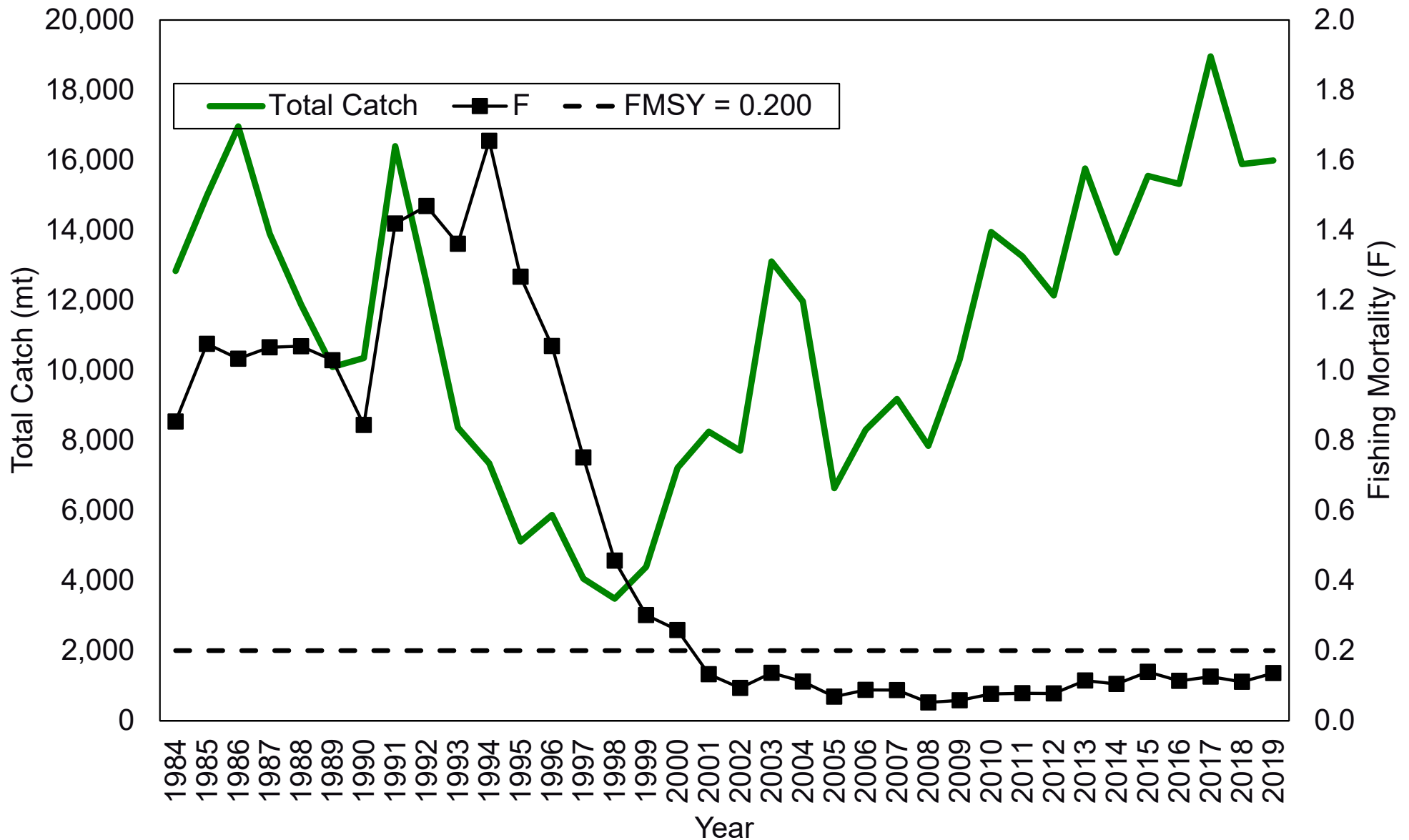
Stock Status

- Management track assessment peer review meeting June 26-28, 2023
 - Atlantic Mackerel, Longfin Squid, Bluefish, Scup, Summer Flounder
 - For scup, will include updated stock status information based on data through 2022, and will inform 2024-2025 catch limits
 - Results considered at July 24-26 SSC and July 27 Monitoring Committee meetings to inform August Council/Board decisions



Fishing Mortality

2021 Management Track Assessment

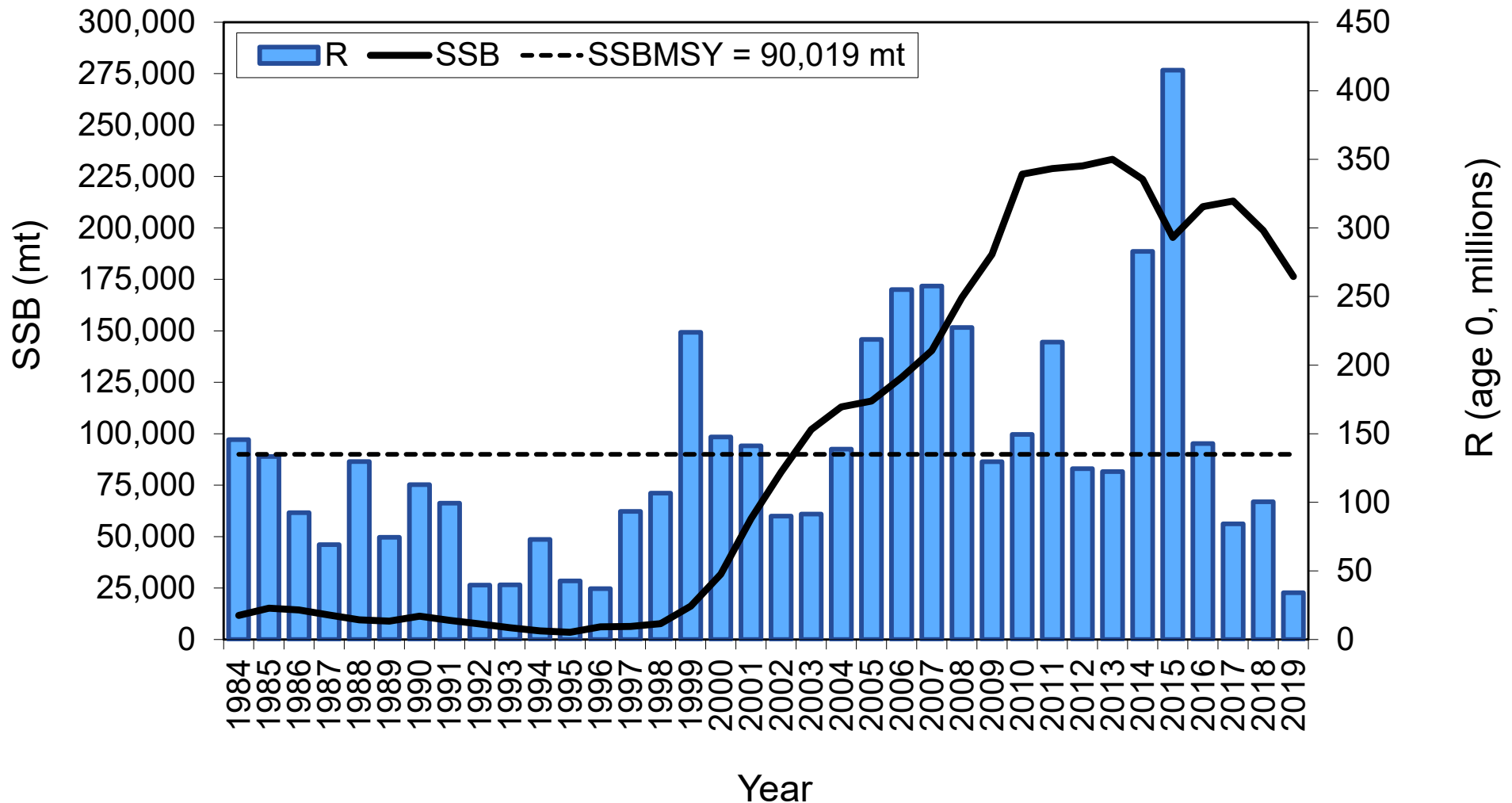


Biomass, Recruitment

2021 Management Track Assessment



Spawning Stock Biomass (SSB) and Recruitment (R)



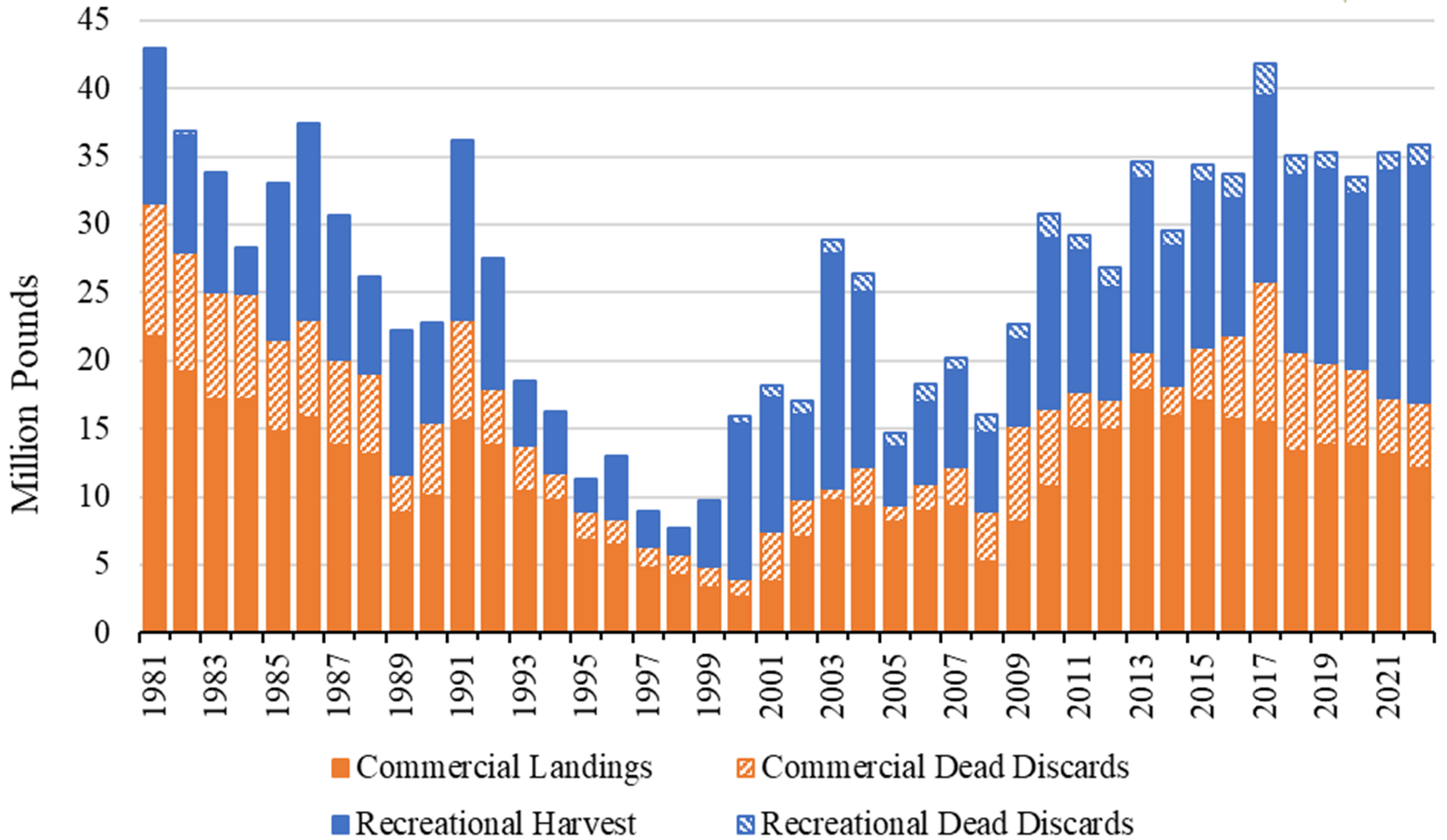
OFL and ABC Performance



Year	Total catch	OFL	OFL overage/underage	ABC	ABC overage/underage
2014	23.10	47.8	-52%	35.99	-36%
2015	25.85	47.8	-46%	33.77	-23%
2016	26.91	35.8	-25%	31.11	-14%
2017	32.20	32.09	0%	28.4	+13%
2018	26.84	45.05	-40%	39.14	-31%
2019	26.55	41.03	-35%	36.43	-27%
2020	33.50	41.17	-19%	35.77	-6%
2021	35.35	35.3	0%	34.81	+2%
2022	35.92	32.56	+10%	32.11	+12%
2023	--	30.09	--	29.67	--

Limits/catch values in millions of pounds
 Total catch calculated using old MRIP data through 2019

Total Catch



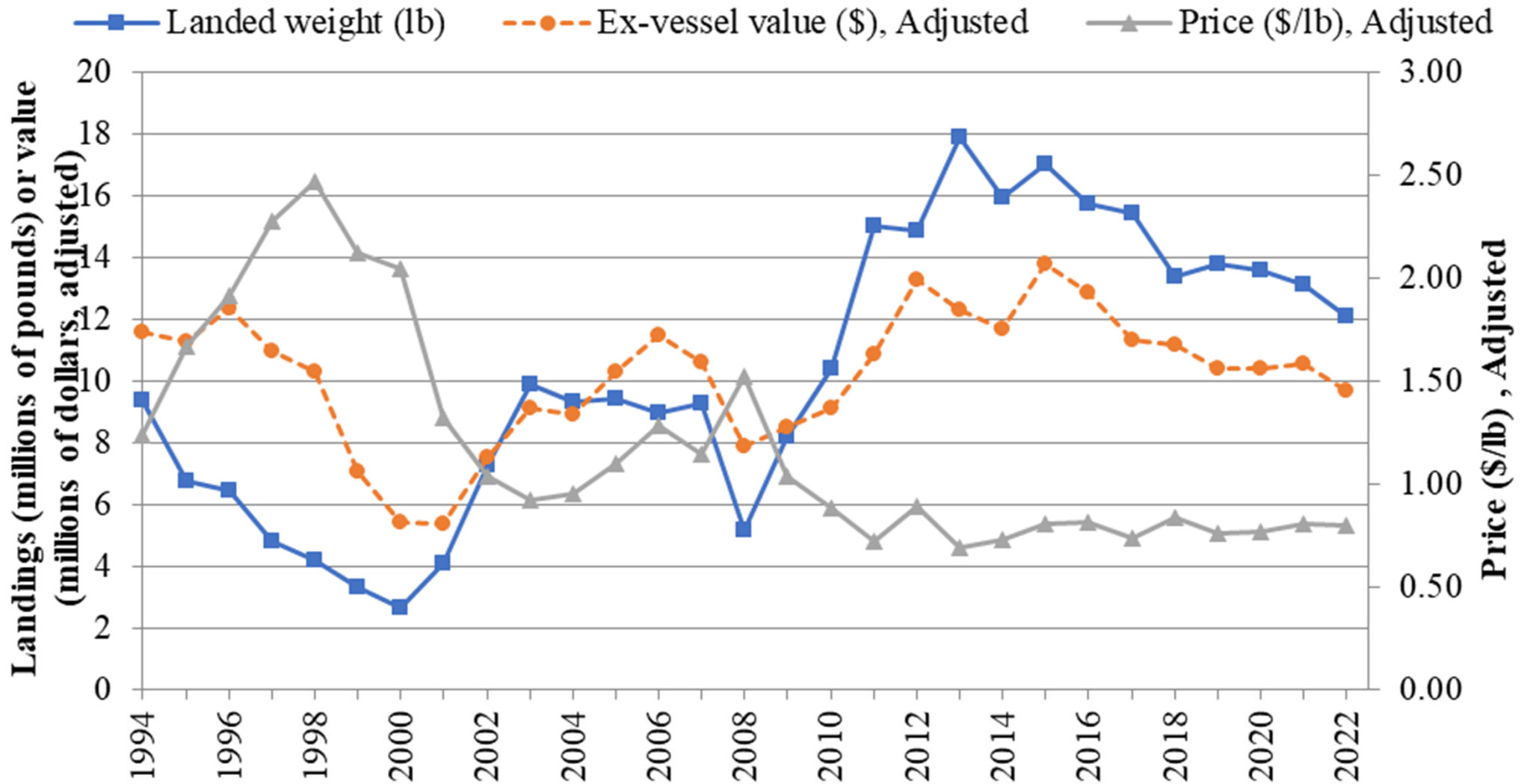
Total catch calculated using revised MRIP data through the timeseries

Commercial Fishery



Year	Com. landings	Com. quota	Quota overage/ underage	Com. dead catch	ACL	ACL overage/ underage
2018	13.37	23.98	-44%	20.63	30.53	-32%
2019	13.78	23.98	-43%	19.91	28.42	-30%
2020	13.58	22.23	-39%	19.34	27.9	-31%
2021	12.93	20.5	-37%	17.11	27.15	-37%
2022	12.12	20.38	-41%	16.91	25.05	-33%
2023	--	14.01	--	--	19.29	--

Commercial Landings, Price, Value



Quota Periods

Quota Period	Dates 2018-2021	Dates 1997-2017	Allocation	Possession limit
Winter I	Jan–Apr	Jan–Apr	45.11%	50,000 pounds
Summer	May–Sept	May–Oct	38.95%	State-specific
Winter II	Oct–Dec	Nov– Dec	15.94%	12,000 pounds*



Summer Quota Allocation



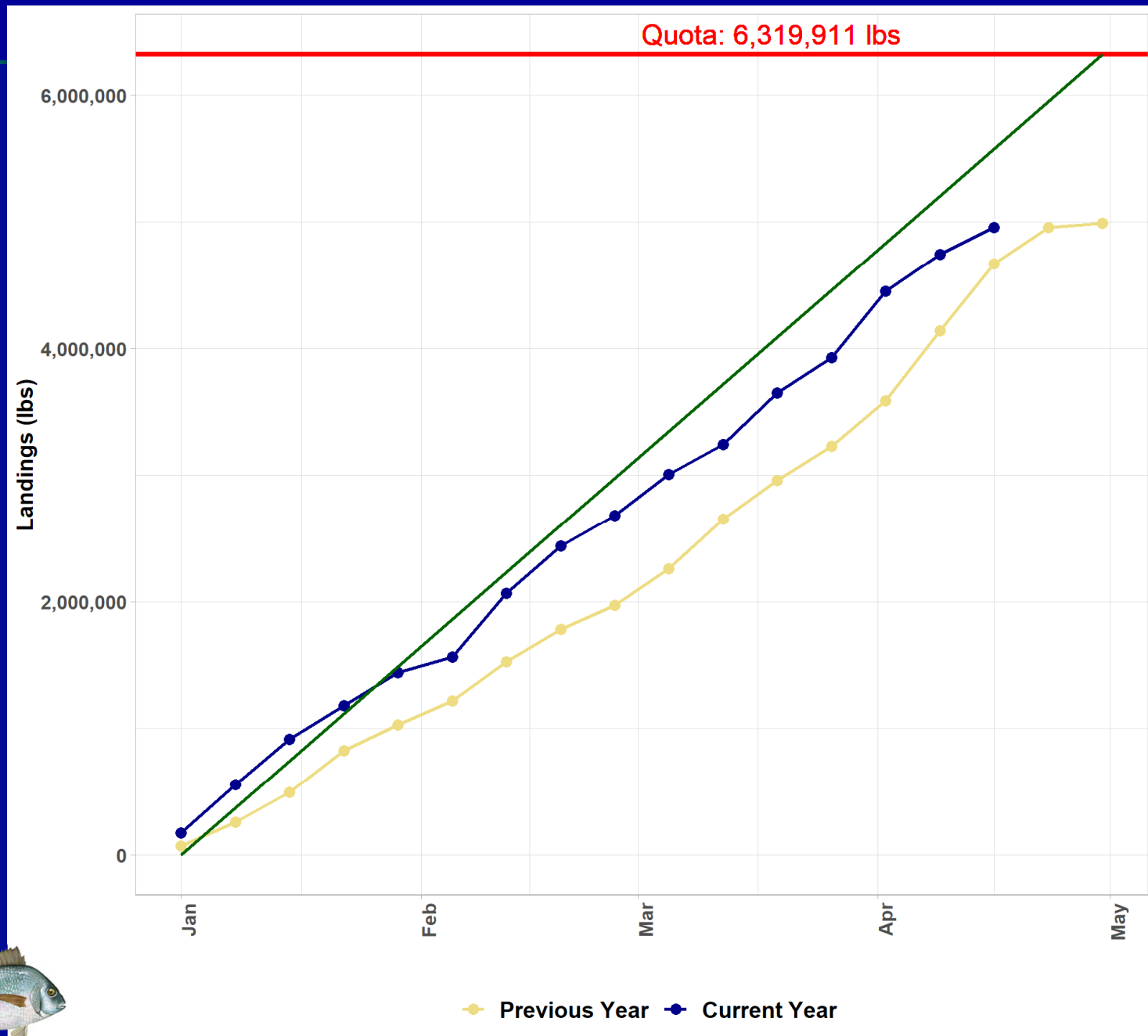
State	Share of summer quota
Maine	0.121%
Massachusetts	21.587%
Rhode Island	56.195%
Connecticut	3.154%
New York	15.825%
New Jersey	2.917%
Maryland	0.012%
Virginia	0.1650%
North Carolina	0.025%
Total	100%

Other Commercial Measures

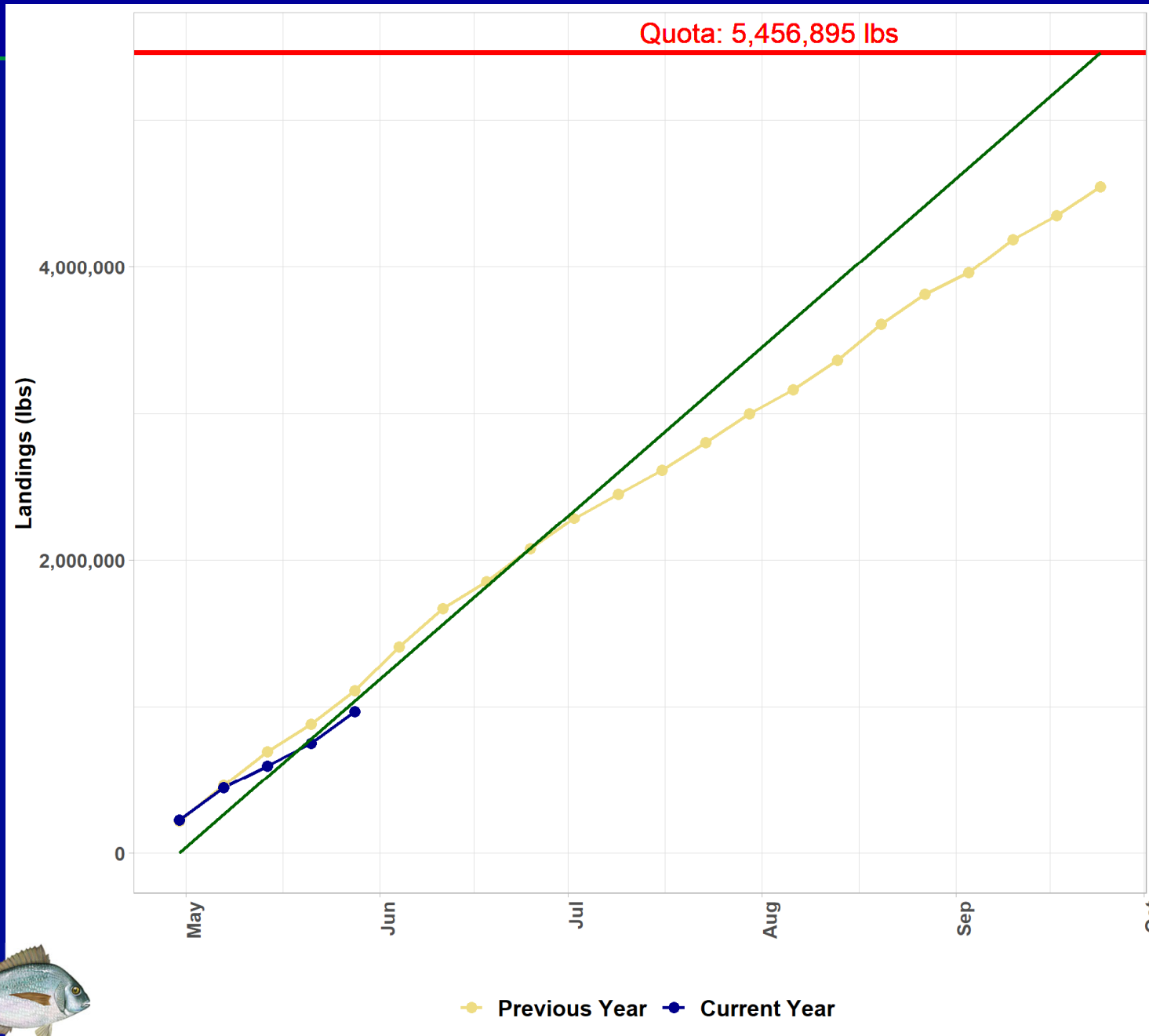


- Min. size: 9" total length
- Min. trawl mesh size of 5.0" diamond if retaining more than
 - 1,000 lbs. from Oct. 1 – April 14
 - 2,000 lbs. from April 15 – June 15
 - 200 lbs. from June 16 – Sept. 30
- Pots/traps
 - Escape vent and degradable hinges
 - 3.1" in diameter (circular), 2.25" x 2.25" (square), or equivalent rectangular vent
- 2 Gear Restricted Areas (GRA)

2023 Quota/Landings: Winter Period



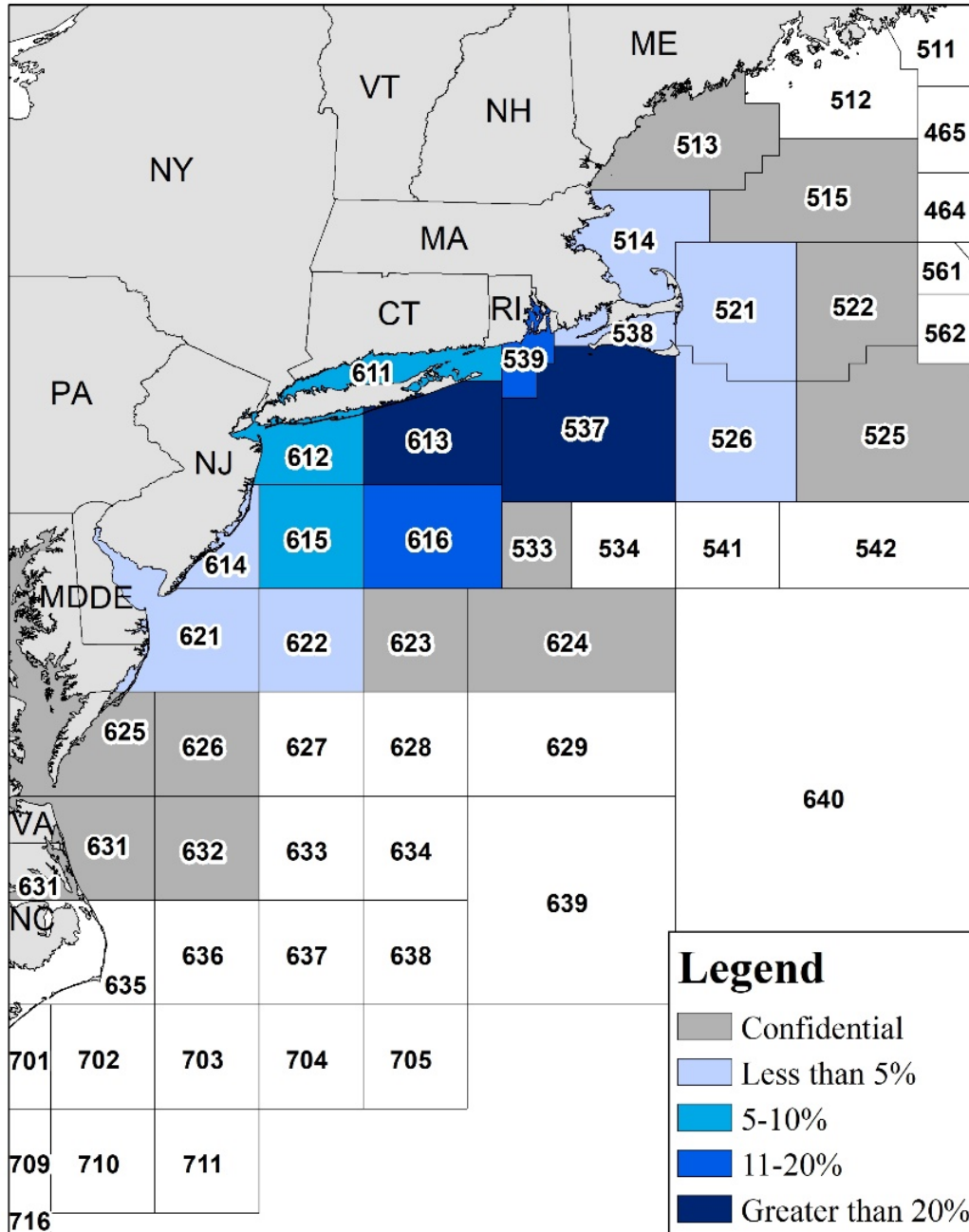
2023 Quota/Landings: Summer Period



Commercial Catch



2022 Commercial Scup Catch - VTRs



2022 federal VTR data

Stat. area	% of 2022 commercial scup catch	Num. of trips
613	24%	1,377
537	20%	1,066
616	16%	346
539	10%	2,108
611	6%	1,139

Top 5 Ports in 2022



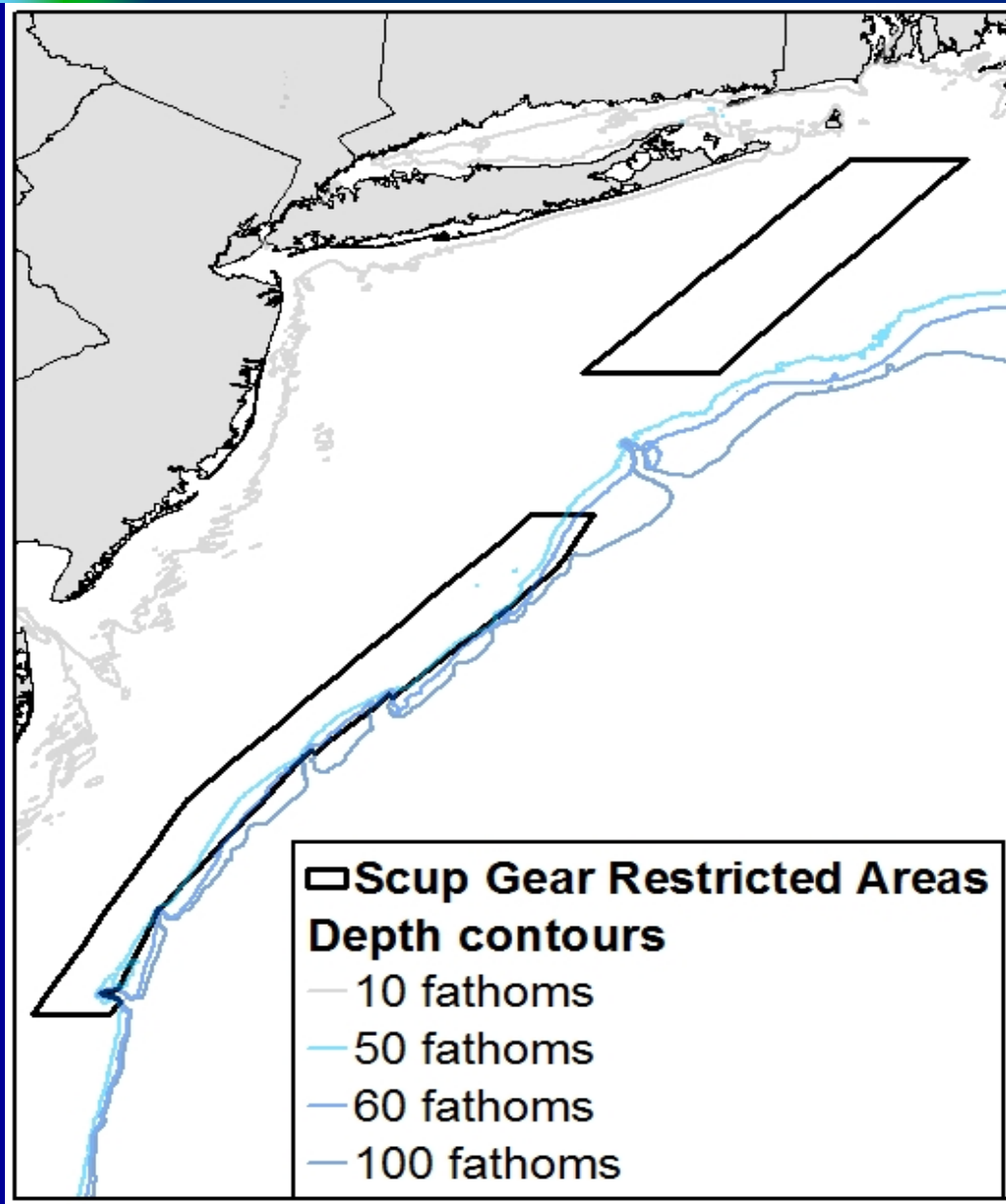
Port	Scup landings (lbs.)	% of total landings	Number of vessels
POINT JUDITH, RI	3,203,618	26%	125
MONTAUK, NY	2,802,648	23%	79
PT. PLEASANT, NJ	1,397,265	12%	30
CAPE MAY, NJ	964,646	8%	24
NEW BEDFORD, MA	712,476	6%	48

Dealers By State in 2022

State	MA	RI	CT	NY	NJ	DE	MD	VA	NC
Number of Dealers	31	30	13	45	15	3	5	5	8



Gear Restricted Areas



Effective dates:

Northern GRA:
Nov 1 – Dec 31

Southern GRA:
Jan 1 – Mar 15



Commercial Discards/GRA Analysis

- Staff is working to analyze commercial discards and current GRAs
- Timeline:
 - Present results/request feedback from SSC, MC, and Council/Board during this specification cycle
- Preliminary results:
 - Discards have decreased compared to record high in 2017 but are above average since GRAs were initially implemented



Federal Rec. Measures – 2023

Possession
limit

- 40 scup*

Size limit

- 10 inches total length

Season

- May 1-December 31*

** Measures modified in 2023*



2023 Recreational measures by state



State	Minimum Size (inches)	Possession Limit	Open Season
MA (private vessel)	10.5	30 fish	May 1 – Dec. 31
MA (shore)	9.5		
MA (party/charter)	10.5	40 fish	May 1 – June 30
		30 fish	July 1 – Dec. 31
RI (private vessel)	10.5	30 fish	May 1 – Dec. 31
RI (shore)	9.5		
RI (party/charter)	10.5	30 fish	May 1 – Aug. 31; Nov. 1 – Dec. 31
		40 fish	Sept. 1 – Oct. 31
CT (private vessel)	10.5	30 fish	May 1 – Dec. 31
CT (shore)	9.5		
CT (Authorized For-Hire Monitoring Program Vessels)	10.5	30 fish	May 1 – Aug. 31; Nov. 1 – Dec. 31
		40 fish	Sept. 1 – Oct. 31

2023 Recreational measures by state



State	Minimum Size (inches)	Possession Limit	Open Season
NY (private vessel)	10.5	30 fish	May 1 – Dec. 31
NY (shore)	9.5		
NY (party/charter)	10.5	30 fish	May 1 – Aug. 31; Nov. 1 – Dec. 31
		40 fish	Sept. 1 – Oct. 31
NJ	10	30 fish	Aug. 1 – Dec. 31
DE	9	40 fish	Jan. 1 – Dec. 31
MD		30 fish	
VA		30 fish	
NC, North of Cape Hatteras (N of 35° 15'N)		40 fish	

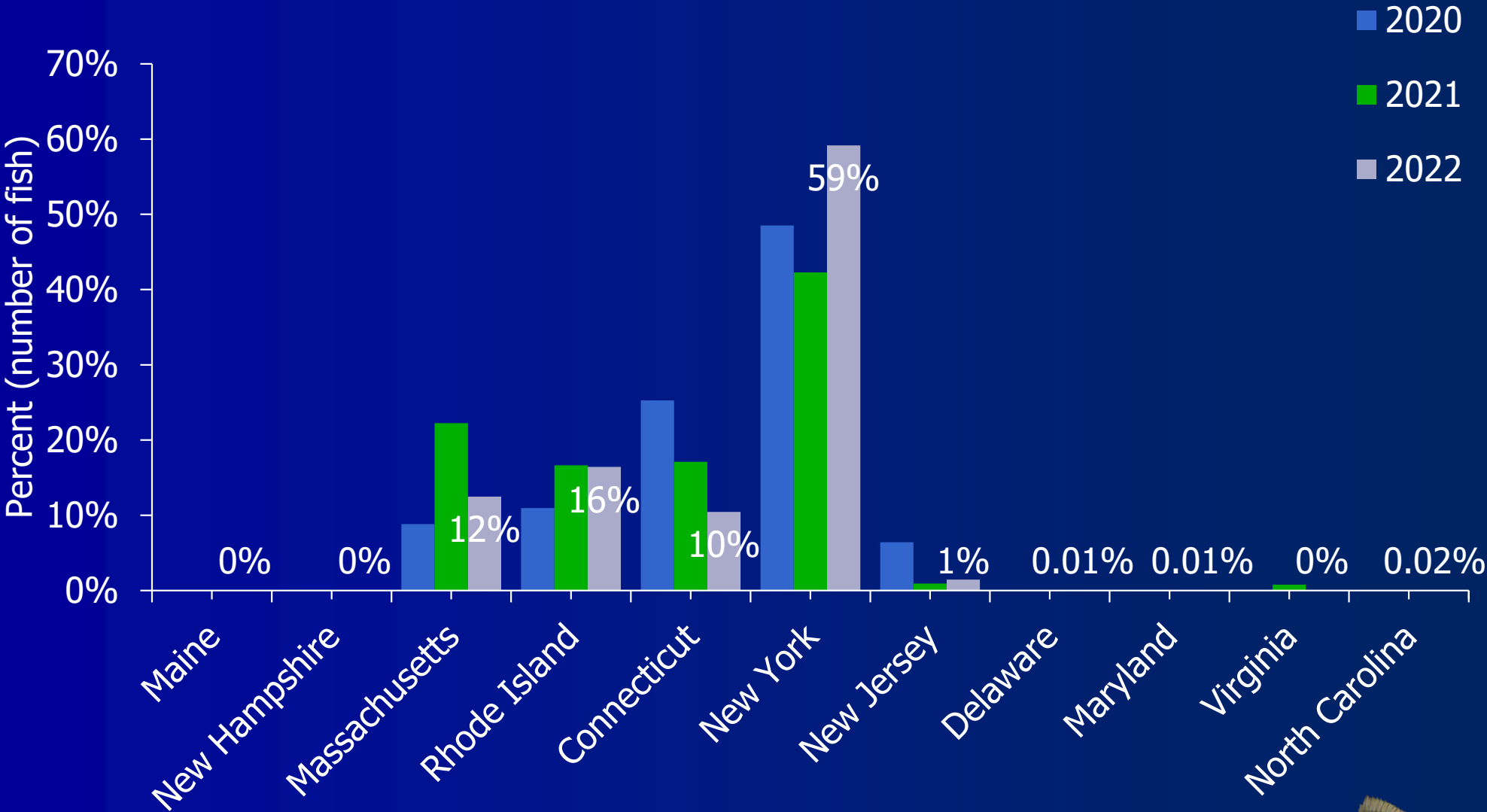
Recreational Fishery



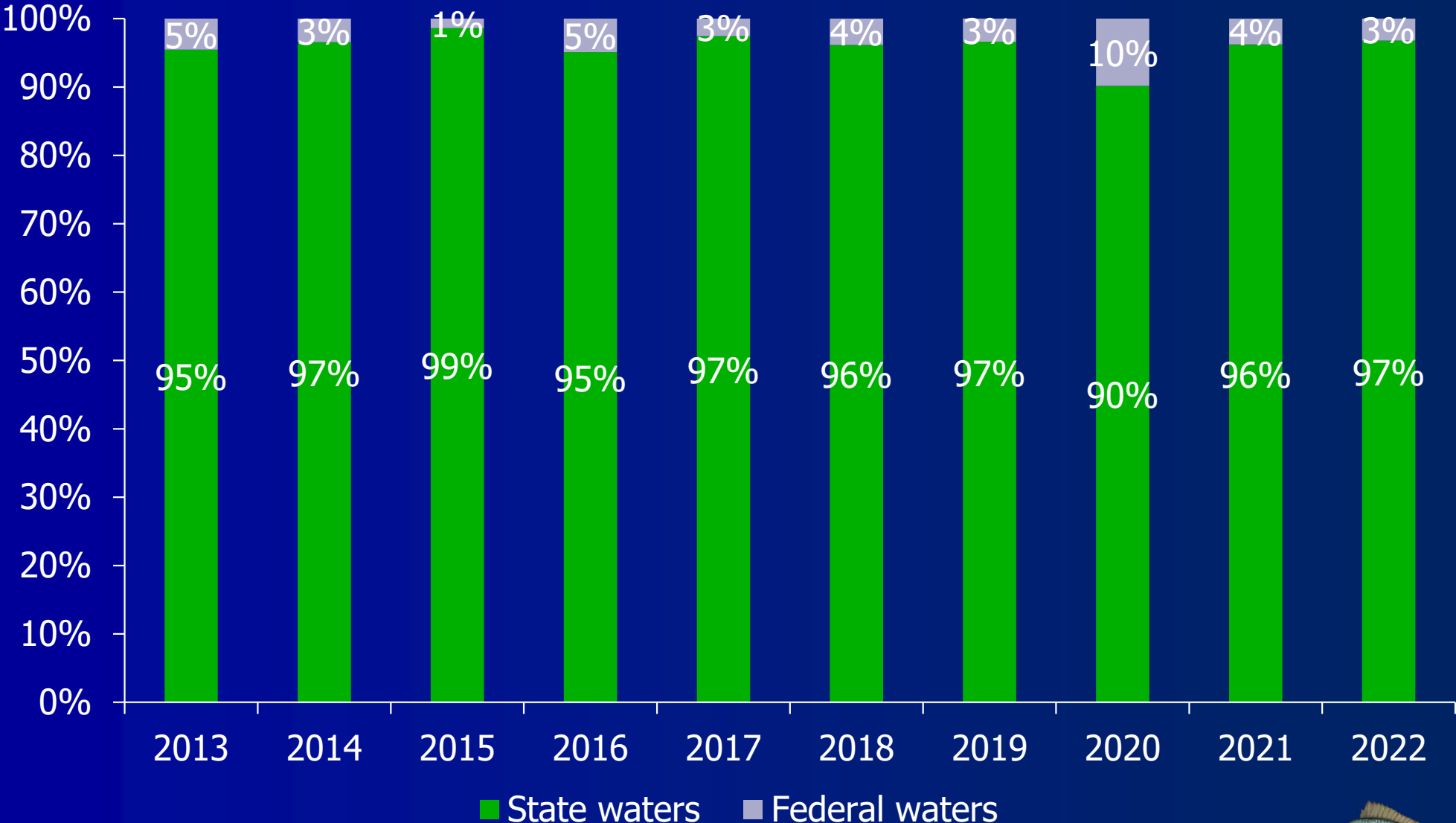
Year	MRIP data used	Rec. landings	RHL	RHL over/under	Rec. catch	ACL	ACL over/under
2018	Old MRIP (pre- revision)	5.61	7.37	-24%	7.03	8.61	-18%
2019	Old MRIP (provided by NEFSC)	5.41	7.37	-27%	6.64	8.01	-17%
2020	New MRIP (post-revision)	12.91	6.51	+98%	14.10	7.87	+79%
2021		16.62	6.07	+174%	18.06	7.66	+136%
2022		17.36	6.08	+186%	18.99	7.06	+169%
2023		--	9.27	--	--	10.39	--

2020 harvest estimated using imputation methods incorporating 2018-2019 proxy data

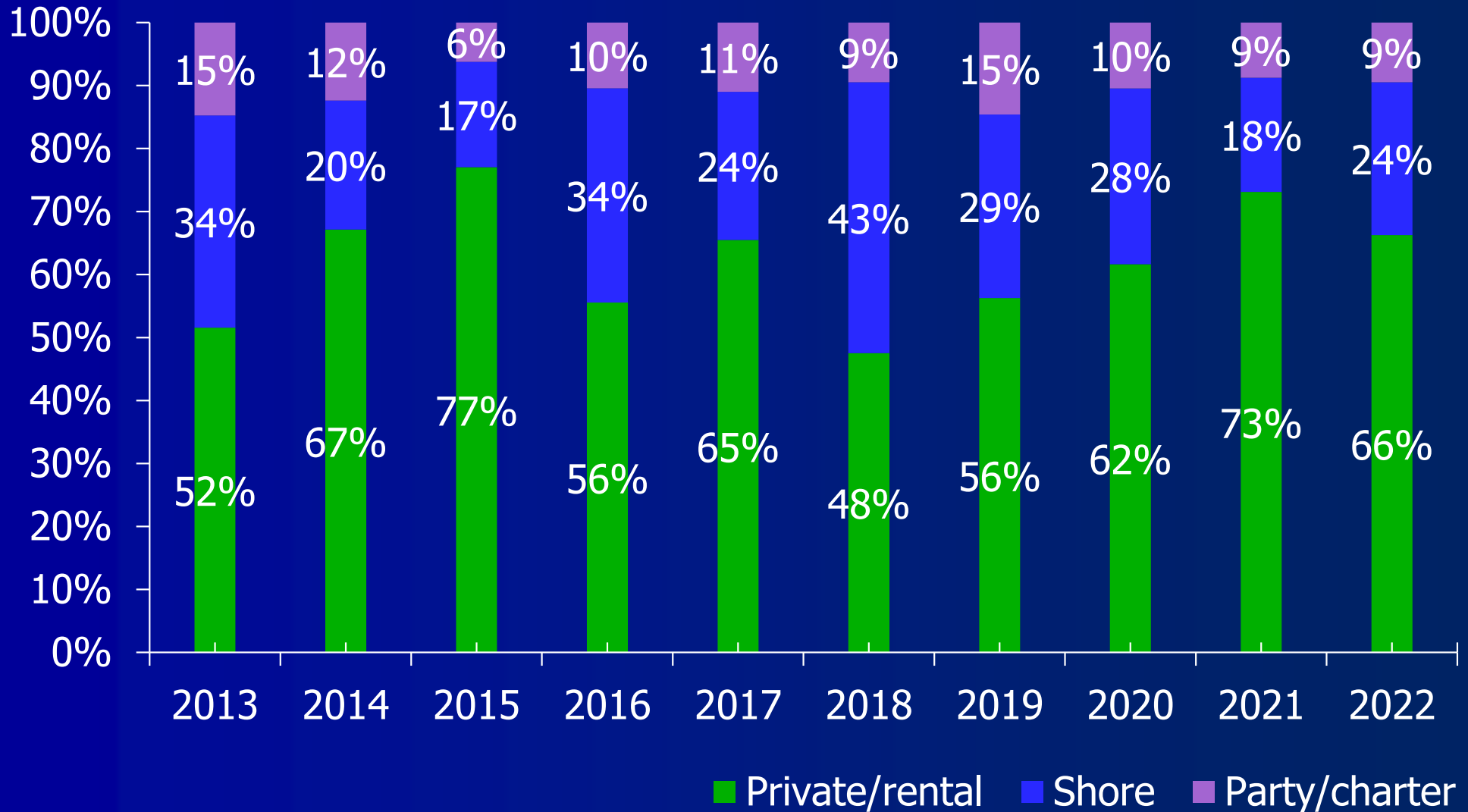
Recreational Landings by State as % of Total



State vs. Federal Waters Harvest



Harvest By Mode



MAFMC 2020-2024 Research Priorities

SCUP	Corresponding Theme(s)
SHORT-TERM/SMALLER SCALE	
85. Explore the relationship between scup market trends, regulatory changes, and commercial landings and discards.	B, C, F
86. Evaluate the spatial and temporal overlap of scup and squid to better understand and characterize scup discard patterns.	A, B, F
87. Characterize the pattern of selectivity for older ages of scup in both surveys and fisheries.	A
LONG-TERM/LARGER SCALE	
88. Continue to evaluate the role and relative importance of implemented management strategies (i.e., gear restricted areas, increased minimum mesh size, and minimizing scup and squid fishery interactions) and expand analysis to consider the long-term climate variability to the increases in stock abundance and high recruitment events since 2000.	A, B, D, F, G
89. Characterize the current scup market and explore the development of new markets.	C

MAFMC will be developing new 5-year research priorities next year



Discussion Questions

- **What factors influenced recent catch and landings?**
 - Markets/economy?
 - Environment?
 - Fishery regulations?
 - Other factors?
- **What other issues or concerns do you want to highlight?**
- **What research recommendations do you have for scup?**
- **What recommendations do you have for scup regulations in 2024?**

